

ZURICHCONVENTIONCENTER.COM



ZURICH
CONVENTION
CENTER

A VIEW TO
UNIQUE MEMORIES



ENDLESS POSSIBILITIES

GRAND OPENING
MARCH 2021

SPECTACULAR PANORAMIC
LOCATION ON LAKE ZURICH

WONDERFUL COMBINATION OF
MODERN AND TRADITIONAL

RIGHT IN THE HEART
OF ZURICH

CLOSE TO ZURICH AIRPORT

OVER 15000 HOTEL ROOMS

IDEAL PUBLIC TRANSPORT
CONNECTIONS

GATEWAY TO THE SWISS ALPS

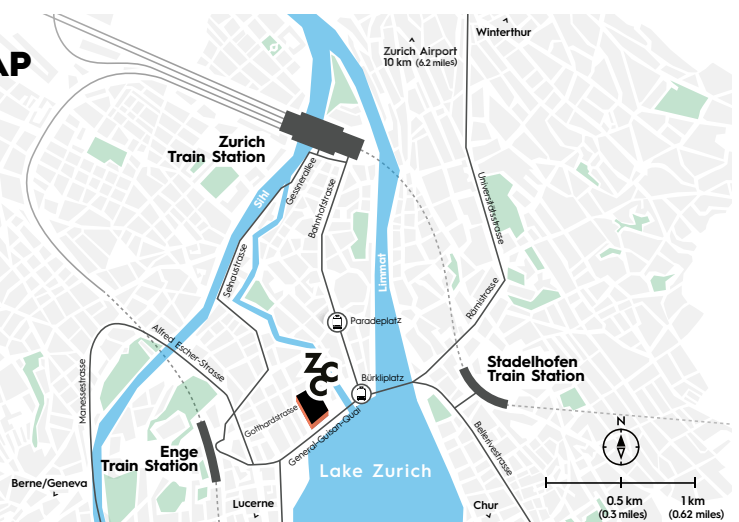
UNIQUE LOCATION

Together, the new Zurich Convention Center and the historic Tonhalle complex create a **unique European venue** with endless possibilities for whatever event you are planning.

International specialist conventions with several thousand participants? Meetings in rooms with natural light and marvellous views? Corporate conferences with star guests on the big stage? Captivating product presentations on the breathtaking terrace with a panoramic restaurant? In the new Zurich Convention Center, truly anything is possible - and **carbon neutral** to boot.

After a three-year overhaul with an investment of CHF 174.4 million, the new, highly modern Zurich Convention Center and world-renowned Zurich Tonhalle are set to open **in March 2021**.

MAP





HIGHLY MODERN & FLEXIBLE

AS DIVERSE AS THE EVENTS

5300m² of event space, 4500 seats and more than 20 rooms and foyers: The new Zurich Convention Center is the largest venue of its kind in the center of Zurich. It sets new standards in terms of space, flexibility and individuality.

On request, almost all spaces and rooms can be made smaller or bigger, be partitioned or extended. All rooms are equipped with state-of-the-art technology. By subdividing the building and creating different event spaces, several events and breakout sessions can be held simultaneously.

The structural and operational symbiosis with the Tonhalle opens up additional attractive possibilities. The Tonhalle is one of the largest concert halls for classical music in Zurich. Sit back and enjoy perfect acoustics from any seat. It is not for nothing that the Grosse Tonhalle is considered to be one of the best concert halls in the world.

Organisers can make use of our first-class in-house catering service, with over 80 years of experience. On request, we will design a customised catering concept for you, ensuring that your event is a feast for the senses.

Together, the new Zurich Convention Center, the historic Tonhalle complex, the new restaurant with its large terrace and the inviting bars with lounge areas will act as an **international magnet** for event guests, concert-goers, tourists and local residents.

SWITZERLAND'S NEWEST CONVENTION CENTER

**OVER 80 YEARS OF
MICE EXPERTISE**

**HISTORIC TONHALLE
COMPLEX**

**5300 M² OF MULTIFUNCTIONAL
EVENT SPACE**

**4 500 SEATS AND MORE
THAN 20 ROOMS**

**GREEN MEETINGS
(CARBON NEUTRAL)**

ARE YOU PLANNING AN EVENT?

Our experienced team of advisers would be happy to support and advise you in planning and running your event. We would love to hear from you:

CONSULTING@ZURICHCONVENTIONCENTER.COM

T. +41 44 206 36 20

Seating / Number of people

FUNCTION ROOMS & CAPACITIES



Function room	space (m ²)	height (m)	floor	Theatre	Classroom	U-Shape	Banquet	Cocktail
Kongresssaal	865	~11.6	parquet	1141	593		640	900
Kongresssaal Gallery			parquet	540				
Kongresssaal with Gallery			parquet	1681				
Kongresssaal with Foyer	1415		parquet	1627			1040	1500
Kongresssaal with Gallery and Foyer				2000				
Kongressfoyer	550	~8.00	parquet	390			350	450
Kongressfoyer Galerie	354	3.95	parquet	145				
Kongressvestibül	953	4.15	terrazzo	859				1525
Gartensaal 1 A-C	519	4.25	terrazzo	790	378		410	1000
Gartensaal 1 A-B	370			518	249	85	280	800
Gartensaal 1 B-C	342			300	234	68	260	300
Gartensaal 1 A	174			200	96	48	140	400
Gartensaal 1 B	196			200	96	48	140	300
Gartensaal 1 C	146			150	64	48	110	300
Gartensaal 2	338	4.25	terrazzo	473	258	74	240	250
Gartensaal-Foyer	494	~5.00	terrazzo				390	520
Gartensaal 1 with Foyer	1013						790	1916
Gartensaal 2 with Foyer	832						670	916
Gartensaal 1+2 with Foyer	1351						1070	1916
Seezimmer 1	174		terrazzo	224	70	120	160	300
Seezimmer 1A	58			50	27	21	30	50
Seezimmer 1B	55			50	27	22	30	50
Seezimmer 1C	56			54	27	20	30	50
Seezimmer 2	115		parquet	50	43	28	50	50
Seezimmer 3	85		parquet	50	49	27	50	50
Seezimmer 4	60		parquet	60	24	20	40	50
Seezimmer 3+4	145			172	69	47	100	200
Seezimmer 5	15		parquet				10	
Seezimmer 6	63		parquet	69	26	34	40	40
Seezimmer 7	85		parquet	50	40	32	50	50
Seezimmer 8	42		parquet	34	13	16	20	30
Vortragssaal 1	132		parquet	100	74	39	100	100
Vortragssaal 2	167		parquet	200	110	45	120	200
Vereinssaal	235		parquet	200	123	52	150	200
Grosse Tonhalle			parquet	1430				
Kleine Tonhalle			parquet	633			180	200
Konzertfoyer	742		parquet				500	980
Konzertfoyer Galerie	190		parquet					
Lounge	62		parquet					25
Tonhallevestibül	647		terrazzo					655
Restaurant							170	
Restaurant terrace							140	

LEVEL 00



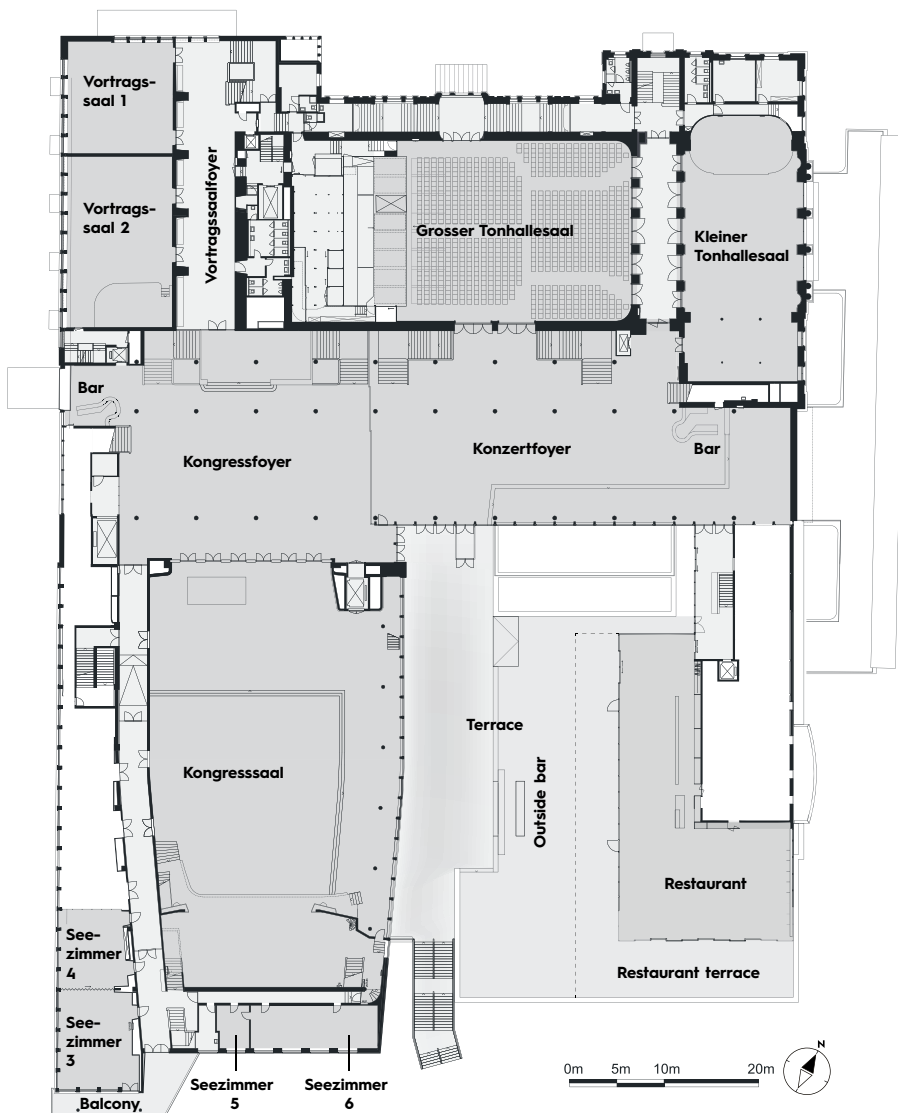
~~~~~ Lake Zurich ~~~~~

### Seating / Number of people

| Function room    | space (m <sup>2</sup> ) | height (m) | Theatre | Classroom | U-Shape | Banquet | Cocktail |
|------------------|-------------------------|------------|---------|-----------|---------|---------|----------|
| Kongressvestibül | 953                     | 4.15       | 859     |           |         |         | 1525     |
| Gartensaal 1 A-C | 519                     | 4.25       | 790     | 378       |         | 410     | 1000     |
| Gartensaal 2     | 338                     | 4.25       | 473     | 258       | 74      | 240     | 250      |
| Gartensaal-Foyer | 494                     | ~5.00      |         |           |         | 390     | 520      |
| Seezimmer 1 A-C  | 174                     |            | 224     | 70        | 120     | 160     | 300      |
| Seezimmer 2      | 115                     |            | 50      | 43        | 28      | 50      | 50       |
| Tonhallevestibül | 647                     |            |         |           |         |         | 655      |

~ = different room heights      all rooms with natural daylight

## LEVEL 01



~~~~~ Lake Zurich ~~~~~

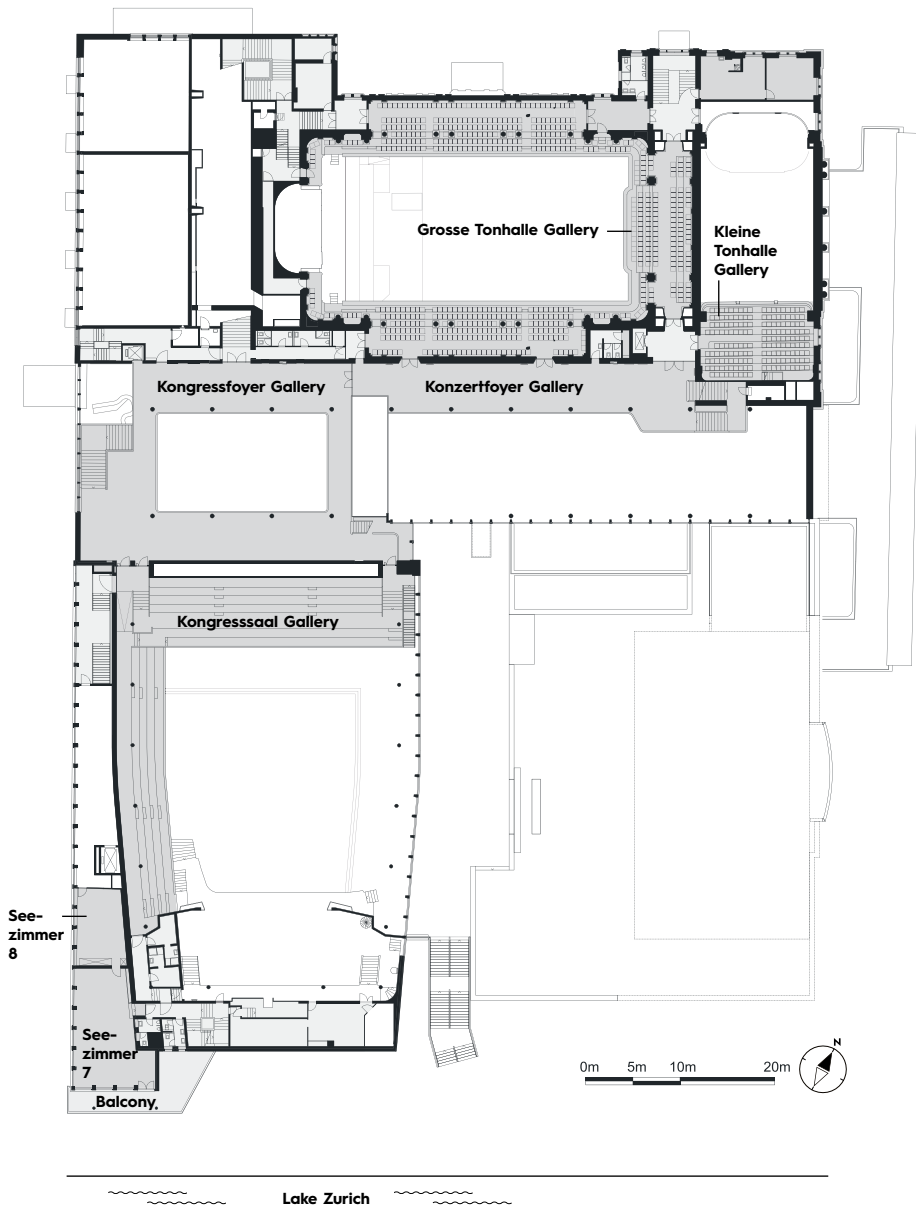
Seating / Number of people

| Function room | space (m ²) | height (m) | Seating / Number of people | | | | |
|---------------------|-------------------------|------------|----------------------------|-----------|---------|---------|----------|
| | | | Theatre | Classroom | U-Shape | Banquet | Cocktail |
| Kongresssaal | 865 | ~11.60 | 1141 | 593 | | 640 | 900 |
| Kongressfoyer | 550 | ~ 8.00 | | | | 350 | 450 |
| Seezimmer 3 | 85 | | 50 | 49 | 27 | 50 | 50 |
| Seezimmer 4 | 60 | | 60 | 24 | 20 | 50 | 50 |
| Seezimmer 5 | 15 | | | | | 10 | |
| Seezimmer 6 | 63 | | 69 | 26 | 34 | 40 | 40 |
| Vortragssaal 1 | 132 | | 100 | 74 | 39 | 100 | 100 |
| Vortragssaal 2 | 167 | | 200 | 110 | 45 | 120 | 200 |
| Grosser Tonhallsaal | | | 1430 | | | | |
| Kleiner Tonhallsaal | | | 633 | | | 180 | 200 |
| Konzertfoyer | 742 | | | | | 500 | 980 |
| Restaurant | | | | | | 170 | |
| Restaurant terrace | | | | | | 140 | |

~ = different room heights

all rooms with natural daylight

LEVEL 02



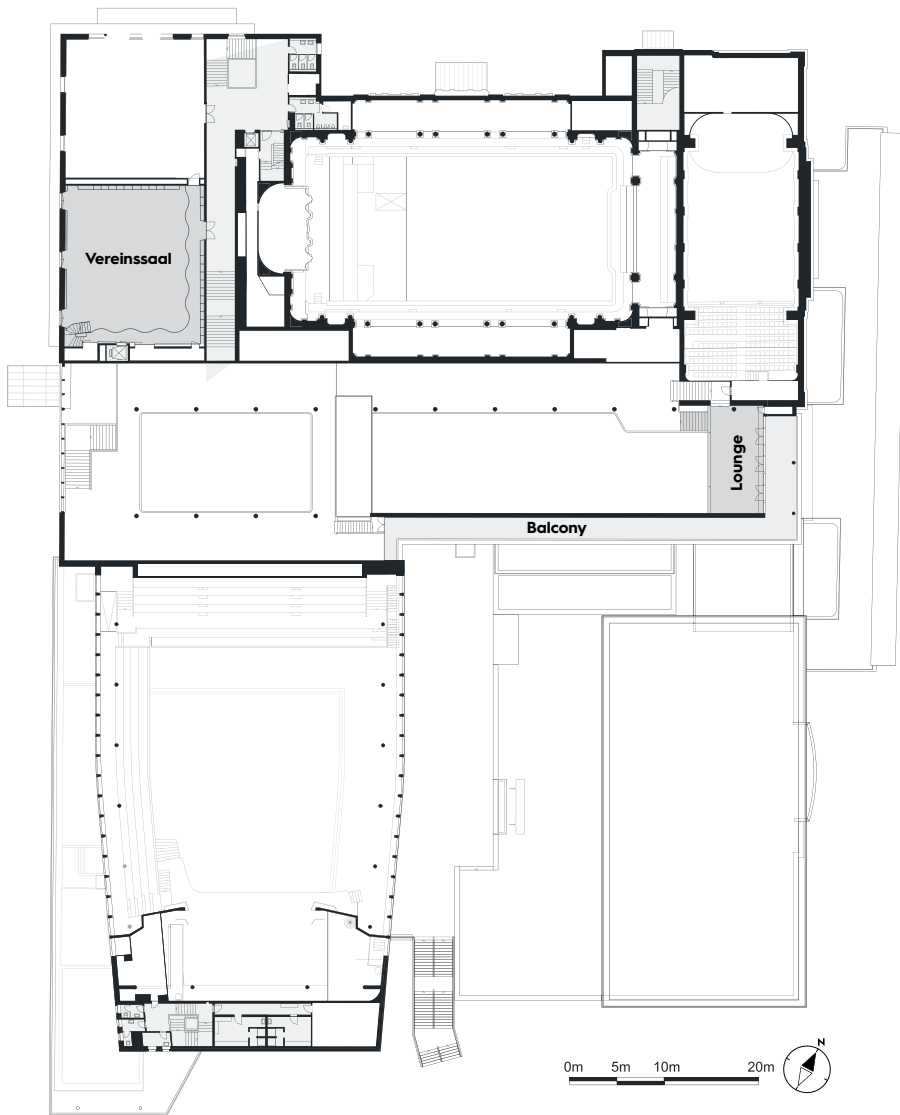
Seating / Number of people

| Function room | space (m ²) | height (m) | Seating / Number of people | | | | |
|-------------------------|-------------------------|------------|----------------------------|-----------|---------|---------|----------|
| | | | Theatre | Classroom | U-Shape | Banquet | Cocktail |
| Kongresssaal Gallery | 360 | | 540 | | | | |
| Kongressfoyer Gallery | 354 | 3.95 | 145 | | | | |
| Seezimmer 7 | 85 | | 50 | 40 | 32 | 50 | 50 |
| Seezimmer 8 | 42 | | 34 | 13 | 16 | 20 | 30 |
| Grosse Tonhalle Gallery | | | | | | | |
| Kleine Tonhalle Gallery | 92 | | | | | | |
| Konzertfoyer Gallery | 190 | | | | | | |

~ = different room heights

all rooms with natural daylight

LEVEL 03



~~~~~ Lake Zurich ~~~~~

### Seating / Number of people

| Function room | space (m <sup>2</sup> ) | height (m) | Seating / Number of people |           |         |         |          |
|---------------|-------------------------|------------|----------------------------|-----------|---------|---------|----------|
|               |                         |            | Theatre                    | Classroom | U-Shape | Banquet | Cocktail |
| Vereinssaal   | 235                     |            | 200                        | 123       | 52      | 150     | 200      |
| Lounge        | 62                      |            |                            |           |         |         | 25       |

~ = different room heights

all rooms with natural daylight





## INTERNATIONAL STAGE

The Zurich Convention Center has already welcomed numerous global stars, from jazz legends Louis Armstrong, Duke Ellington, Benny Goodman and Ella Fitzgerald to entertainers Josephine Baker, Sammy Davis Jr. and Harry Belafonte and rock and pop giants Ray Charles, Tina Turner, Deep Purple, Udo Jürgens and Patricia Kaas. We have also had the honour of welcoming Nobel Laureates in Literature, US presidents, federal councillors, business leaders and personalities such as the Dalai Lama into the iconic building, and the award ceremony for the world Footballer of the Year has already been held here.

## LARGE RANGE OF HOTELS

Almost all hotels in Zurich can be reached very easily from the Zurich Convention Center, thanks to its central location and excellent public transport connections. In Zurich and the surrounding region, more than 15000 hotel and guest rooms are available, over 1000 of which are within walking distance.



## CONNECTED TO THE WORLD

Located in the heart of Europe, Zurich is ideally connected to the rest of the world. 60 direct flights to over 170 destinations around the globe lead to the cosmopolitan city. It takes just 20 minutes to travel from Zurich Airport to the Zurich Convention Center.

Picture credits: Page 1: Zurich Tourism, Gettyimages / Page 2: Zurich Tourism / Page 9: Keystone, Swiss International Air Lines

## CONTACT US

**Zurich Convention Center Ltd.**  
**Kongresshaus Zürich AG**  
 Gotthardstrasse 5  
 CH-8002 Zurich

[CONSULTING@ZURICHCONVENTIONCENTER.COM](mailto:CONSULTING@ZURICHCONVENTIONCENTER.COM)

T. +41 44 206 36 20



We are leading the way in tackling climate change and have gone completely carbon neutral - including all of our catering services.