

# SALES MANUAL

Lucerne - Lake Lucerne Region







Lucerne

# CONTENTS

Lukas Hammer, Head of Marketing & Sales Market Manager for Americas, Middle East and Russia Tel. +41 (0)41 227 17 16   lukas.hammer@luzern.com	
Patrick Bisch, Project Manager, Assistant Head of Marketing, Market Manager for UK, Czech Republic and Poland Tel. +41 (0)41 227 17 13   patrick.bisch@luzern.com	
Nicole Kaufmann, Market Manager for Europe (Switzerland, Germany, Italy, Austria/ Hungary, Netherlands, France) Tel. +41 (0)41 227 17 19   nicole.kaufmann@luzern.com	
Mark Meier, Market Manager for Asia Pacific Tel. +41 (0)41 227 17 29   mark.meier@luzern.com	
Sibylle Gerardi, Head of Communications & PR Tel. +41 (0)41 227 17 33   sibylle.gerardi@luzern.com	
Hotel reservations Tel. +41 (0)41 227 17 27   hotels@luzern.com	
City tours Tel. +41 (0)41 227 17 17   stadtfuehrungen@luzern.com	
Lucerne Tourism, Zentralstrasse 5, 6002 Lucerne Tel. +41 (0)41 227 17 17   luzern@luzern.com	
Prices subject to change. Exchange rate €1 = CHF 1.20, subject to prevailing rate. Status: August 2014	
Photos/image rights: Emanuel Ammon / Elge Kenneweg / Christian Perret / Lorenz A. Fischer / Christoph Graf	
Material printed using climate-neutral process with eco inks and FSC-certified paper 	
The Swiss Tourism quality-assurance programme promotes the development and maintenance of quality standards in businesses in the tourist industry 	
ISO 14001 Environmental Management System 	
Lucerne in the heart of Europe	4
Facts and figures	5
Directions	6
Sights and museums	8
Hotels	10
Festivals and events	11
Shopping	12
City tours	13
Gastronomy	14
Nightlife	15
Customs	16
Christmas	17
Weggis Vitznau Rigi – the oasis of wellbeing	18
Meetings and congresses	20
Lucerne Connect	21
Lucerne - Lake Lucerne Region	22
Pilatus, Rigi	24
Titlis, Melchsee-Frutt	25
Stoos-Fronalpstock, Lake Lucerne Navigation Company	26
Bürgenstock Resort, Andermatt Swiss Alps	27
Engelberg-Titlis, Obwalden	28
Nidwalden, Schwyz	29
Uri, Andermatt	30
Panoramic rail journeys	32
Group activities	33
Activities	35
Sustainable activities	37
Winter activities	38



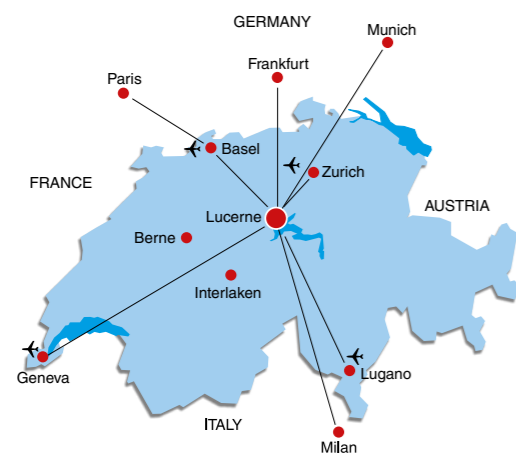


KKL Luzern culture and convention centre



River Reuss and the Jesuit Church, Lucerne

## LUCERNE IN THE HEART OF EUROPE



### Transport links

Excellent connections by rail (half-hourly services from/to e.g. Zurich, Bern), air (about one hour by road/rail from/to Zurich and Basel airports), boat and road (A2/A4 motorways).

CH	km	Road	Rail
Zurich	55	45 min	50 min
Interlaken	70	1 h	2 h
Basel	95	1 h	1 h
Bern	110	1 h 10 min	1 h
Lugano	170	1 h 45 min	2 h 30 min
Geneva	265	2 h 30 min	2 h 50 min

Europe	Road km	Rail	Direct flights to ZRH
Milan	235	3.5 h	55 min
Frankfurt	423	4 h	1 h 5 min
Paris	608	4.5 h	1 h 20 min
Prague	740	11 h	1 h 15 min
Vienna	780	9 h	1 h 20 min
Rome	830	7.5 h	1 h 30 min
Amsterdam	835	9.5 h	1 h 30 min
Berlin	911	8 h	1 h 25 min
Madrid	1647	19 h	2 h 10 min
Moscow	2830	35 h	3 h 15 min

## FACTS AND FIGURES

### Inhabitants

- Lucerne City 80,378
- Canton Lucerne 390,151
- Language German
- Currency Swiss franc (CHF)
- € accepted, credit cards accepted

### History

- 1178 Founding of Lucerne
- 1210 Opening of the Gotthard Pass; as the nearest town to the pass on this major north-south axis, Lucerne becomes an important land-lake transport centre
- 1333 Construction starts on outer fortifications, i.e. Musegg Wall with its nine towers, which still exists. Lucerne's trademark octagonal Water Tower was erected in the late 13th century
- 1407 Spreuer Bridge built
- 1836 First paddle steamer on Lake Lucerne
- 1859 First railway station opened
- 1863 Thomas Cook's first tour of Switzerland with stopover in Lucerne
- 1871 Vitznau-Rigi railway enters service between Vitznau and Staffelhöhe
- 1991 Inauguration of new railway station featuring imposing concourse by Spaniard Santiago Calatrava
- 1993 Chapel Bridge partially destroyed by fire
- 1994 Reconstruction of Chapel Bridge

### Location

434 m above sea level in the heart of Switzerland (with cantons Lucerne, Uri, Schwyz, Obwalden, Nidwalden). Lucerne's above-average quality of life and proximity to the country's commercial and financial centres make it a popular place to live and work.

Public holidays	2015	2016
New Year's Day	1 January	1 January
St. Berchtold's Day	2 January	2 January
Good Friday	3 April	25 March
Easter Sunday	5 April	27 March
Easter Monday	6 April	28 March
Ascension	14 May	5 May
Whitsun	24 May	15 May
Whitsun Monday	25 May	16 May
Corpus Christi	4 June	26 May
Swiss National Day	1 August	1 August
Assumption	15 August	15 August
St. Leodegar's Day	2 October	2 October
All Saints	1 November	1 November
Immaculate Conception	8 December	8 December
Christmas Day	25 December	25 December
Boxing Day	26 December	26 December



# DIRECTIONS

## Public transport in Lucerne

Lucerne operates a dense network of buses.  
[www.vbl.ch](http://www.vbl.ch)

Travelcards giving free travel on Lucerne's public transport system are included in all hotel reservations arranged through Lucerne Tourism (Lucerne and environs). The public transport card is valid for zones 101, 201, 202, 203 in 2nd class (not boats) from and including the day of arrival to the day of departure.

## Swiss Travel System

Swiss Travel Pass: the Swiss Travel Pass gives 4, 8, 15 or 22 days or one month's unrestricted travel throughout the Swiss Travel System's rail, PostBus, bus and boat network. As well as the panoramic routes, this includes trams, suburban travel in 75 towns, 50% discount on most cableways / mountain railways and free admission to more than 470 museums.

Swiss Flexi Pass: this gives 3, 4, 5 or 6 days' unrestricted travel within one month throughout the Swiss Travel System's network.

Available only to persons domiciled outside Switzerland and the Principality of Liechtenstein.

[www.sbb.ch](http://www.sbb.ch) | [www.swisstravelsystem.ch](http://www.swisstravelsystem.ch)

## Travel to Switzerland by rail

SBB | [www.sbb.ch](http://www.sbb.ch)

ÖBB | [www.oebb.at](http://www.oebb.at)

TGV | [www.tgv-lyria.com](http://www.tgv-lyria.com)

Citynightline/DB | [www.citynightline.ch](http://www.citynightline.ch)

## Flights

Swiss International Airlines and partner companies

Tel. +41 (0)848 700 700 | [www.swiss.com](http://www.swiss.com)

## Airport information

[www.euroairport.com](http://www.euroairport.com) | [www.gva.ch](http://www.gva.ch) | [www.flughafen-zuerich.ch](http://www.flughafen-zuerich.ch)

## Tell Pass

The Tell Pass is the easiest way to discover the Lucerne-Lake Lucerne Region. The travelcard offers unrestricted rail, bus and boat travel and is valid on most cableways / mountain railways, too – perfect for day trips and excursions at any time of the year. What's more, various bonus partners now offer discounts of between 20% and 50% on spa and museum admissions and cultural, outdoor and sporting activities.

	April to October	November to March
2 days' unrestricted	CHF 170 / € 142	CHF 100 / € 83
3 days' unrestricted	CHF 200 / € 167	CHF 130 / € 108
4 days' unrestricted	CHF 220 / € 183	CHF 150 / € 125
5 days' unrestricted	CHF 230 / € 192	CHF 160 / € 133
10 days' unrestricted	CHF 280 / € 233	CHF 200 / € 167
Children (6-16) 2-10 days (flat-rate)	CHF 30 / € 25	



● Coach parking ● Sights p. 8 ● Museums pp. 8/9

The days must be used consecutively without a break. No further discounts for Swiss Travel Pass, Half-Fare or GA travelcards, etc. Prices apply to 2nd class. Upgrades to 1st class (rail and boat) available from ticket counter on day of travel.  
[www.tell-pass.ch](http://www.tell-pass.ch) | Tel. +41 (0)41 360 70 73

## Rent-a-Bike cycle hire

Lucerne station, counter 21  
 Tel. +41 (0)51 227 32 61 | [www.rentabike.ch](http://www.rentabike.ch)  
 Lucerne youth hostel  
 Tel. +41 (0)41 420 88 00 | [www.youthhostel.ch/luzern](http://www.youthhostel.ch/luzern)  
 nextbike  
 Tel. +41 (0)41 50 80 800 | [www.nextbike.ch/de/luzern/](http://www.nextbike.ch/de/luzern/)

## Coach parking

Parking facility	Spaces	Charge period	Parking time	Cost per hour
1 Inseli	32	7.00–19.00	Max. 12 hrs day, summer only	CHF 5.–/€ 4, extra hours CHF 2-3.–/€ 1.6–2.5
2 Landenberg	13	7.00–19.00	Max. 7 days	CHF 1.–/€ 0.8 (30 mins)
3 Alpenquai	7	9.00–19.00	Max. 10 hrs day	CHF 2.–/€ 1.60
4 Löwenplatz	9	7.00–19.00	Max. 1 hr day	CHF 5.–/€ 4.–
5 Kasernenplatz	5	7.00–19.00	Max. 2 hrs day	CHF 5.–/€ 4.–
6 Brüel	10	–	Unlimited	Free of charge
7 Lido	3	–	Unlimited	Free of charge





Above: Jesuit Church, Lucerne  
Left: Lion Monument, Lucerne

+ For locations see map on page 7

**10 KKL Luzern culture and convention centre**

The KKL Luzern with its 1,840-seater concert hall is the work of the Parisian architect Jean Nouvel. The Lucerne Hall, the auditorium in the convention centre and the Museum of Art are also part of this sensational architectural masterpiece.

**14 Needle Dam**

The Needle Dam was built in 1859/60, and renovated and extended in 2009 – 2011. The water level of Lake Lucerne is still regulated manually by the removal or insertion of wooden "needles".

# SIGHTS AND MUSEUMS



**11 Chapel Bridge**

The Chapel Bridge was constructed in the first half of the 14th century as part of the city's fortifications. The painted panels added in the 17th century portray scenes of Swiss and local history, including biographies of the city's patron saints, Leodegar and Mauritius.

**12 Water Tower**

This octagonal tower, more than 34 metres in height, was built in about 1300 as part of the city's fortifications. It has been used as an archive, treasury, prison and torture chamber, and is now Lucerne's trademark attraction.

**13 Jesuit Church**

The Jesuit Church was constructed in 1666 as the first sacred baroque building in Switzerland. The vault was redecorated in the middle of the 18th century. Inside is a chapel devoted to Brother Klaus, patron saint of Switzerland, which contains the habit he wore.

**15 Spreuer Bridge**

Completed in 1408 as part of the city fortifications, the bridge features 67 paintings depicting the Dance Macabre added by Kaspar Meglinger between 1626 and 1635. This was the only place that chaff from cereals and foliage could be dumped into the river.

**16 Musegg Wall and its towers**

The Musegg Wall is part of the fortification ring built after 1386. Three of its nine towers are open to the public. The Zyt Tower is adorned by the oldest clock in the city, dating from 1535.

**17 Lion Monument**

The "Dying Lion of Lucerne" is one of the world's most famous monuments. Carved out of rock, it commemorates the heroism in 1792 of Swiss soldiers who died attempting to protect the Tuileries in Paris. Mark Twain described the Lion of Lucerne as "the saddest and most moving piece of rock in the world".

**20 Lucerne Museum of Art**

Ranked among the country's most important art museums, Lucerne's is known for its ambitious programme of national and international exhibitions. It focuses on contemporary art and aspects of its own collection.

www.kunstmuseumluzern.ch | Tel. +41 (0)41 226 78 00  
Opening hours: Tue – Sun 10.00 – 17.00 | Wed 10.00 – 20.00  
Prices: Adults CHF 15.–/€ 13.–, groups CHF 12.–/€ 10.–

**21 Bourbaki Panorama**

The giant painting in the round by Edouard Castres portrays the French Army of the East under General Bourbaki crossing over into Switzerland during the Franco-Prussian War. Visitors to the new permanent exhibition come away with a strong impression of the precarious conditions experienced by the 87,000 French soldiers during their internment in Switzerland.

www.bourbakipanorama.ch | Tel. +41 (0)41 412 30 30  
Opening hours: April–October, 09.00–18.00 daily.  
November–March, 10.00–17.00 daily.  
Prices: adults CHF 12.–/€ 10.–, groups CHF 10.–/€ 9.–

**22 Rosengart Collection**

Classic modernism takes centre stage at the Rosengart Collection: alongside unique groups of works by Pablo Picasso and Paul Klee, it features more than 20 other world-famous artists of the 19th and 20th centuries including Monet, Cézanne, Vuillard, Bonnard, Matisse, Braque, Léger, Miró, Chagall, and Kandinsky.

www.rosengart.ch | Tel. +41 (0)41 220 16 60  
Opening hours: April–October, 10.00–18.00 daily.  
November–March, 11.00–17.00 daily.  
Prices: adults CHF 18.–/€ 15.–, groups CHF 15.–/€ 13.–

**23 Swiss Museum of Transport**

Displayed at the Swiss Museum of Transport are more than 3,000 items illustrating the development of transport and mobility on road, rail and water, not forgetting air and space travel. The cinema features the country's largest screen, while the Planetarium and Hans Erni Museum are further excellent reasons for paying the museum a visit.

www.verkehrshaus.ch | Tel. +41 (0)41 370 44 44  
Opening hours: March–October, 10.00–18.00 daily.  
October–March, 10.00–17.00 daily.  
Prices: adults CHF 30.–/€ 25.–, groups CHF 26.–/€ 22.–

**24 Glacier Garden**

With its park, observation tower and historic Swiss House, the Garden takes visitors on a trip through time from the palm beach by the lake to the glaciers of the last ice age. Other attractions include a unique portrayal of the Alps in relief, the Million Year Show, temporary exhibitions and the Alhambra Mirror Maze.

www.gletschergarten.ch | Tel. +41 (0)41 410 43 40  
Opening hours: April–October, 09.00–18.00 daily.  
November–March, 10.00–17.00 daily.  
Prices: Adults CHF 15.–/€ 13.–, groups CHF 12.–/€ 10.–

**Other museums in Lucerne and environs**

Museum	Telephone	Website	Prices (adults)	Prices (groups)
Natural History Museum	+41 (0)41 228 54 11	www.naturmuseum.ch	CHF 8.–/€ 7.–	CHF 6.–/€ 5.–
History Museum	+41 (0)41 228 54 24	www.historischesmuseum.lu.ch	CHF 10.–/€ 9.–	CHF 8.–/€ 7.–
Richard Wagner Museum	+41 (0)41 360 23 70	www.richard-wagner-museum.ch	CHF 8.–/€ 7.–	CHF 6.–/€ 5.–
Alpineum	+41 (0)41 410 62 66	www.alpineum.ch	CHF 6.–/€ 5.–	CHF 5.–/€ 4.–
Museum in Bellpark	+41 (0)41 310 33 81	www.bellpark.ch	CHF 10.–/€ 9.–	CHF 8.–/€ 7.–
Military Museum	+41 (0)41 422 11 70	www.militaermuseum.ch	CHF 10.–/€ 9.–	CHF 10.–/€ 9.–

**Lucerne Museum Card:** this card (CHF 36.– / €30.–) gives unrestricted admission to all 11 of Lucerne's museums over two consecutive days. [www.luzern.com/museum-card](http://www.luzern.com/museum-card)

**Swiss Travel Pass:** free admission to almost all museums



Lucerne Museum of Art



Swissarena at the Swiss Museum of Transport



# HOTELS

www.luzern.com/hotel



Art Deco Hotel Montana, Lucerne



Blue Balls Festival, Lucerne

★ Name	Website	Rooms	Beds
5* Grand Hotel National	www.grandhotel-national.com	41	67
5* Palace Luzern	www.palace-luzern.ch	129	256
5* Schweizerhof	www.schweizerhof-luzern.ch	101	196
5* The Hotel	www.the-hotel.ch	30	60
4* Art Deco Hotel Montana	www.hotel-montana.ch	66	120
4* Hermitage Seehotel	www.hermitage-luzern.ch	69	138
4* Radisson Blu Hotel Lucerne	www.radissonblu.com/hotel-luzerne	189	358
4* Sonnmatt Luzern	www.sonnmatt.ch	106	122
4* Ameron Hotel Flora	www.flora-hotel.ch	161	287
4* Astoria	www.astoria-luzern.ch	252	440
4* Cascada Hotel	www.cascada.ch	66	106
4* Continental-Park	www.continental.ch	92	170
4* Des Balances	www.balances.ch	56	108
4* Grand Hotel Europe	www.europe-luzern.ch	169	350
4* Hofgarten	www.hofgarten.ch	18	34
4* Hotel Monopol Luzern	www.monopol-luzern.ch	73	138
4* Rebstock	www.rebstock-luzern.ch	30	48
4* Renaissance Lucerne Hotel	www.renaissance-luzerne.ch	86	172
4* Romantik Hotel Wilden Mann	www.wilden-mann.ch	49	89
4* Seeburg – Chalet Gardenia	www.hotelseeburg.ch	16	35
3* Hotel zum Weissen Kreuz	www.altstadthotelluzern.ch	21	54
3* Waldstätterhof	www.hotel-waldstaetterhof.ch	96	172
3* Ambassador	www.ambassador.ch	31	54
3* Baslerator Summer Pool Hotel	www.baslerator.ch	33	50
3* Bellevue	www.bellevue-luzern.ch	19	42
3* Best Western Hotel Krone	www.krone-luzern.ch	29	65
3* Best Western Hotel Rothaus	www.rothaus.ch	48	85
3* De la Paix	www.de-la-paix.ch	39	70
3* Des Alpes	www.desalpes-luzern.ch	45	85
3* Drei Könige	www.drei-koenige.ch	63	120
3* Hotel Le Stelle	www.lestelle.ch	10	20
3* ibis Styles Luzern City	www.ibis.com	115	190
3* Seeburg	www.hotelseeburg.ch	41	85
3* Thorenberg	www.thorenberg.ch	19	38
2* Stern Luzern	www.sternluzern.ch	15	30
2* Schlüssel	www.schluessel-luzern.ch	10	23
1* Hotel ibis Budget Luzern City	www.ibisbudget.com	128	239
0* Lucerne Youth Hostel	www.youthhostel.ch/luzern	45	206
0* Pickwick	www.hotelpickwick.ch	17	45
0* Rösli Guest House	www.roesli.ch	9	20
0* Villa Maria	www.villamaria-luzern.ch	10	20
0* Falken	www.hotel-falken.ch	15	34
Nc Alpha	www.hotelalpha.ch	47	90
Nc Beau Séjour au Lac	www.beausejourluzern.ch	30	50
Nc Hotel Alpina Luzern	www.alpina-luzern.ch	36	67
Nc Hotel & Restaurant Spatz	www.spatz-luzern.ch	15	30
Nc Linde		6	9
Nc Lion Lodge Luzern	www.lionlodge.ch	25	82
Nc Luzernerhof	www.luzernerhof.ch	60	122
Nc Magic Hotel	www.magic-hotel.ch	13	26
Nc Richemont Hotel	www.richemont.cc	14	35
Nc Royal	www.hotel-royal-luzern.ch	46	80
Nc Seminarhaus Bruchmatt	www.seminarhaus-bruchmatt.ch	25	30
Nc Tourist Hotel	www.touristhotel.ch	35	100
Nc Utoring Aparthotel	www.utoring.ch	63	194
Nc Weinhof	www.hotel-weinhof.ch	28	54

Nc = not classified



Holiday apartments:  
www.luzern.com/holiday-flat



Package offers:  
www.luzern.com/special-offers



Campsites:  
www.luzern.com/camping

## Top Events LUZERN+ FACEBOOK

## FESTIVALS AND EVENTS

Lucerne is famous for its calendar of festivals and events:  
classical, blues, rock, comics and thrilling sporting events.  
www.luzern.com/events

2015	2016	Event	Website
7. - 15.3.	16. - 24.4.	Fumetto – International Comix Festival	www.fumetto.ch
21. - 29.3.	March*	LUCERNE FESTIVAL at Easter	www.lucernefestival.ch
10. - 12.7.	May*	Rowing World Lucerne	www.ruderwelt-luzern.ch
14.7.	July*	Spitzen Leichtathletik Luzern (athletics)	www.spitzenleichtathletik.ch
17. - 25.7.	22. - 30.7.	Blue Balls Festival	www.blueballs.ch
14.8. - 13.9.	August/September*	LUCERNE FESTIVAL in Summer	www.lucernefestival.ch
26.9. - 4.10.	24.9. - 2.10.	World Band Festival	www.worldbandfestival.ch
25.10.	30.10.	SwissCityMarathon – Lucerne	www.swisscitymarathon.ch
7. - 15.11.	5. - 13.11.	Lucerne Blues Festival	www.bluesfestival.ch
21. - 29.11.	November*	LUCERNE FESTIVAL at the Piano	www.lucernefestival.ch

\*Exact date not known at time of printing





Shopping in Lucerne

## SHOPPING

Lucerne has a great variety of shops and boutiques offering an exquisite range of typical Swiss items such as chocolate, exclusive watches from world-famous brands, fine jewellery and attractive fashion. A visit to the weekly market along the Reuss on Tuesdays and Saturdays is an experience in itself.

General opening hours:  
 Mon–Wed 9.00–18.30,  
 Thu + Fri 9.00–21.00,  
 Sat 9.00–16.00.



Shops	Telephone	Website	Opening hours
<b>Watches</b>			
Bucherer	+41 (0)41 369 77 00	www.bucherer.ch	Mon–Wed 08.30–19.30, Thu 08.30–21.00 Fri–Sat 08.30–19.30, Sun 09.00–12.30, 14.00–19.00
Embassy	+41 (0)41 418 20 80	www.embassy.ch	Mon–Fri 08.30–18.30, Sat 08.30–16.00 (summer to 17.00) Sun 16.00–19.00 (summer)
Gübelin	+41 (0)41 417 00 10	www.guebelin.ch	Mon–Sat 8.30–19.30 (Thu to 21.00) Sun 09.00–12.30, 14.00–19.30
Swiss Lion AG	+41 (0)41 410 61 81	www.swisslion.ch	Mon–Fri 08.30–19.30, Sat 08.30–19.00, Sun 09.00–19.00
<b>Souvenirs</b>			
Casagrande	+41 (0)41 418 60 60	www.casagrande.ch	April – October: Mon–Sat 08.00–22.00, Sun 09.00–19.00 November – March: Mon–Fri 09.00–19.00 Sat 09.00–18.30, Sun 10.00–18.00
<b>Chocolate / confectionery</b>			
Max Chocolatier	+41 (0)41 418 70 90	www.maxchocolatier.com	Mon–Fri 10.00–18.30, Sat 09.00–16.00
Bachmann	+41 (0)41 227 70 70	www.confiserie.ch	Branch on Schwanenplatz Mon–Wed/Fri 07.00–19.00, Thu 07.00–21.00, Sat 07.00–17.30 from 15.3. Sun 09.30–19.00/from 15.9. Sun 09.30–18.00
<b>Centre</b>			
Manor	+41 (0)41 419 76 99	www.manor.ch	Mon / Tue / Wed 09.00–18.30, Thu / Fri 09.00–21.00, Sat 8.00–16.00
RailCity Lucerne	+41 (0)51 227 48 00	www.sbb.ch/railcity-luzern	Mon–Fri to 21.00 or later Sat/Sun/public holidays to 20.00 or later
Emmencenter, Emmen	+41 (0)41 260 61 12	www.emmencenter.ch	Mon/Tue/Thu 09.00–18.30, Wed/Fri 09.00–21.00 Sat 08.00–16.00
Pilatusmarkt, Kriens	+41 (0)41 348 22 22	www.pilatusmarkt.ch	Mon/Tue/Thu 09.00–18.30, Wed/Fri 09.00–21.00, Sat 08.00–16.00
Surseepark, Sursee	+41 (0)41 455 74 72	www.surseepark.ch	Mon–Wed/Fri 08.00–18.30, Thu 08.00–21.00, Sat 08.00–16.00
Länderpark, Stans	+41 (0)41 618 88 56	www.laenderpark.ch	Mon–Fri 09.00–20.00, Sat 08.00–18.00
<b>Market</b>			
Weekly market: vegetables, fruit and flowers	Along the Reuss		Tuesday and Saturday mornings
Flea market	Untere Burgerstrasse and Reusssteg		Saturdays from May to October
Monthly goods market	Bahnhofstrasse		1st Wednesday of month March to December
Crafts market	Weinmarkt; in December Hirschenplatz		1st Saturday of month April to December

Information supplied without liability. Subject to change. [www.luzern.com/go-shopping](http://www.luzern.com/go-shopping)

## CITY TOURS

Lucerne's various hidden corners are best discovered on a guided tour. We offer a large selection of classic and themed tours.



Above: City Train  
 Right: City tour



City tour	Time, prices and details	Languages*
<b>City tour</b> Join us as we visit the world-famous sights such as the Chapel Bridge and octagonal Water Tower, Jesuit Church and KKL Luzern, and find out amazing and amusing aspects of the history and everyday lives of the inhabitants. You discover hidden alleys and lively squares and catch a glimpse of the Musegg Wall crowning the city. The familiar and the new – Lucerne looks forward to your visit!	Duration: 2 hours Guide fee CHF 230.–/€ 190.– For single visitors: May–October daily; November–March Wednesdays and Saturdays April Wednesdays, Saturdays and Sundays Time: 09.45, CHF 18.–/€ 15.–, DE/EN Meeting point: Tourist Information Lucerne	CN, DE, EN, FI, FR, IT, JA, NL, PL, PT, RU, SV, ES, CS
<b>A chat by the fountain and a cold beer – water tour</b> Water plays a central role in Lucerne, which started out as a fishing village before becoming a trading centre followed by a world-famous destination. Water as a source of food, safe transport and motive power – and relaxation. We follow the scent of the lake, discover what links the city's fountains with Facebook, find out where beer is brewed and learn how high the Reuss reached in 1910 in the flood of the century. Immerse yourself in Lucerne, the city of water!	Duration: 2 hours Guide fee CHF 230.–/€ 190.–	DE, EN, FR, IT
<b>Journey back to the Middle Ages</b> Experience Lucerne as it was growing – when bells marked the daily routine and craftsmen plied their trades in the alleys. A time in which fortified towers, walls and bridges were erected and mercenaries and merchants shaped the city. On this tour, with a guide in medieval costume, we bring the Middle Ages to life in all its various aspects. (Various themes on request.)	Duration: 2 hours Guide fee CHF 280.–/€ 235.–	DE, EN, FR, IT
<b>Facades tell stories</b> Everything is a facade – but what lies behind? Facades exert a fascination thanks to their tales of magic and customs, trades and guilds. See a new side to Lucerne! Stroll around the houses with fresh eyes and discover the artists and their works: from grisaille painting to American street art, from Seraphin Weingartner and Hans Erni to "sprayfrei", the city's anti-graffiti campaign. (Various themes on request.)	Duration: 2 hours Guide fee CHF 230.–/€ 190.–	DE, EN
<b>Lucerne's fortifications – the Musegg Wall</b> Lucerne was once protected by a stone curtain wall and 30 towers. Ascend the Musegg and hear about the building of the wall, today a national monument. Enjoy the panoramic views and observe the mystical movement of the clock pendulum in the Zyt Tower. Erected more than six centuries ago, the timber-clad covered battlements are still a feature of Lucerne – silent witnesses to an eventful, troubled past.	Duration: 2 hours Guide fee CHF 270.–/€ 225.–	CN, DE, EN, FI, FR, IT, JA, NL, PL, PT, RU, SV, ES, CS
<b>City Train</b> The road-going City Train offers an overview of Lucerne. Audio information is available in various languages during the tour.	Duration: 40 minutes, April – October daily public tours, price per person CHF 10.– / € 8.–, special tour CHF 360.– / € 300.– flat-rate	DE, EN, FR, IT, ES, RU, CN, JA, NL, IND

\* Chinese: CN, German: DE, English: EN, Finnish: FI, French: FR, Indian: IND, Italian: IT, Japanese: JA, Dutch: NL, Polish: PL, Portuguese: PT, Russian: RU, Swedish: SV, Spanish: ES, Czech: CS

Max. 25 persons per guide. Prices subject to change. Other guided tours: [www.luzern.com/citytours](http://www.luzern.com/citytours)





Above: Lucerne Chügelpastetli / right: Stadtkeller Lucerne

## GASTRONOMY

Lucerne offers more than traditional Swiss fare. Available alongside the national cuisine are countless variations of international cuisine from every continent. The following selection will help you navigate Lucerne's eclectic gastronomy.

Other restaurants: [www.luzern.com/restaurants](http://www.luzern.com/restaurants)



Restaurant	Address	Telephone	Website	Capacity
<b>International cuisine</b>				
Restaurant Jasper, Palace Luzern	Haldenstrasse 10	+41 (0)41 416 16 16	<a href="http://www.palace-luzern.ch">www.palace-luzern.ch</a>	52*
Seerestaurant Baccara, Seehotel Hermitage	Seeburgstrasse 72	+41 (0)41 375 81 81	<a href="http://www.hermitage-luzern.ch">www.hermitage-luzern.ch</a>	80*
<b>Swiss cuisine</b>				
Stadtkeller Lucerne	Sternenplatz 3	+41 (0) 41 410 47 33	<a href="http://www.stadtkeller.ch">www.stadtkeller.ch</a>	300*
Brasserie Flora	Seidenhofstrasse 5	+41 (0)41 227 66 66	<a href="http://www.flora-hotel.ch">www.flora-hotel.ch</a>	70*
Fondue House	Eisengasse 15	+41 (0)41 412 37 37	<a href="http://www.fondue-house.ch">www.fondue-house.ch</a>	110
Restaurant Burgerstube	Bahnhofstrasse 30	+41 (0)41 210 16 66	<a href="http://www.wilden-mann.ch">www.wilden-mann.ch</a>	40*
Restaurant Rebstock	St. Leodegarstr. 3	+41 (0)41 417 18 19	<a href="http://www.rebstock-luzern.ch">www.rebstock-luzern.ch</a>	120
Restaurant Lapin, Hotel de la Paix	Museggstrasse 2	+41 (0)41 418 80 00	<a href="http://www.ambassador.ch">www.ambassador.ch</a>	50
Hotel Restaurant Waldstätterhof	Zentralstrasse 4	+41 (0)41 227 12 71	<a href="http://www.hotel-waldstaetterhof.ch">www.hotel-waldstaetterhof.ch</a>	70*
Wirtshaus Taube	Burgerstrasse 3	+41 (0)41 210 07 47	<a href="http://www.taube-luzern.ch">www.taube-luzern.ch</a>	120
<b>Swiss/int'l cuisine</b>				
Restaurant Nix's in der Laterne	Reusssteg 9	+41 (0)41 240 25 43	<a href="http://www.nixinderlaterne.ch">www.nixinderlaterne.ch</a>	45
Seerestaurant Seeburg	Seeburgstr. 53-61	+41 (0)41 375 55 55	<a href="http://www.hotelseeburg.ch">www.hotelseeburg.ch</a>	52*
Restaurant Galerie, Hotel Schweizerhof Luzern	Schweizerhofquai 3	+41 (0)41 410 04 10	<a href="http://www.schweizerhof-luzern.ch">www.schweizerhof-luzern.ch</a>	80*
Hotel, restaurant, pizzeria 1871	Klosterstrasse 4 Haldenstrasse 4	+41 (0)41 248 48 48 +41 (0)41 422 18 71	<a href="http://www.rothaus.ch">www.rothaus.ch</a> <a href="http://www.1871.ch">www.1871.ch</a>	80* 120
<b>Asian cuisine</b>				
Asian Fondue House	Falkengasse 6	+41 (0)41 410 37 37	<a href="http://www.asian-fondue-house.ch">www.asian-fondue-house.ch</a>	45
CHA CHA Thai Positive Eating	Bürgenstrasse 3	+41 (0)58 568 38 20	<a href="http://www.eatchacha.ch">www.eatchacha.ch</a>	50
China Restaurant Li Tai Pe	Furrngasse 14	+41 (0)41 410 10 23	<a href="http://www.litaipe.ch">www.litaipe.ch</a>	130
Indian Restaurant Kanchi	Zürichstrasse 4	+41 (0)41 410 67 08	<a href="http://www.kanchi.ch">www.kanchi.ch</a>	80
<b>Mediterranean cuisine</b>				
Restaurant Balances	Weinmarkt	+41 (0)41 418 28 28	<a href="http://www.balances.ch">www.balances.ch</a>	72*
Ristorante Bellini	Murbacherstrasse 4	+41 (0)41 228 90 50	<a href="http://www.continental.ch">www.continental.ch</a>	160*
Scala Restaurant, Art Deco Hotel Montana	Adligenswilerstr. 22	+41 (0)41 417 35 41	<a href="http://www.hotel-montana.ch">www.hotel-montana.ch</a>	120
Zum weissen Kreuz	Furrngasse 19	+41 (0)41 418 82 20	<a href="http://www.altstadthotelluzern.ch">www.altstadthotelluzern.ch</a>	150
<b>Spanish cuisine</b>				
Bolero Restaurant & Lounge Cascada	Bundesplatz 18	+41 (0)41 226 80 80	<a href="http://www.bolero-luzern.ch">www.bolero-luzern.ch</a>	100*

Tips are included in the price. The amount is often rounded up. \*Other function rooms available

## NIGHTLIFE

### Grand Casino Luzern

Total entertainment under one roof: gaming tables in the Grand Jeu Casino and slot machines in the Jackpot Casino; an atmospheric cocktail bar; Mediterranean-inspired culinary delights in Restaurant Olivo; live piano music; numerous shows, concerts and a club atmosphere.

Daily 12.00 – 04.00.

Admission to gaming area from 18 years of age with valid passport, European ID or Swiss driving licence.

[www.grandcasinoluzern.ch](http://www.grandcasinoluzern.ch)

Tel. +41 (0)41 418 56 56



Above: Grand Casino Luzern  
Left: Lucerne Theatre



Venue	Address	Telephone	Website
<b>Bars</b>			
Bar of the Hotel Des Balances	Weinmarkt	+41 (0)41 418 28 28	<a href="http://www.balances.ch">www.balances.ch</a>
Bar Lounge at Seeburg	Seeburgstrasse 53-61	+41 (0)41 375 55 55	<a href="http://www.hotelseeburg.ch">www.hotelseeburg.ch</a>
Bar National	Haldenstrasse 4	+41 (0)41 419 09 09	<a href="http://www.national-bar.ch">www.national-bar.ch</a>
Bar Seehotel Hermitage	Seeburgstrasse 72	+41 (0)41 375 81 81	<a href="http://www.hermitage-luzern.ch">www.hermitage-luzern.ch</a>
BLUE/Pacifico/Casablanca	Pilatusstrasse 15	+41 (0)41 226 87 87	<a href="http://www.schiller-luzern.ch">www.schiller-luzern.ch</a>
Louis Bar – Art Deco Hotel Montana	Adligenswilerstrasse 22	+41 (0)41 419 00 00	<a href="http://www.hotel-montana.ch">www.hotel-montana.ch</a>
Lounge & Bar suite	Pilatusstrasse 1	+41 (0)41 210 21 31	<a href="http://www.suite-lounge.ch">www.suite-lounge.ch</a>
Nectarbar	Inseliquai 12 b	+41 (0)41 211 07 04	<a href="http://www.nectar-bar.ch">www.nectar-bar.ch</a>
Penthouse – Roof Top Bar	Pilatusstrasse 29	+41 (0)41 226 88 88	<a href="http://www.penthouse-luzern.ch">www.penthouse-luzern.ch</a>
Schweizerhof Bar	Schweizerhofquai	+41 (0)41 410 04 10	<a href="http://www.schweizerhof-luzern.ch">www.schweizerhof-luzern.ch</a>
Seeburg	Europaplatz 1	+41 (0)41 226 73 08	<a href="http://www.kkl-luzern.ch">www.kkl-luzern.ch</a>
The Lounge – The Hotel	Sempacherstrasse 14	+41 (0)41 226 86 86	<a href="http://www.thelounge-luzern.ch">www.thelounge-luzern.ch</a>
<b>Concert/gig venues</b>			
Bar 59	Industriestrasse 5	+41 (0)41 360 52 00	<a href="http://www.bar59.ch">www.bar59.ch</a>
Jazzkantine zum Graben	Grabenstrasse 8	+41 (0)41 410 73 73	<a href="http://www.jsl.ch/kantine.htm">www.jsl.ch/kantine.htm</a>
Schüür – Konzertzentrum	Tribtschenstrasse 1	+41 (0)41 368 10 30	<a href="http://www.schuur.ch">www.schuur.ch</a>
Sedel – Musikzentrum	Sedel	+41 (0)41 420 63 10	<a href="http://www.sedel.ch">www.sedel.ch</a>
Stadtkeller Lucerne (Nov – March)	Sternenplatz 3	+41 (0)41 410 47 33	<a href="http://www.stadtkeller.ch">www.stadtkeller.ch</a>
<b>Cultural centres</b>			
KKL Luzern	Europaplatz 1	+41 (0)41 226 70 70	<a href="http://www.kkl-luzern.ch">www.kkl-luzern.ch</a>
Kleintheater Luzern	Bundesplatz 14	+41 (0)41 210 12 19	<a href="http://www.kleintheater.ch">www.kleintheater.ch</a>
Lucerne Theatre	Theaterstrasse 2	+41 (0)41 228 14 14	<a href="http://www.luzernertheater.ch">www.luzernertheater.ch</a>
Südpol Luzern – music, dance, theatre	Arsenalstrasse 28	+41 (0)41 318 00 40	<a href="http://www.sudpol.ch">www.sudpol.ch</a>
Treibhaus – youth and cultural centre	Spelteriniweg 4	+41 (0)41 360 14 88	<a href="http://www.treibhausluzern.ch">www.treibhausluzern.ch</a>

[www.luzern.com/night-life](http://www.luzern.com/night-life)





Left: cattle drive in Entlebuch / above: Carnival in Lucerne



Christmas in Lucerne

## CUSTOMS

### Carnival

Carnival is Lucerne's "fifth season". A glittering celebration in which chaos and lust for life reign for six days. Bizarre figures in fantastical masks and costumes parade through the alleyways, while musicians blow their instruments in joyful cacophony and thousands of costumed revellers dance the winter away. In 2015, the Lucerne carnival takes place on 12 – 17 Feb (4 – 9 Feb in 2016).

[www.luzerner-fasnacht.ch](http://www.luzerner-fasnacht.ch)

### Alpine cattle drives, funfairs and alpine markets

Various alpine cattle drives, funfairs and alpine markets take place in the Lucerne - Lake Lucerne Region in September and October. The Entlebuch cattle drive down from Sörenberg to Schüpheim features more than 200 cattle accompanied by herdsman and dairymen with bridled, traditional carts and various folk groups.

[www.luzern.com/traditions](http://www.luzern.com/traditions)

### Klausjagen

The Küssnacht Klausjagen (Nicholas Chase) is one of Europe's most imposing St. Nicholas' Day customs. The procession featuring 200 ornate "Iffelen" hats, the figure of St. Nicholas and the archaic din of more than 1,000 "Nicholas chasers" draws 20,000 spectators to Küssnacht am Rigi every year. The event normally takes place on 5 December.

[www.klausjagen.ch](http://www.klausjagen.ch)

### Swiss wrestling and alpine festivals

Numerous Swiss wrestling (Schwing) and alpine festivals take place every year, accompanied by yodelling, flag-throwing, alphorns and folk music. Events include the Rigi-Schwingen, the Brünig-Schwinget, the Innerschweizer Schwing and Alpine Festival and various cantonal wrestling festivals.

[www.luzern.com/traditions](http://www.luzern.com/traditions)

### William Tell – the legend

The story goes of how Emperor Albrecht tried to deprive the inhabitants of their freedom in the valleys of Uri, Schwyz and Unterwalden. The bailiffs he entrusted with this mission, Landenberg and Gessler, were tyrannical in their oppression of the people. Three men, Walter Fürst of Uri, Werner Stauffacher of Schwyz and Arnold Melchthal of Unterwalden, each with ten comrades, gathered on the Rütli Meadow, where they swore to win back freedom for their fatherland.

Gessler was not unaware of the general disaffection. In order to nip this in the bud, he had a pole erected in the town square of Altdorf, on top of which a hat was placed: everyone was ordered to bow to it to show their respect to him every time they passed by. William Tell, an honest man of the land, refused to do this. His punishment was to shoot an apple placed on top of his son's head with a bolt from a crossbow. Tell managed this without harming his son.

However, Gessler noticed that Tell had kept a second bolt in his bag. When questioned why, Tell replied: "With this second bolt I would have shot you had I hit my son." On hearing this, Gessler had him bound and taken across the lake by boat.

While on the water, a mighty storm broke out. The oarsmen begged Gessler to let Tell lead them to safety. On approaching the opposite shore, Tell suddenly leapt onto a protruding rock slab (now marked with the Tell Chapel) and made good his escape over the Axenberg and the Rigi to the Hohlen Gasse in Küssnacht, where he lay in wait for his foe, Bailiff Gessler. His plan worked: Gessler met his end with a bolt shot from Tell's crossbow.

[www.uri.info](http://www.uri.info)

## CHRISTMAS



Seasonally decorated Lucerne is especially beautiful during Advent. Lights and stars sparkling in the alleys and on the bridges reflect in the water. Christmas markets, the crib in front of the town hall with life-size figures, the famous Seeburg Christmas Hotel and traditional Christmas customs contribute to the special atmosphere.

[www.luzern.com/christmas](http://www.luzern.com/christmas)

### Christmas markets and events

Market/event	Location	Website	2014	2015	2016
Lucerne Christkindli market	Railway station, RailCity	<a href="http://www.christkindlimarkt.ch">www.christkindlimarkt.ch</a>	21.11.-23.12.	20.11.-23.12.	25.11.-23.12.
Lucerne Christmas market	Franziskanerplatz	<a href="http://www.weihnachtsmarkt.luzern.com">www.weihnachtsmarkt.luzern.com</a>	4.-21.12.	3.-20.12.	December*
Schweizerhof Christmas market	Hotel Schweizerhof Lucerne	<a href="http://www.schweizerhof-luzern.ch">www.schweizerhof-luzern.ch</a>	30.11. and 7.12.	29.11. 6. and 13.12.	November and December*
Lucerne Christmas and crafts market	Weinmarkt, Hirschenplatz	<a href="http://www.handwerksmarkt.ch">www.handwerksmarkt.ch</a>	6./13.20.12. 14./21.12. 8.12.	December*	December*
International Venite Christmas Forum	Kapellplatz	<a href="http://www.venite.ch">www.venite.ch</a>	18.-21.12.	17.-20.12.	15.-18.12.
Designer gift market	Kornschütte	<a href="http://www.designschenken.ch">www.designschenken.ch</a>	5.-7.12.	4.-6.12.	2.-4.12.
Pilatus Christkindli market	Pilatus Kulm	<a href="http://www.pilatus.ch">www.pilatus.ch</a>	-	20.-22.11.	18.-20.11.
Einsiedeln Christmas market	Klosterplatz	<a href="http://www.einsiedler-weihnacht.ch">www.einsiedler-weihnacht.ch</a>	29.11.-8.12.	28.11.-6.12.	26.11.-4.12.
Willisau Christkindli market	Willisau	<a href="http://www.christkindlimarkt.willisau.ch">www.christkindlimarkt.willisau.ch</a>	5.-8.12.	4.-6.12.	December*
Stans Christmas market	Höfli- und Steinmättli-Areal	<a href="http://www.stans.ch">www.stans.ch</a>	13.-14.12.	12.-13.12.	10.-11.12.
Christmas Hotel Seeburg	Seeburgstr. 53-61	<a href="http://www.weihnachtshotel.ch">www.weihnachtshotel.ch</a>	16.11.14-6.1.15	15.11.15-6.1.16	20.11.16-6.1.17
Live on Ice	Europaplatz	<a href="http://www.luzern.com/live-on-ice">www.luzern.com/live-on-ice</a>	27.11.14-4.1.15	December*	December*

\*Exact date not known at time of printing.

### City stroll: Pine Boughs and Bright Lights

Stroll through Lucerne with us as we help shorten the wait until Christmas. We reveal the secrets surrounding the Christ Child and Father Christmas, how pine trees found their way into our living rooms, and since when illuminations have been adorning our streets and squares. You hear seasonal and humorous stories featuring Lucerne's Christmas traditions in December and visit the life-size crib.

Duration: 1.5-2 hours  
Guide fee CHF 280.-/€ 235.-  
DE, EN, FR, IT, ES

[www.luzern.com/christmas-stroll](http://www.luzern.com/christmas-stroll)



# WEGGIS VITZNAU RIGI – THE OASIS OF WELLBEING

The delightful resorts of Weggis and Vitznau are located on the shores of Lake Lucerne at the foot of Mt. Rigi, the "Queen of the Mountains". This holiday region has been making a name for itself as one of Switzerland's best wellness destinations. It comprises four leading wellness hotels featuring first-class spa facilities and amenities.

This region is known as the Lucerne Riviera, owing to the many days of sunshine and the mildness of the climate that encourages warmth-loving flora such as palms, orchids and chestnut trees.

[www.wvrt.ch](http://www.wvrt.ch)

Certified wellness hotels				
★	Name, place	Website	Rooms	Beds
5*	Park Weggis, Weggis	<a href="http://www.phw.ch">www.phw.ch</a>	52	100
4*	Hotel Alexander & Gerbi, Weggis	<a href="http://www.alexander-gerbi.ch">www.alexander-gerbi.ch</a>	70	140
4*	Wellness Hotel Rössli, Weggis	<a href="http://www.wellness-roessli.ch">www.wellness-roessli.ch</a>	60	100
Other hotels				
★	Name, place	Website	Rooms	Beds
5*	Park Hotel Vitznau, Vitznau	<a href="http://www.parkhotel-vitznau.ch">www.parkhotel-vitznau.ch</a>	47	94
5*	Hotel Vitznauerhof, Vitznau	<a href="http://www.vitznauerhof.ch">www.vitznauerhof.ch</a>	53	100
4*	Post Hotel Weggis / POHO, Weggis	<a href="http://www.poho.ch">www.poho.ch</a>	45	90
4*	Beau-Rivage, Weggis	<a href="http://www.beaurivage-weggis.ch">www.beaurivage-weggis.ch</a>	39	70
4*	Campus Hotel Hertenstein, Weggis	<a href="http://www.campus-hotel-hertenstein.ch">www.campus-hotel-hertenstein.ch</a>	59	118
3*	Central am See, Weggis	<a href="http://www.central-am-see.ch">www.central-am-see.ch</a>	32	61
3*	Friedheim, Weggis	<a href="http://www.hotel-friedheim.ch">www.hotel-friedheim.ch</a>	26	52
3*	Frohburg, Weggis	<a href="http://www.frohburg.ch">www.frohburg.ch</a>	12	21
3*	Kurhaus Seeblick, Weggis	<a href="http://www.kurhaus-seeblick.ch">www.kurhaus-seeblick.ch</a>	47	60
3*	Seehof Hotel Du Lac, Weggis	<a href="http://www.hotel-du-lac.ch">www.hotel-du-lac.ch</a>	22	44
3*	SeeHotel Gotthard, Weggis	<a href="http://www.gotthard-weggis.ch">www.gotthard-weggis.ch</a>	16	32
3*	See- und Seminarhotel Flora Alpina, Vitznau	<a href="http://www.floraalpina.ch">www.floraalpina.ch</a>	57	100
3*	Terrasse am See, Vitznau	<a href="http://www.hotel-terrasse.ch">www.hotel-terrasse.ch</a>	21	42
3*	Hotel Rigi Kaltbad, Rigi Kaltbad	<a href="http://www.hotelrigikaltbad.ch">www.hotelrigikaltbad.ch</a>	52	100
3*	Edelweiss Rigi, Rigi Staffelhöhe	<a href="http://www.edelweiss-rigi.ch">www.edelweiss-rigi.ch</a>	20	36
2*	Seminar-Hotel Rigi am See, Weggis	<a href="http://www.hotelrigi.ch">www.hotelrigi.ch</a>	55	80
2*	Viktoria, Weggis	<a href="http://www.viktoria-weggis.ch">www.viktoria-weggis.ch</a>	8	14
2*	Alpina, Rigi Kaltbad	<a href="http://www.alpina-rigi.ch">www.alpina-rigi.ch</a>	9	16
0*	Bergsonne, Rigi Kaltbad	<a href="http://www.bergsonne.ch">www.bergsonne.ch</a>	15	30
Nc	Alpenblick, Weggis	<a href="http://www.alpenblick-weggis.ch">www.alpenblick-weggis.ch</a>	30	52
Nc	Kur- & Ferienhaus St. Otmar, Weggis	<a href="http://www.otmarsan.ch">www.otmarsan.ch</a>	18	30
Nc	Mirabell Budget Hotel, Weggis	<a href="http://www.budgetweggis.ch">www.budgetweggis.ch</a>	18	40
Nc	Schweizerhof, Weggis	<a href="http://www.schweizerhof-weggis.ch">www.schweizerhof-weggis.ch</a>	31	57
Nc	Rigi, Vitznau	<a href="http://www.rigi-vitznau.ch">www.rigi-vitznau.ch</a>	35	73
Nc	Berggasthaus Burggeist, Gersau	<a href="http://www.rigi-burggeist.ch">www.rigi-burggeist.ch</a>	10	29
Nc	Berghaus Unterstetten, Rigi Kaltbad		4	26
Nc	Festpark Hotel Felchlin, Rigi Staffel	<a href="http://www.festpark-rigi.ch">www.festpark-rigi.ch</a>	33	70
Nc	Heiri-Hütte, Rigi Klösterli	<a href="http://www.heirihuette.ch">www.heirihuette.ch</a>	2	6
Nc	Rigi First, Rigi First	<a href="http://www.rigifirst.ch">www.rigifirst.ch</a>	25	57
Nc	Rigi Klösterli, zum Goldenen Hirschen, Rigi Klösterli	<a href="http://www.kloesterli.ch">www.kloesterli.ch</a>	35	62
Nc	Rigi Kulm-Hotel, Rigi Kulm	<a href="http://www.rigikulm.ch">www.rigikulm.ch</a>	33	66
Nc	Rigi-Seebodenalp, Küssnacht a. Rigi	<a href="http://www.hotelseebodenalp.ch">www.hotelseebodenalp.ch</a>	10	24

Nc = not classified



### Rigi Kaltbad Mineral Baths and Spa

The public baths designed by Mario Botta comprise mineral baths and a spa area. The spacious indoor pool flows into the outdoor pool with its beautiful views of the mountains and lake. Guests of Hotel Rigi Kaltbad benefit from underground access to the facility and admission two hours before the general public.

[www.mineralbad-rigikaltbad.ch](http://www.mineralbad-rigikaltbad.ch)

Tel. +41 (0)41 397 04 06





# MEETINGS AND CONGRESSES

Hold your conference where others spend their holidays. Multi-functional event venues such as the KKL Luzern, Messe Luzern and Swiss Museum of Transport offer top-class amenities for a perfect event in Lucerne. Fascinating excursions and numerous business hotels provide the ideal environment.  
[www.luzern.com/meetings](http://www.luzern.com/meetings)



Lucerne

## Seminar and congress venues in Lucerne

Location	Largest halls	Area m <sup>2</sup>	Capacity			Additional rooms		Hotel Rooms / beds
			Concert	Seminar	Banquet	Number	Capacity	
D4 Business Village Lucerne	Eventraum	600	250	60	-	10	2-60	-
Eiszentrum Luzern	Eis-/Eventhalle	2400	5200	2000	1500	4	50-3000	-
	Curlinghalle	900	1000	500	400	4	50-3000	-
Grand Casino Luzern	Panoramasaal	570	550	330	400	2	20-250	-
	Casineum	360	220	100	160	2	20-250	-
KKL Luzern	Concert Hall	2100	1300	-	-	10	12-270	-
	Lucerne Hall	1280	1140	400	850	-	-	-
Messe Luzern	Halle 1	5000	5000	2000	4000	7	20-5000	-
	Forum 1	365	480	220	300	7	20-5000	-
swissporarena	Business Lounge	1053	600	300	400	6	50-150	-
Swiss Museum of Transport Conference Centre	Coronado	506	600	252	360	8	10-600	-
Grand Hotel National****	Saal Ritz	200	150	80	130	5	5-550	41/68
Hotel Schweizerhof Luzern*****	Zeugheersaal	360	450	200	300	8	4-500	101/196
Art Deco Hotel Montana****	Art Deco Saal	154	120	50	110	6	8-80	61/116
Hotel Astoria****	Raum 1	260	220	180	220	13	2-160	252/440
Radisson Blu Hotel Luzern****	Wasser 1 + 2	205	230	120	160	13	5-230	189/378
Campus Hotel Hertenstein****	Pilatussaal	226	150	100	150	11	2-170	59/118
Cascada Hotel****	Agua-Fuego-Aire	143	145	68	100	6	4-220	66/106
Grand Hotel Europe****	Grand Salle	237	200	160	200	60	2-99	169/331
Hotel Continental-Park****	Castelgrande + Montebello + Sasso Corbaro	268	270	120	210	11	2-120	92/170
Hotel Seeburg Luzern****	Panoramasaal	340	400	160	300	5	8-160	57/110
Hotel Pilatus-Kulm***	Gipfelsaal	217	150	100	160	5	2-300	30/60
Hotel Waldstätterhof***	Saal 108	55	50	30	40	6	6-50	96/172
Hotel Ibis Styles Luzern City***	Kolpingssaal + Weystube	240	240	120	140	4	6-60	115/196

## Team-building activities and side programmes

GanderEvent GmbH, Root-Lucerne Tel. +41 (0)41 455 27 00 <a href="http://www.ganderevent.ch">www.ganderevent.ch</a>	Executive Events, Zug Tel. +41 (0)41 747 43 66 <a href="http://www.executive-events.ch">www.executive-events.ch</a>	Trekking Team AG, Weggis Tel. +41 (0)41 390 40 40 <a href="http://www.trekking.ch">www.trekking.ch</a>
--	---	--

# LUCERNE CONNECT



## Travel trade

Tour operators: visit the Travel Trade Corner for key information on study trips, group/coach travel and the latest sales guide, plus contact details of the staff responsible for the various markets.  
[www.luzern.com/travel-trade](http://www.luzern.com/travel-trade)

## Social media

Lucerne Tourism maintains an active presence on the following social media:



[www.facebook.com/ilovelucerne](http://www.facebook.com/ilovelucerne)



[www.twitter.com/i\\_love\\_lucerne](http://www.twitter.com/i_love_lucerne)



[www.youtube.com/luzerntourismus](http://www.youtube.com/luzerntourismus)



[www.flickr.com/ilovelucerne](http://www.flickr.com/ilovelucerne)

## Online reputations

Restaurants and hotels are keen to maintain quality. That is why the restaurants and hotels include links to TripAdvisor and TRUSTYOU. Ask your customers to share their experiences in the Lucerne - Lake Lucerne Region using these online reputation platforms.



**TRUSTYOU**  
the standard for reputation



## Webcam

Our new Roundshot webcams offer your customers real-time views of Lucerne. They can also view archived and time-lapse images.  
[www.luzern.com/webcam-lucerne](http://www.luzern.com/webcam-lucerne)



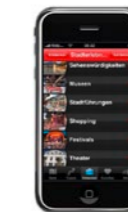
## Sales newsletter

Subscribe to our sales newsletter today. This notifies you of the latest projects and offers in the Lucerne - Lake Lucerne Region.  
[www.luzern.com/sales-newsletter](http://www.luzern.com/sales-newsletter)



## Useful apps

Various apps are available for when you're out and about and need information:  
[www.luzern.com/app](http://www.luzern.com/app)



City Guide Lucerne



Best Swiss Hotels



Snow report



Swiss Hike



Events



## Online brochures

All brochures are available from [www.luzern.com/prospekte](http://www.luzern.com/prospekte) in downloadable PDF format; they can also be viewed online.  
[www.luzern.com/brochures](http://www.luzern.com/brochures)

## Incoming agencies

Bucher Reisen AG  
Haldenstrasse 11  
6002 Lucerne  
Tel. +41 (0)41 418 55 44  
Fax +41 (0)41 418 55 00  
[info@bucherreisen.ch](mailto:info@bucherreisen.ch)  
[www.bucherreisen.ch](http://www.bucherreisen.ch)

Switzerland Travel Centre AG  
Switzerland: 0848 858 757  
Abroad: +41 43 210 55 00  
[www.stc.ch](http://www.stc.ch)  
[info@stc.ch](mailto:info@stc.ch)





- ### LUCERNE - LAKE LUCERNE REGION
- |               |                               |                        |                               |
|---------------|-------------------------------|------------------------|-------------------------------|
| 1 Pilatus     | 6 Melchsee-Fruttr             | 11 Uri                 | 16 UNESCO Biosphere Entlebuch |
| 2 Titlis      | 7 Lake Lucerne Navigation Co. | 12 Weggis Vitznau Rigi | 17 Stoos-Fronalpstock         |
| 3 Engelberg   | 8 Nidwalden                   | 13 Seetal              | 18 Andermatt                  |
| 4 Rigi        | 9 Obwalden                    | 14 Sempach             |                               |
| 5 Bürgenstock | 10 Schwyz                     | 15 Willisau            |                               |







Pilatus rack railway

**1** Lucerne's landmark mountain offers breathtaking views over the Alps and lakes, the world's steepest rack railway and modern yet historic hotels.

**Highlights:**

- Golden Round Trip: excursion with panorama gondolas, cableway, rack railway and boat from Lucerne
- Largest rope park in Central Switzerland and Switzerland's longest summer toboggan run (1,350 m) on Fränküntegg
- Ideal for hiking or strolling
- Pilatus Business Centre: flexible room concept for up to 300 persons and state-of-the-art infrastructure
- Wind and weatherproof glazed panoramic gallery

**Facts and figures**

Cost: Adults per person: CHF 72.-/€ 60.-  
 Groups of 10 or more, per person: CHF 57.60/€ 48.-  
 STS reduction: Swiss Travel Pass/Swiss Card/Swiss Flexi Pass/  
 Half-Fare and GA travelcards: 50% discount on standard prices  
 Operation: see [www.pilatus.ch](http://www.pilatus.ch) for operating times of individual sections  
 Excursion duration: 4-5 hours from Lucerne  
 Travel from Lucerne: car/coach to Kriens: 10 min.,  
 to Alpnachstad: 20 min., public transport to Kriens: 15 min.,  
 train to Alpnachstad: 20 min., by boat: 50 - 90 min.  
 Hotels and restaurants: Hotel Pilatus-Kulm and Hotel Bellevue

# PILATUS

2,132 possibilities above sea level  
 Tel. +41 (0)41 329 11 11  
[info@pilatus.ch](mailto:info@pilatus.ch) | [www.pilatus.ch](http://www.pilatus.ch)



TITLIS cliff walk

**2** The TITLIS is the highest vantage point in Central Switzerland and offers the only accessible glacier in the region. Experience perfect panoramic views of snow-capped mountains and unspoilt Alpine idylls. Get high on emotions!

**Highlights:**

- Rotair - the world's first revolving cable car
- Trip with the Ice Flyer chairlift over the glacier
- Glacier Park: the summer attraction for all ages with sliding toys and snow tubes
- Largest skiing and snowboarding area in the Lucerne - Lake Lucerne Region
- Hiking routes for all levels of ability and fitness

**Facts and figures**

Cost: Adults per person: CHF 89.-/€ 74.-  
 Groups of 10 or more, per person: CHF 71.-/€ 59.-  
 STS reduction: Swiss Travel Pass/Swiss Card/Flexi Pass/  
 Half-Fare and GA travelcards: 50% discount on standard prices  
 Operation: all year round  
 Excursion duration: approx. 5 hours from Lucerne  
 Travel from Lucerne: Car/coach to Engelberg 40 min.,  
 train 50 min.  
 Hotels and restaurants: Hotel Terrace, Berghotel Trübsee,  
 Panorama Restaurant Titlis, refuge at Stand, Restaurant Trübsee

# TITLIS

Experience a fabulous day out 3,020 metres up in the snow  
 Tel. +41 (0)41 639 50 50  
[titlis@titlis.ch](mailto:titlis@titlis.ch) | [www.titlis.ch](http://www.titlis.ch)



Rigi railway

**4** Offering a first-class year-round mountain experience, the Rigi is a majestic peninsula in Lake Lucerne boasting Europe's first rack railway, more than 120 km of footpaths and breathtaking 360° panoramic views.

**Highlights:**

- Classic Rigi Round Trip: fascinating round trip from Lucerne by boat, rack railway and panoramic aerial cableway
- Pure nostalgia: atmospheric paddle steamer from Vitznau
- Cable car restaurant: dine high above Lake Lucerne
- Rigi event marquee: the perfect event venue at Rigi Staffel for up to 750 persons
- Rigi Kaltbad Mineral Baths and Spa: bathe in a legendary setting with views of the mountains

**Facts and figures**

Cost: Adults per person: CHF 68.-/€ 55.-  
 Groups of 10 or more, per person: 54.40/€ 44.-  
 STS reduction: Swiss Card/Swiss Travel Pass/Swiss Flexi Pass/Swiss Saver Flexi Pass/Swiss Youth Pass/  
 Swiss Saver Pass: 100% discount  
 Operation: all year round  
 Excursion duration: approx. 5 hours from Lucerne  
 Travel from Lucerne: car/coach to Vitznau: 40 min.  
 Public transport to Vitznau (boat or train): 1 hour  
 Hotels and restaurants: Rigi Kulm Hotel, Hotel Rigi Kaltbad

# RIGI

Queen of the Mountains  
 Tel. +41 (0)41 399 87 87  
[rigi@rigi.ch](mailto:rigi@rigi.ch) | [www.rigi.ch](http://www.rigi.ch)



Melchsee-Frutt

**6** The miniature holiday resort of Melchsee-Frutt lies in the heart of the Lucerne - Lake Lucerne Region, surrounded by lakes and mountains. This family-friendly, car-free destination is popular with visitors summer and winter.

**Highlights:**

- Magnificent landscape with three crystal-clear lakes
- Fun rides on the Fruttli road-going train at 2,000 m
- Rock climbing on the Bonistock with more than 140 established routes
- Family-friendly hiking routes along the lakes and cosy restaurants
- Family-friendly winter sports with an 8 km sledge run to Stöckalp

**Facts and figures**

Cost: Adults per person: CHF 29.-/€ 24.20  
 Groups of 10 or more, per person: CHF 23.20/€ 19.30  
 STS reduction: Swiss Travel Pass/Swiss Card/FlexiPass:  
 50% discount on standard prices  
 Operation: Hours of operation at [www.melchsee-frutt.ch](http://www.melchsee-frutt.ch)  
 Excursion duration: 4 hours from Lucerne  
 Travel from Lucerne: Road: 45 min.  
 Hotels and restaurants: Glogghuis, Posthuis, Gemsy,  
 frutt Lodge & Spa, Distelboden, Bonistock, Tannalp

# MELCHSEE-FRUTT

A Central Swiss gem  
 Tel. +41 (0)41 669 70 60  
[info@melchsee-frutt.ch](mailto:info@melchsee-frutt.ch) | [www.melchsee-frutt.ch](http://www.melchsee-frutt.ch)





Fronalpstockgipfel

## STOOS-FRONALP-STOCK

Where Switzerland began  
Tel. +41 (0)41 818 08 08  
info@morschach-stoos.ch | www.stoos.ch

**17** The thrilling view from the Fronalpstock over 10 lakes, countless Alpine peaks and the vertical drop down to the Rütli Meadow is unique at any time of year.

### Highlights:

- Steep, spectacular funicular railway and comfortable chair lifts
- Come face-to-face with Swiss traditions, customs and history
- Natural, family-friendly viewing and holiday destination high above Schwyz and the Muotathal valley
- Prepared ridge trail from the Klingenstock to the Fronalpstock, plus many other footpaths and trails
- Easily accessible and varied winter skiing area

### Facts and figures

Cost (travelcard in summer / mountain card in winter)  
Adults per person: CHF 40.- / € 33.-  
Groups of 10 or more, per person: CHF 30.- / € 25.-  
STS reduction: Swiss Travel Pass / Swiss Flexi Pass / Swiss Youth Pass, etc. plus Half-Fare travelcard / free to Stoos with GA travelcard  
Operation: all year round  
Excursion duration: 4-5 hours from Lucerne  
Travel from Lucerne: car/coach to Schwyz (funicular valley terminus): 40 min. public transport to Schwyz, Stoosbahn: 66 minutes  
Hotels and restaurants: Seminar- und Wellnesshotel, Gipfel-restaurant Fronalpstock, various guest houses and restaurants



The Chedi Andermatt

## ANDERMATT SWISS ALPS

Tel. +41 (0)41 874 88 88  
info@ander-matt-swissalps.ch | www.ander-matt-swissalps.ch

**18** At 1,444 metres, the charming, traditional village of Andermatt draws visitors from the world over. Nestling in pristine Alpine scenery, the resort offers winter and summer activities including golf, angling, mountain biking, climbing, hiking and skiing.

The Andermatt Swiss Alps project sees Andermatt developing into a unique year-round destination. Six new 4 and 5-star hotels, apartment residences and chalets form the core of the Andermatt Swiss Alps project. New amenities and facilities including a swimming pool are envisaged, and work on expanding and modernising the SkiArena Andermatt-Sedrun installations has begun. The new 18-hole golf course is one of the summer highlights.

Early tangible evidence of the Andermatt Swiss Alps transformation is the 5-star Superior hotel The Chedi Andermatt, which opened in December 2013. Work on the second hotel, the Radisson Blu, began in 2014 and will feature hotel rooms and residences. The hotel complex comprises two restaurants and attractive conference and function facilities.

### Highlights:

- 18-hole golf course
- SkiArena Andermatt-Sedrun
- Devil's Bridge and Suvorov Monument
- The Chedi Andermatt



Panorama-Yacht Saphir

## LAKE LUCERNE NAVIGATION COMPANY

Tel. +41 (0)41 367 67 67  
info@lakelucerne.ch | www.lakelucerne.ch

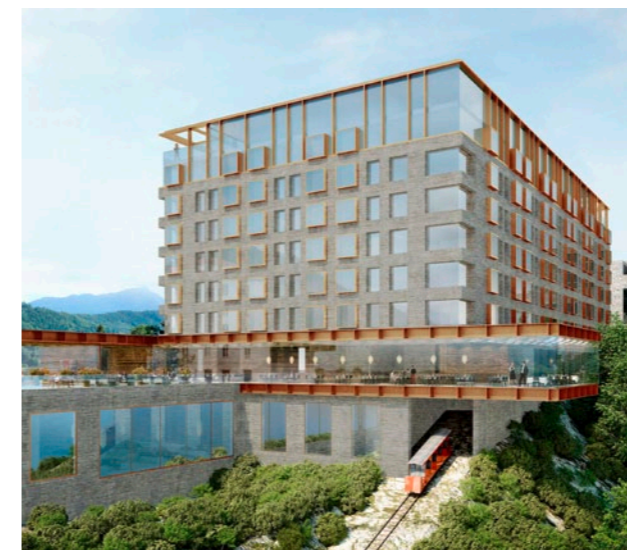
**7** Lake Lucerne fascinates with its scenic beauty and historic sites: 20 vessels including five vintage paddle steamers ply the lake, ideal for round trips and a wide variety of excursions.

### Highlights:

- One-hour round trip on the Panorama-Yacht Saphir with audio guide in 11 languages
- Various themed culinary cruises throughout the year, including Thai, brunch and fondue
- Sunset cruise by paddle steamer with three-course sunset menu (May to September)
- Lunchtime paddle steamer cruise (May to September)
- Trips in winter - various cruises every day
- Advent, Christmas and New Year's Eve cruises

### Facts and figures

Price of round-trip on the Panorama-Yacht Saphir:  
Adults per person: CHF 25.- / € 21.-  
Groups of 10 or more, per person: CHF 19.- / € 16.-  
STS reduction: Swiss Travel Pass valid on all scheduled cruises, discounted fares on the Saphir  
Operation: all year round  
Excursion duration: 45 minutes to 5 hours.



Bürgenstock Hotel

## BÜRGENSTOCK RESORT LAKE LUCERNE

Tel. +41 (0)41 612 90 10  
information@buergenstock.ch | www.buergenstock.ch

**5** The new Bürgenstock Resort near Lucerne is taking shape in readiness for its opening in 2017. Occupying a breathtaking location 500 metres above Lake Lucerne, the car-free resort is divided into three zones: Residence, Tourism/Spa & Conferences and Healthy Living.

It comprises three hotels with 400 rooms and 800 beds, 68 Residence Suites, 12 restaurants and bars, plus a unique portfolio of leisure and recreational activities set in pristine surroundings: walking, tennis, golf, curling, art and culture. The Bürgenstock Alpine Spa, set to be one of Europe's largest and most modern, will offer views of Lake Lucerne. The spa boasts three pools, a private garden with maze, an inspirational "Way of the Senses", Kneipp hydrotherapy and a spectacular infinity outdoor pool. The interior will feature a sauna zone, a steam bath, whirlpool baths, a gym area plus 15 treatment rooms and three private spas. The Bürgenstock funicular railway remains closed until the resort reopens. The Felsenweg and Hammetschwand Lift and restaurant are open from May to October. The Taverne 1879 restaurant and inn and the Trogen guest house are open.

### Highlights:

- Felsenweg (cliff-face path)
- Panoramic footpath 500 metres above the lake
- Hammetschwand Lift - Europe's tallest outdoor lift
- Unique, spectacular views





Engelberg

**3** This, the largest winter and summer holiday resort close to Lake Lucerne, is located at 1,000 m and can be reached in only 75 minutes from Zurich or Basel airports. Engelberg offers 2,250 hotel and guest house beds, as well as other accommodation in low-cost dormitories, holiday homes and a campsite. Engelberg looks back on a long, eventful history with the Benedictine monastery featuring prominently. Cableways and a funicular lead in all directions – including to the Titlis Glacier at 3,020 m, the Bruni and the Fürenalp.

#### Engelberg show dairy

The production and sale of cheeses enjoys a long tradition at Engelberg Monastery. Here in Switzerland's only monastery-based show dairy, visitors can see how cheese is made by hand.

#### Summer paradise

A choice of 360 km of footpaths and trails. The adventurous can let off steam in the rope park, abseil into a glacial crevasse or try via ferrata climbing. There is no opportunity for boredom in Engelberg.

#### Winter and snowsports

A season from October to May with 82 km of runs and one of the longest descents in the Alps at 12 km. Non-alpine skiers can enjoy cross-country skiing, sledging and snowshoeing.

#### FIS Ski Jumping World Cup

Switzerland's only ski jumping world cup on the world's longest natural jump featuring top competitors: the world cup weekend is a superlative experience that takes place in Engelberg every year.

## ENGELBERG-TITLIS

Engelberg-Titlis Tourism | Tel. +41 (0)41 639 77 77  
welcome@engelberg.ch | www.engelberg.ch



Stanserhorn Cabrio

**8** Nowhere in the world are there so many mountain railways and cableways concentrated in such a small area: the Pilatus, Titlis, Stanserhorn and Bürgenstock are world-famous. Between Lucerne and Engelberg, Nidwalden has more than 40 mountain railways, cableways and tourist destinations on the shores of Lake Lucerne. It has so much to offer in the way of accommodation, and its leisure and recreational facilities are popular with visitors. Nidwalden enjoys a rich heritage when it comes to sacred sites of interest, including pilgrim trails (Maria Rickenbach) and "places of power" (up to 28,000 Bovis units), as well as culture and traditions. A visit to Switzerland's last-remaining traditional glassworks in Hergiswil is great whatever the weather.

#### Innovative world-first on the Stanserhorn: Cabrio®

The double-deck aerial cable car with an open top deck allows visitors to enjoy the wind in their hair as they ascend to the peak.

#### Winter fun and relaxation

Nidwalden offers family-friendly snowsports in Klewenalp and Wirzweli, and pristine nature on the Bannalp and Niederrickenbach / Haldigrat. A great place for snowshoe tours and off-piste skiers!

#### Summer activities

Choose from swimming in the lake, canoeing, sailing, diving, hiking and barbecuing, mountain biking, golfing, archery and paragliding, quad bike touring, rope park and rock climbing.

#### Gastronomy and hospitality

Nidwalden has more than 100 hotels and restaurants – including rustic eateries up in the mountains – plus around 50 varieties of cheese. Completing the offer in the canton's glorious natural setting are comfy holiday lets, sleep-in-straw farms and campsites.

## NIDWALDEN

Nidwalden Tourism | Tel. +41 (0)41 610 88 33  
info@nidwalden.com | www.nidwalden.com



Älggialp, Obwalden

**9** This pearl between Lucerne and Interlaken is far more than just the central point of Switzerland. Obwalden is the place to be for sports devotees, music lovers, culture vultures and gastronomes – individuals, families and groups alike. Obwalden is notable for its scenically varied landscapes in the midst of mountains, forests and lakes. The range of activities, traditions and customs is a delight. One attraction that doesn't depend on the weather is the world's only underground shooting centre – the Brünig Indoor in Lungern. You sleep well in Obwalden – the destination where dreams come true.

#### Älggialp – geographical centre

The geographical centre point of Switzerland is on the Älggialp in Obwalden. Find peace and relaxation at this mystical place, far removed from everyday bustle.

#### Flüeli-Ranft pilgrimage site

Flüeli-Ranft, where the holy Brother Klaus was born and where he lived, is a popular place of pilgrimage. Relax in the seclusion of nature on the Way of St. James.

#### Switzerland's largest moorland setting

Boasting countless species of flora and fauna, the country's most extensive stretch of moorland lies above Sarnen around Glaubenberg-Langis. The themed Moorbäer Trail is fun for all ages.

#### Obwalden – fishing paradise

Obwalden's waterways and lakes are home to more than 30 species of fish. The water is crystal clear and clean enough to drink. Obwalden's picturesque terrain offers fabulous fishing.

## OBWALDEN

Obwalden Tourism | Tel. +41 (0)41 666 50 40  
info@obwalden-tourismus.ch | www.obwalden-tourismus.ch



Lake Lauerz with the Mythen

**10** Natural wonders, customs, cultural treasures, history: there are so many facets to Schwyz. Nature-lovers journey into the Muotathal Valley to explore the karstic landscape of Silberer or the coldest place in Switzerland – the Glattalp. Carnival, Sennenchilbi fairs, St. Nicolas processions and Swiss wrestling festivals show the traditional side of Schwyz. While the upland moors, mountains and lakes invite exploration, Einsiedeln Monastery is a place of peace and contemplation. The Museum of Swiss Charters and battlefield at Morgarten are reminders of Switzerland's beginnings. Mount Rigi and the Fronalpstock offer bird's-eye views of Schwyz.

#### Victorinox Museum

The exhibition presents the history of the Swiss Army knife and includes a variety of rare exhibits. If advance notice is given, visitors can assemble their own pocket knife.

#### Forum of Swiss History

A modern history museum and a place to encounter and experience cultural history. The new permanent exhibition explaining the emergence of Switzerland brings history to life.

#### Einsiedeln Monastery

The monastery looks back on a 1,000 year history. Pilgrims from all over the world pray to its Black Madonna, while the abbey library houses very early examples of book illumination. The Marstall is Europe's oldest stud.

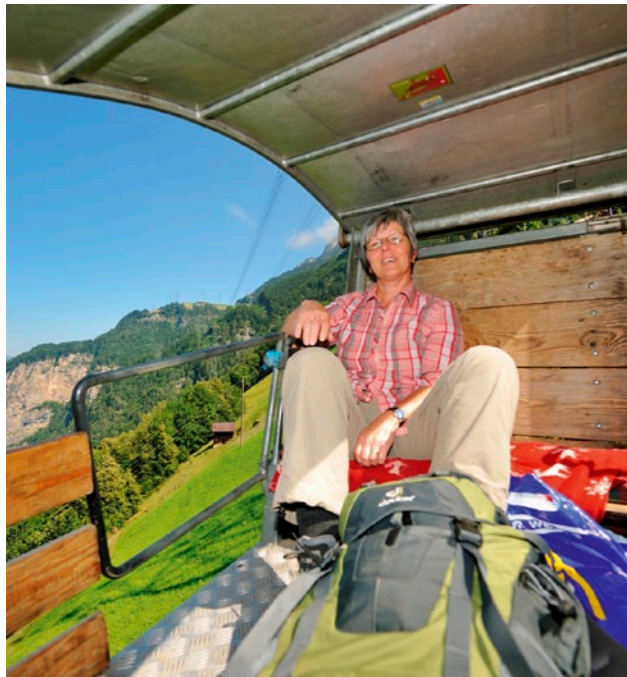
#### Bödmeren primeval spruce forest

Official hiking trails lead through this natural tract of forest in the Muotathal Valley. Beneath the home of the "weather prophets" stretches one of Europe's largest accessible cave systems – the Hölloch.

## SCHWYZ

Schwyz Tourism | Tel. +41 (0)41 855 59 50  
info@schwyz-tourismus.ch | www.schwyz-tourismus.ch





Gibel cableway, Uri

**11** Between the blue waters of the Lake Uri and the glaciers of the Gotthard massif lies an ancient landscape of unsurpassed diversity. The Alps in the holiday destination of Uri are pristine and full of life. There's no escaping their enchantment once they have cast their spell over you. This is a land of incredible stories, myths and legends. An extensive network of hiking trails and spectacular mountain bike routes lead into an imposing mountainscape. Uri is a place of culture: music, museums, art and culture trails forge a link between tradition and the present day.

**Uri – aerial cableways galore**

Providing effortless access to friendly mountain guest houses and idyllic picnic areas, the 37 aerial cableways are ideal starting points for walks and hikes.

**Uri – mountain biking paradise**

Fabulous biking thanks to 16 local trails and a downhill route, with magnificent views in imposing scenery between the Alps and Lake Uri.

**Discovering the Tell myth**

The original locations featured in the myth of Swiss freedom-fighter William Tell are still very much in evidence in Uri, ensuring a fascinating journey of discovery.

**Living culture and customs**

2015: Alpentöne international music festival  
 2016: Tellspiele enactments, folk music festival  
 Annual: Isenthal crafts market, alpine cheese market, December Days

URI

Uri Tourismus AG | Tel. +41 (0)41 874 80 00  
 info@uri.info | www.uri.info



Andermatt

**18** The holiday resort on the Gotthard is a place where nature-lovers like to kick back and relax all year round. Andermatt lies in the heart of the Alps and is easily accessible as it's so central. The resort boasts Central Switzerland's largest winter sports area, including alpine and cross-country skiing, groomed footpaths, snowshoeing trails and lots more. Visitors are well served in summer, with an abundance of nature, countless little lakes, glaciers and lovely side valleys, all of which can be explored on foot or by mountain bike. Currently emerging in Andermatt is a luxury resort featuring hotels, apartments and villas (see p. 27).

**MTB destination**

Mountain bikers, cyclists and e-bikers benefit from a network of more than 250 km of waymarked trails and innumerable pass roads and passes. The San Gotthardo BikePass can be used all day long on the public transport system.

**Refuge hikes**

The region's 14 refuges (and many more in adjacent areas) offer a unique experience in pristine nature. They are all interconnected by hiking trails.

**SkiArena Andermatt-Sedrun**

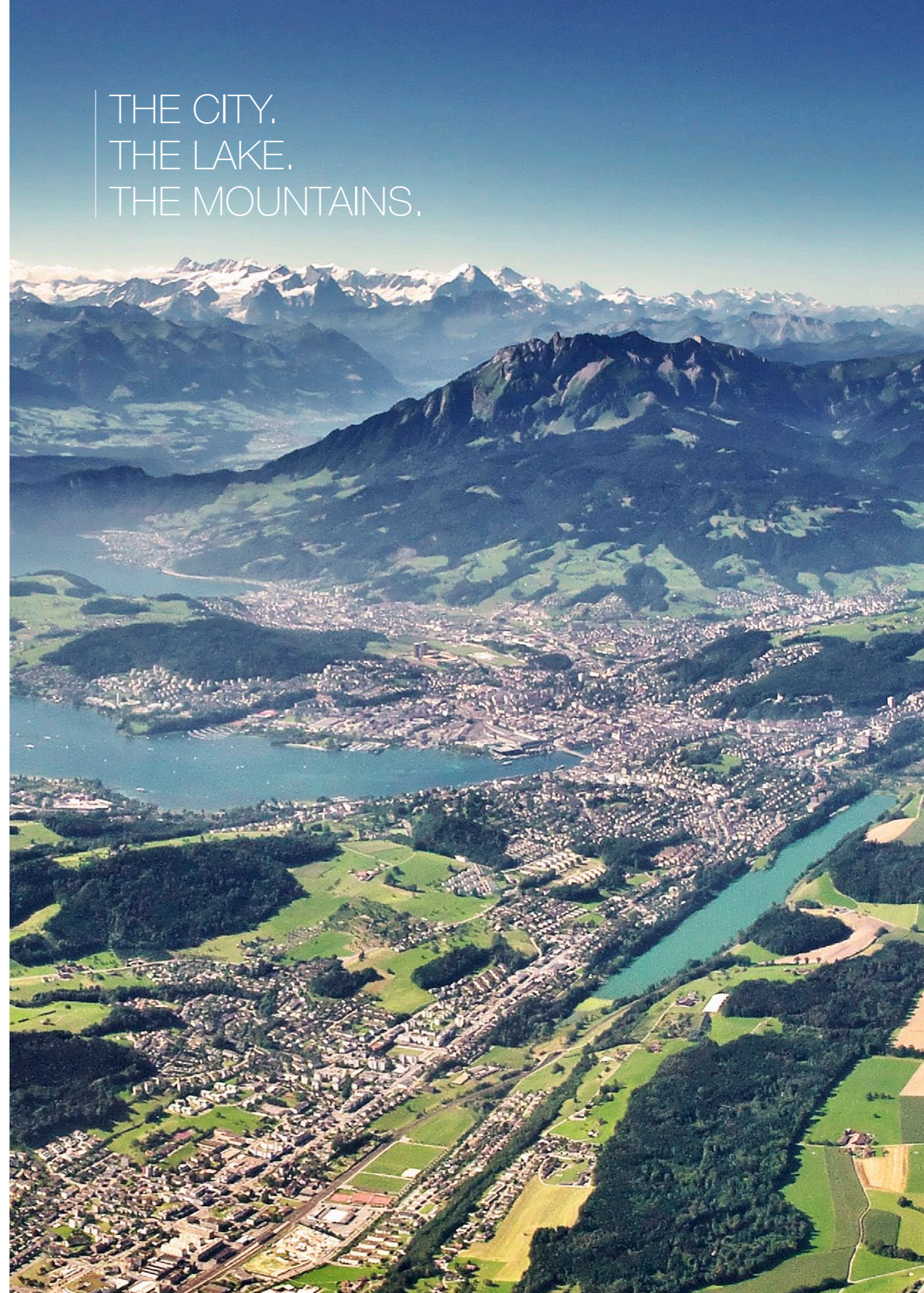
120 km of groomed and varied runs. Excellent off-piste conditions. The installations are being renewed over the next few years as the resort expands.

**Activities away from the pistes**

Aside from the skiing, the resort offers 36 km of groomed footpaths, six waymarked snowshoe trails and 28 km of prepared cross-country skiing (classic and skating).

ANDERMATT

Andermatt Resort | Tel. +41 (0)41 888 71 00  
 info@anderstatt.ch | www.anderstatt.ch



THE CITY.  
 THE LAKE.  
 THE MOUNTAINS.





Zentralbahn railway



Hergiswil Glassworks

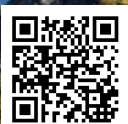
## PANORAMIC RAIL JOURNEYS

Route	Information
<p><b>Wilhelm Tell Express Lucerne – Ticino</b>                      The journey into Mediterranean-like southern Switzerland starts with a cruise on a vintage paddle steamer or saloon motor vessel on sparkling Lake Lucerne. From Flüelen, the journey in a comfortable first-class panoramic coach proceeds along the world-famous Gotthard rail route to Bellinzona, Lugano or Locarno.</p>	<p>Duration: approx. 5 hrs  <a href="http://www.sbb.ch/tellexpress">www.sbb.ch/tellexpress</a></p>
<p><b>BLS RegioExpress Lucerne – Bern</b>                      The route from Lucerne to Bern through the Entlebuch and Emmental regions is one of Switzerland's best-kept rail secrets. The Entlebuch is Switzerland's first UNESCO biosphere. Low-roofed farmhouses in the hilly countryside are typical of the Emmental.</p>	<p>Duration: 1 hr 29 min / hourly  <a href="http://www.bls.ch/luzern-bern">www.bls.ch/luzern-bern</a></p>
<p><b>Voralpen-Express Lucerne – St.Gallen</b>                      The Voralpen Express is the direct rail connection between Lucerne and St. Gallen. This enchanting route passes four lakes and shows various aspects of the pre-alpine topography. It takes about two hours to travel from Lake Lucerne over Switzerland's highest railway viaduct to the UNESCO World Heritage town of St.Gallen.</p>	<p>Duration: approx. 2 hrs 15 min / hourly  <a href="http://www.voralpen-express.ch">www.voralpen-express.ch</a></p>
<p><b>GoldenPass Line Lucerne – Montreux</b>                      Two languages, three worlds, eight lakes, one line: the GoldenPass Line ranks among one of Switzerland's most enchanting panoramic routes. Connecting Lucerne with the Vaud Riviera via Interlaken and Zweisimmen, the trip takes about four and a half hours and involves three railway companies.</p>	<p>Duration:                      Lucerne – Interlaken Ost: 1 hr 50 min                      Interlaken Ost – Zweisimmen: 1 hr 11 min                      Zweisimmen – Montreux: 1 hr 48 min  <a href="http://www.goldenpassline.ch">www.goldenpassline.ch</a></p>
<p><b>Lucerne – Engelberg Express / Lucerne – Interlaken Express</b>                      It takes just 43 minutes by train to reach the mountain village of Engelberg at the foot of Mt. Titlis (3,208 m). The two-hour trip over the Brünig Pass to Interlaken passes five lakes and countless waterfalls and rivers. The alpine views from either route make for a magnificent experience.</p>	<p><a href="http://www.zentralbahn.ch/panorama">www.zentralbahn.ch/panorama</a></p>

## GROUP ACTIVITIES

Provider / telephone / website	Details
Aeschbach Chocolatier AG, Root / Lucerne +41 (0)41 747 33 33 <a href="http://www.chocolatier.ch">www.chocolatier.ch</a>	The tour of the company's production premises where pralines are dipped and decorated is led by an Aeschbach chocolatier. Visitors can then visit the interactive presentation explaining how cocoa is turned into mouthwatering chocolate. German / English
Agrovision Burgrain AG +41 (0)41 980 39 93 <a href="http://www.agrovision.ch">www.agrovision.ch</a>	Burgrain is where organic food is grown on 40 hectares of land, processed and marketed. Managing director Andi Lieberherr takes visitors on a tour of the premises, including the cattle stabling, poultry section and bee hives, ProSpecieRara orchards and organic cheese dairy and bakery. German
AlpTransit Gotthard AG +41 (0)41 884 72 90 <a href="http://www.alptransit.ch">www.alptransit.ch</a>	Visitors learn all about the construction of the 57 km New Rail Link through the Alps project, the world's longest railway tunnel, and are shown around the site. German / English
Chronoswiss AG, Lucerne +41 (0)41 552 21 52 <a href="http://www.chronoswiss.com">www.chronoswiss.com</a>	Visit the Chronoswiss display workshop to observe the intricate craftsmanship of watchmaking and discover the industry's historical milestones. See the watchmakers at work; an interactive tour explains the world of watches and the history of Chronoswiss. German / English / Chinese
Fassbind AG, Oberarth +41 (0)41 859 04 04 <a href="http://www.fassbind.ch">www.fassbind.ch</a>	Steaming copper vessels and the aroma of clear spirits. On a tour of Switzerland's oldest distillery visitors learn all about the manufacture of delectable fruit eau-de-vie. German / English / French / Italian
Hergiswil Glassworks +41 (0)41 632 32 32 <a href="http://www.glasi.ch">www.glasi.ch</a>	Visitors learn the 190-year history of the glassworks in the 'cabinet of illusions'. They can play on glass instruments, observe optical phenomena and learn all about the latest applications to which this ancient material lends itself to. Pre-booking essential. German / English / French / Italian
Hochstamm Seetal AG +41 (0)41 910 58 88 <a href="http://www.hochstamm-seetal.ch">www.hochstamm-seetal.ch</a>	Depending on the season, witness the taller-than-usual fruit trees grown here. Tours of farms and seminar venues in the Seetal and Lake Sempach area are available from experts in the field. German
Kambly SA, Trubschachen +41 (0)34 495 02 22 <a href="http://www.kambly.ch">www.kambly.ch</a>	A multimedia show explains the Kambly story and the production of the biscuits. The show confectionery, a café and over 100 biscuits to taste are further highlights. German / English / French / Italian
Swiss Chocolate Adventure, Swiss Museum of Transport, Lucerne +41 (0)41 370 44 44 <a href="http://www.verkehrshaus.ch">www.verkehrshaus.ch</a>	The Swiss Chocolate Adventure is a tourist experience that connects visitors in a compelling way with the discovery, provenance, manufacture and transport of chocolate. Seeing, hearing, tasting: this multimedia voyage of discovery appeals to all the senses. German / English / French / Italian / Spanish / Mandarin

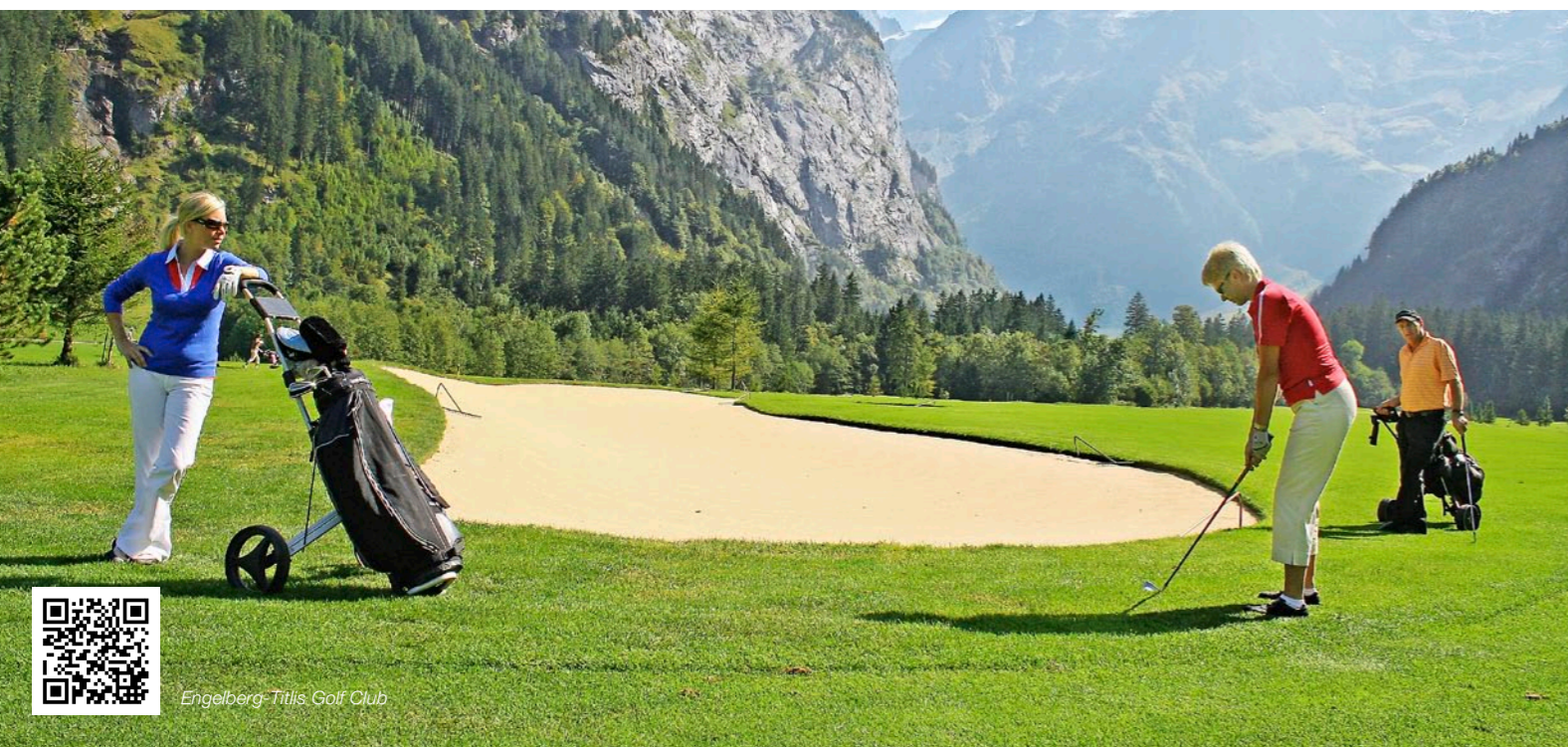




Brüsti, Uri



Chänzell, Seeltsberg



Engelberg-Titlis Golf Club

# ACTIVITIES

## Hiking tips

Route	Information
<b>Four Lakes High-Altitude Trail / Melchsee-Frutt – Engelberg (Lake Trüb)</b> The Four Lakes High-Altitude Trail is one of Switzerland's loveliest walking routes. The setting-off point is the upper terminus of the Melchsee-Frutt aerial cableway.	<a href="http://www.engelberg.ch">www.engelberg.ch</a> <a href="http://www.melchsee-frutt.ch">www.melchsee-frutt.ch</a>
<b>Rossweid – Kemmeribodenbad</b> Take the gondola cableway from Sörenberg village to Rossweid. The trail is more or less flat to Salwidedli, then slightly downhill to Kemmeriboden-Bad. The gondola saves the climb, which means that the walk is suitable for less experienced visitors and families.	<a href="http://www.biosphaere.ch">www.biosphaere.ch</a>
<b>Walen Trail / Oberrickenbach – Engelberg</b> The Walen Trail is a unique high-altitude trail between the Brunnig and Bannalp areas. This 11 km route features a unique environment featuring the mysterious Walenstock mountains and views reaching into the Swiss Mittelland region.	<a href="http://www.bannalp.ch">www.bannalp.ch</a>
<b>Swiss Path</b> The Swiss Path is arguably the best-known round walk in the country. It takes in various spots with links to Switzerland's past. The 35 km Path was a joint endeavour by all the country's cantons to mark the Confederation's 700th anniversary (1291–1991). Arranged as a series of sections, it is partly wheelchair-accessible and can be reached by boat and train. It begins on the Rütli Meadow, birthplace of the Confederation, and follows the shoreline of Lake Uri before ending in Brunnen on Auslandschweizerplatz.	<a href="http://www.weg-der-schweiz.ch">www.weg-der-schweiz.ch</a>
<b>Stoos Ridge Trail / Klingenstock – Fronalpstock</b> The Stoos Ridge Trail between the Klingenstock and Fronalpstock offers views of 10 lakes and countless peaks in Central Switzerland. Aside from the fascinating panorama, there is a wealth of alpine flowers to be admired.	<a href="http://www.morschach-stoos.ch">www.morschach-stoos.ch</a>

Other walking tips: [www.luzern.com/hike](http://www.luzern.com/hike)

## Cycling and MTB tips

Route	Information
<b>Lakes Route sections 5 &amp; 6 / Meiringen – Sarnen – Zug</b> The Brüning Pass marks the border between canton Bern and Central Switzerland; the two are bound by a pilgrim's way, a railway and a dialect. Obwalden: a small canton consisting of one large valley, a pre-alpine landscape dotted with hamlets and shallow lakes, and long-standing traditions. You barely have time to catch a glimpse of one tip of Lake Lucerne before Mt. Pilatus gets in the way. Bay upon bay, all the way to Lucerne, the fixed point of every tourist. Lake Zug is perhaps more charming – it's where the cherry tarts are juicy and the wallets full to overflowing.	<a href="http://www.swisstrails.ch">www.swisstrails.ch</a>
<b>Lucerne round trip</b> This route leads through the Seetal and Lake Sempach region to Willisau. It continues on to Sörenberg and over the Glaubenbielen Pass back towards Lucerne. Shortly thereafter an almost surprising stillness envelopes the forests and fields, and then Lakes Baldegg and Sempach, bordered by reeds, appear, soothing the eyes and nerves. The rider can then taste the bitter-sweet Willisauer Ringli at the pretty little destination town.	<a href="http://www.swisstrails.ch">www.swisstrails.ch</a>
<b>Napf Bike / Bern – Lucerne</b> Between Bern and Lucerne lies the Emmental, a lovely hilly region ideal for mountain bike touring. The high point of the tour is the Napf with its unforgettable all-round view.	<a href="http://www.swisstrails.ch">www.swisstrails.ch</a>
<b>Gottardo BikePass</b> Eight famous passes – the Gotthard, Furka, Nufenen, Susten, Grimsel, Oberalp, Lukmanier and Klausen – are waiting to be climbed. Cyclists can have their BikePass stamped on completing a pass. A full BikePass can be exchanged for a personalised certificate.	<a href="http://www.uri.info">www.uri.info</a>

Other cycling and MTB tips: [www.luzern.com/cycling](http://www.luzern.com/cycling)

## Golfing tips

Golf courses	Information
<b>Küssnacht am Rigi Golf Club</b> Küssnacht am Rigi Golf Club lies on an elevated plateau and offers glorious views of the Rigi, the entire pre-alpine chain and Lakes Zug and Lucerne.	<a href="http://www.gck.ch">www.gck.ch</a>
<b>Lucerne Golf Club</b> Founded in 1903, this is Switzerland's third-oldest club after Engadine and Montreux. The club moved to its current location on the Dietschberg in 1925 and opened an 18-hole course. It was modified a number of times in the ensuing years to keep pace with tastes.	<a href="http://www.golfsuisse.ch">www.golfsuisse.ch</a>
<b>Golf Sempachersee</b> Golf Sempachersee, the largest golf resort in Switzerland, boasts two 18-hole championship courses and is a member of the Leading Golf Courses organisation.	<a href="http://www.golf-sempachersee.ch">www.golf-sempachersee.ch</a>
<b>Engelberg-Titlis Golf Club</b> Playing on Engelberg's 18-hole course is an experience in two respects: the mountain panorama combines with the course's challenges to create a unique blend of sport and nature.	<a href="http://www.golfclub-engelberg.ch">www.golfclub-engelberg.ch</a>
<b>Andermatt Golf Course</b> This 18-hole golf course extends between Andermatt and Hospental. Commencing 2014 it is open to all owners of Andermatt Swiss Alps properties and hotel guests staying in Andermatt and its environs. The general public will be admitted from 2016.	<a href="http://www.ander-matt-swissalps.ch">www.ander-matt-swissalps.ch</a>

Other golfing tips: [www.luzern.com/golfing](http://www.luzern.com/golfing)



## SUSTAINABLE ACTIVITIES

The Lucerne - Lake Lucerne Region pursues a policy of sustainable tourism development. Lucerne Tourism is engaged in a range of projects aimed at creating and developing sustainable offerings. As an "Energy-City", Lucerne benefits from a number of advantages, including easy accessibility by public transport, short local distances and a modern infrastructure. Visitors to Central Switzerland have access to a unique natural resource, a rich heritage of local customs and an array of regional and local specialities and products.

**There is much to be discovered – here is a selection of ideas:**

### **Themed tours**

The themed city tour "Real Lucerne" reveals unknown aspects of Lucerne, while another tour focuses on the carnival and looks behind the scenes at this most typical of Lucerne's annual events.  
[www.luzern.com/citytours](http://www.luzern.com/citytours)

### **Myclimate Audio Adventure**

Lucerne's climate-themed audio trail takes visitors on a voyage of discovery into feats of valour, the use of water and climate protection.  
[www.luzern.com/myclimate](http://www.luzern.com/myclimate)

### **Lucerne weekly market**

The weekly food market held on both sides of the Reuss on Tuesday and Saturday mornings is a lively affair offering a huge array of fresh local produce.  
[www.luzern.com/markets](http://www.luzern.com/markets)

### **Weggis village**

Traditional farmhouses, lush meadows full of cherry and apple trees, splendid cows and the fragrance of Weggis roses – all waiting to be discovered on the Weggis circular trail. Individual tour and weekly guided stroll.  
[www.wvrt.ch](http://www.wvrt.ch)

### **UNESCO Biosphere Entlebuch**

No other region in Switzerland can match the variety of natural resources found in this 'wild west' region of Lucerne. A visit is twice as much fun in the world's first ever all-electric coach.  
[www.biospaere.ch](http://www.biospaere.ch) and [www.switzerland-explorer.ch](http://www.switzerland-explorer.ch)

### **Brunni 'Tickle Trail'**

Kneipp hydrotherapy at 1,860 metres: this barefoot trail around pretty Lake Hätzli above Engelberg promises thrills of a different sort.  
[www.luzern.com/water](http://www.luzern.com/water)

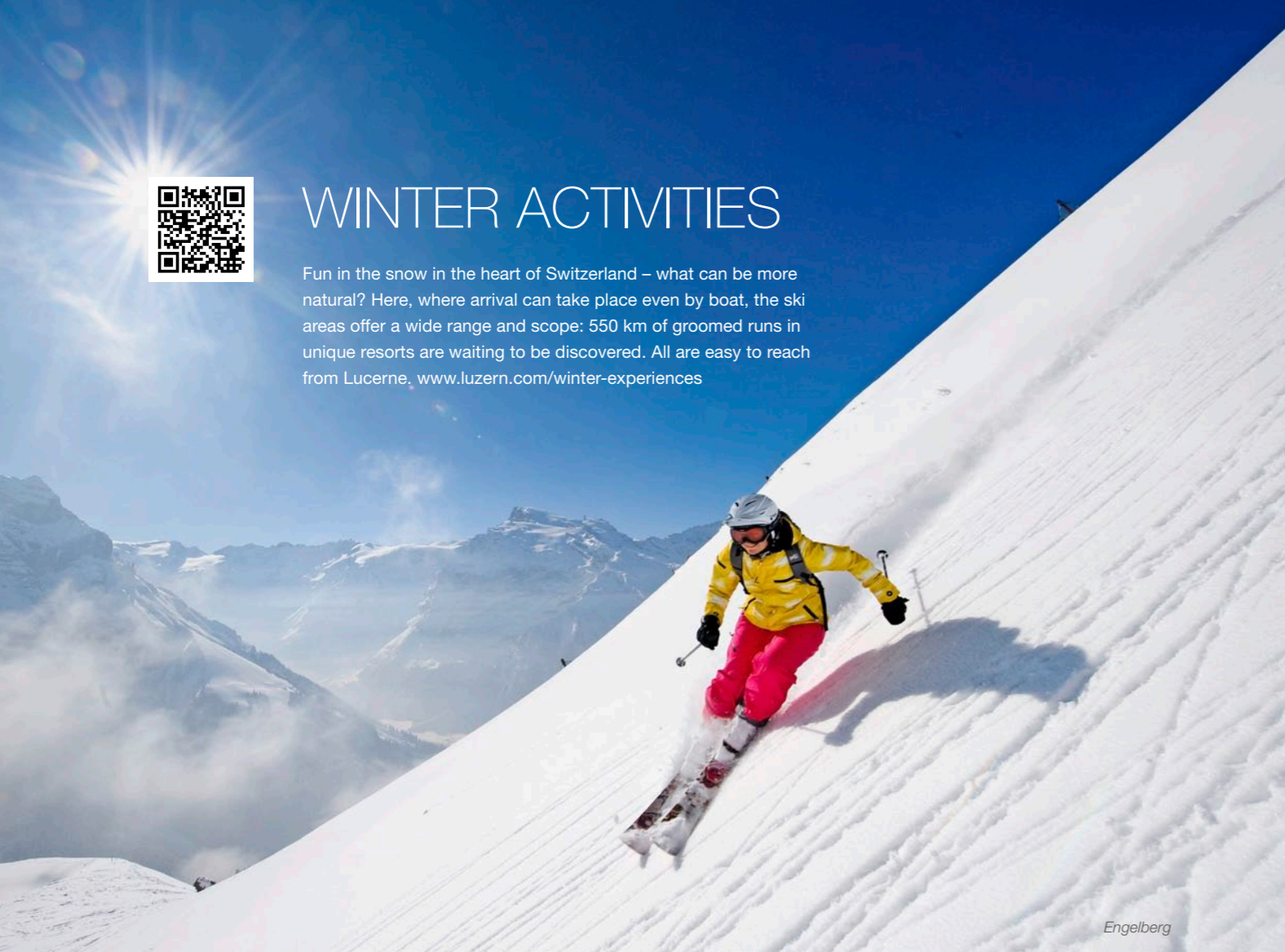
Visitors overnighing in the region receive the Lucerne-Lake Lucerne Region guest card free of charge. Its 70-plus special offers and discounts for cableways, mountain railways, museums and excursions are valid throughout the holiday area.  
[www.luzern.com/visitors-card](http://www.luzern.com/visitors-card)





# WINTER ACTIVITIES

Fun in the snow in the heart of Switzerland – what can be more natural? Here, where arrival can take place even by boat, the ski areas offer a wide range and scope: 550 km of groomed runs in unique resorts are waiting to be discovered. All are easy to reach from Lucerne. [www.luzern.com/winter-experiences](http://www.luzern.com/winter-experiences)



Engelberg



View from the Klewenalp

Resort altitude	Internet / telephone	Ski area altitude (in m)	No. of cableways/lifts	Ski runs in km (total)	Adventure playgrounds	Cross-country ski trails Classic (km)	Cross-country ski trails Skating (km)	Winter walking trails (km)	Snowshoe trails (km)	Sledge runs (km)
1 Melchsee-Fruitt 1920 m	<a href="http://www.melchsee-frutt.ch">www.melchsee-frutt.ch</a> +41 (0)41 669 70 60	1080 – 2255	14	32	1	15	15	12	37	8
2 Sörenberg 1166 m	<a href="http://www.soerenberg.ch">www.soerenberg.ch</a> +41 (0)41 488 11 85	1166 – 2350	17	53	1	35	35	35	15.6	6
3 Andermatt-Sedrun 1444 m	<a href="http://www.skiarena.ch">www.skiarena.ch</a> +41 (0)81 920 40 90	1444 – 2961	20	120	1	39	39	54	43	10.5
4 Klewenalp-Stockhütte 1600 m	<a href="http://www.klewenalp.ch">www.klewenalp.ch</a> +41 (0)41 624 66 00	1279 – 2001	13	40	-	-	-	9	3	9
5 Stoos 1300 m	<a href="http://www.stoos.ch">www.stoos.ch</a> +41 (0)41 818 08 08	1300 – 1935	8	35	1	10	10	16.5	15.4	2
6 Attinghausen-Brüsti 1525 m	<a href="http://www.attinghausen-tourismus.ch">www.attinghausen-tourismus.ch</a> +41 (0)41 870 14 61	1525 – 1600	1	4	-	-	-	1	3	-
7 Engelberg-Bannalp 1600 m	<a href="http://www.bannalp.ch">www.bannalp.ch</a> +41 (0)41 628 16 33	1600 – 2800	3	3	-	-	-	-	4	0.2
8 Biel-Kinzig 1630 m	<a href="http://www.biel-kinzigag.ch">www.biel-kinzigag.ch</a> +41 (0)41 870 26 35	1630 – 1930	3	7	-	-	-	7	7	-
9 Einsiedeln 960 m	<a href="http://www.einsiedeln-tourismus.ch">www.einsiedeln-tourismus.ch</a> +41 (0)55 418 44 88	900 – 1200	3	6	-	60	60	50	-	2
10 Engelberg-TITLIS   Brunnli   Fürenalp 1050 m	<a href="http://www.engelberg.ch">www.engelberg.ch</a> +41 (0)41 639 77 77	1050 – 3028	25	82	2	34	34	49	11	7
11 Flüelen-Eggberge 1447 m	<a href="http://www.eggberge.ch">www.eggberge.ch</a> +41 (0)41 870 15 49	1500 – 1600	1	8	-	-	-	3	3	-
12 Giswil-Mörialp 1350 m	<a href="http://www.moerialp.ch">www.moerialp.ch</a> +41 (0)41 675 22 28	1350 – 1850	6	14	-	-	-	6	6	2
13 Langis-Glaubenberg 1543 m	<a href="http://www.langis-glaubenberg.ch">www.langis-glaubenberg.ch</a> +41 (0)41 666 50 40	1340 – 1520	1	1.5	1	25	25	10	11.5	0.3
14 Marbach 871 m	<a href="http://www.marbachegg.ch">www.marbachegg.ch</a> +41 (0)34 493 33 88	881 – 1500	3	8	-	50	50	26	13	-
15 Mythen region 1050 m	<a href="http://www.mythenregion.ch">www.mythenregion.ch</a> +41 (0)41 811 18 01	1050 – 1593	15	50	1	5	5	36	10	5.3
16 Pilatus 2132 m	<a href="http://www.pilatus.ch">www.pilatus.ch</a> +41 (0)41 329 11 11	516 – 1416	3	-	-	-	-	15	20	9
17 Rigi 1800 m	<a href="http://www.rigi.ch">www.rigi.ch</a> +41 (0)41 399 87 87	1320 – 1660	7	9	-	14	14	35	5	10
18 Rothenthurm 960 m	<a href="http://www.neusell.ch">www.neusell.ch</a> +41 (0)41 838 11 61	960	1	8	-	25	25	8	3.8	-
19 Sattel-Hochstuckli 790 m	<a href="http://www.sattel-hochstuckli.ch">www.sattel-hochstuckli.ch</a> +41 (0)41 836 80 80	790 – 1600	6	14	1	-	-	5	-	3.5
20 Schattdorf-Haldi 1080 m	<a href="http://www.haldi-uri.ch">www.haldi-uri.ch</a> +41 (0)41 870 21 09	1350	1	3	-	-	-	7	10	2.5
21 Spiringen-Ratzi 1510 m	<a href="http://www.ratzi.ch">www.ratzi.ch</a> +41 (0)41 879 12 32	950 – 1840	2	4	-	-	-	4.2	4.2	-
22 St. Jakob-Gitschenen 1530 m	<a href="http://www.gitschenen.ch">www.gitschenen.ch</a> +41 (0)41 878 01 80	1600	1	5	-	-	4	3	3-4	-
23 Wirzwell 1227 m	<a href="http://www.wirzwell.ch">www.wirzwell.ch</a> +41 (0)41 628 23 94	1227 – 1579	7	5	-	-	-	7	32	7
24 Ybrig 1465 m	<a href="http://www.ybrig.ch">www.ybrig.ch</a> +41 (0)55 414 26 26	1030 – 1831	12	50	1	27	27	15	7	7



# LUZERN

## FACEBOOK

THE CITY. THE LAKE. THE MOUNTAINS.



Front cover: Chapel Bridge with Water Tower, Lucerne / Back cover: View from Mt. Pilatus over Lake Lucerne



Switzerland.  
get natural.

The essence of Switzerland.

Luzern Tourismus AG – Tourist Board | Bahnhofstrasse 3 | CH-6002 Lucerne  
Tel. +41 (0)41 227 17 17 | Fax +41 (0)41 227 17 18 | [luzern@luzern.com](mailto:luzern@luzern.com) | [www.luzern.com](http://www.luzern.com)