

Meeting planner 2016

Meeting locations in Eastern Switzerland



Inspiring. That's exactly how an event should be.

For us, your expectations and the challenges they represent are all part of our daily work because we want your congress, meeting, event or social activity to not only be successful but also become a lasting memory.



From left to right:
Andrea Götte, Project Manager Convention Bureau
Frank Bumann, Director St.Gallen-Bodensee Tourism
Karin Schwander, Congress & Event Organiser
Anja Geiger, Project Manager Convention Bureau

St.Gallen and Eastern Switzerland offer surprising and typical elements from our wonderful country. With our experienced team of experts, we offer full commitment and detailed local knowledge in the organisation of events. Whether it involves small or large, regional, national or international events – with us you will benefit from an efficient service that is truly «made to measure» and yet is still free of charge. It saves you time and delivers a lot of advantages.

When will we be able to welcome you here?

Your St.Gallen-Bodensee Convention Team

St.Gallen-Bodensee Convention

Bankgasse 9
CH-9001 St.Gallen
Tel. +41 (0)71 227 37 32
Fax +41 (0)71 227 37 67
congress@st.gallen-bodensee.ch
www.st.gallen-convention.ch

ST.GALLEN -

the charming, compact congress location with tremendous added value.

EASTERN SWITZERLAND -

the self-confident, self-deprecating event region with a surprising array of offers.

Imprint

Publisher: St.Gallen-Bodensee Convention, 9001 St.Gallen
Photo: kurzschluss photography gmbh, Damian Imhof, 9042 Speicher
Cover: Thies Wachter, 2013



Recommendable.

Whether it's a congress, meeting, event or social activity, we at St.Gallen-Bodensee Convention use our experience, local contacts and expertise to transform your personal wishes into individualised offers that turn events into something special.

OUT OF THE BOX

Eastern Switzerland lies outside Switzerland's usual meeting and incentive grounds and is an insider tip. After attending an event between Lake Constance and Säntis, your people will have a few new stories tell when they get home.

INNOVATION BROUGHT TO LIFE

Your event is to go down in corporate history as something surprisingly different. The service providers are open to new ideas and hungry to implement them. Pragmatic and efficient, they deliver a good price-performance ratio.

RELIABLE NETWORKS

The down-to-earth, solution-oriented people of Eastern Switzerland will help to put your ideas into practice with their know-how and reliability. Access to the local service providers and decision-makers is simple, and sustainable networks are rapidly established.

PLENTY OF AVAILABILITY

Eastern Switzerland is still an insider tip for event organisers. «Fully booked» is an expression that is almost unheard-of. Numerous alternatives and unexpectedly inspiring locations are just waiting to be discovered.



Added value. For congresses and more.

To ensure that an event is a success, everything has to be well thought-out. That takes ideas, efficient organisation and time. This is precisely where the St.Gallen-Bodensee Convention Bureau assists event organisers in the preparation and execution of their plans. Individually and free of charge, the team of events specialists collects services and bids from the wide range of providers in Eastern Switzerland.

ONLINE VENUE FINDER

This online tool is available at www.st.gallen-convention.ch for a rapid overview. Useful filter functions help you to find hotels and event locations.

PERSONAL ADVICE

Telephone advice and evaluation of the suitable locations for conventions, exhibitions, seminars and events of all kinds.

HOTEL ROOM MANAGEMENT

Administration and reservation of room allocations for events lasting several days, without any financial risk or effort for the event organiser.

BIDDING

The necessary bids for premises, transfers, give-aways, etc. are collected from a network of partners and made available in a package as a basis for decision-making.

SITE INSPECTION

Organisation of and support for inspections of possible hotels, event locations or supporting programmes.

PRESENCE

Provision of tourist information material. For larger events, the St. Gallen-Bodensee Convention Bureau also offers training packages for convention staff or presence at the venue.

CONGRESS DEVELOPMENT

Organisers of national and international congresses and conferences will find support with the development of business plans, concepts and customised bid dossiers.



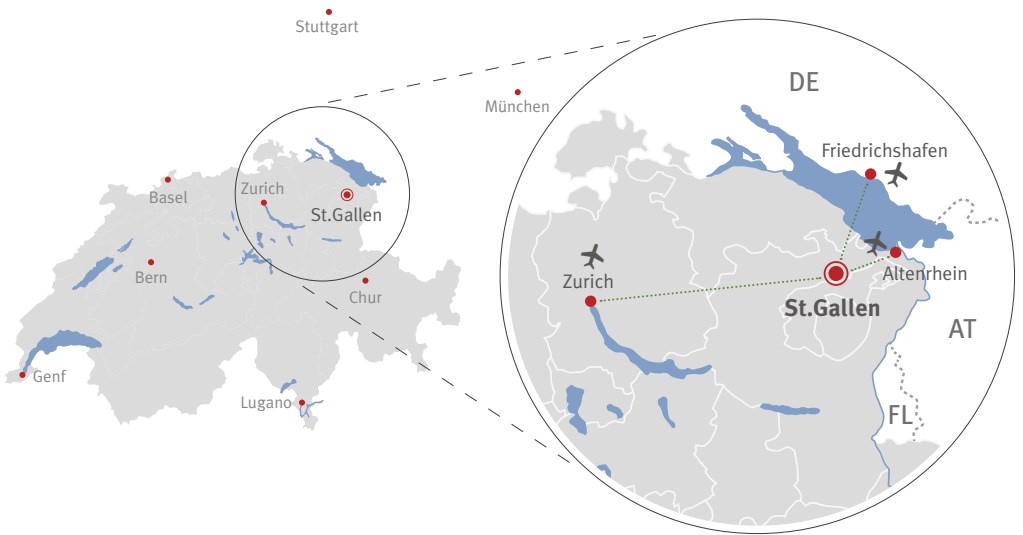
St.Gallen-Bodensee Convention - happy to help you. Individualized, personal, straightforward. Test our service on www.st.gallen-convention.ch



Short distances.

International congresses and conferences of varying magnitude, seminars in a castle and events in a Hundertwasser ambience: In the St.Gallen–Lake Constance region, at the point where the four countries of Switzerland, Germany, Austria and the Principality of Liechtenstein meet, every company and event organiser will find the perfect location for meetings of experts, advanced training courses and incentive trips.

The region is characterised by walking distances and transfers of less than an hour. Good rail and road links and easy access to the international airports of Zurich and Friedrichshafen right on the doorstep is the regional airport of St.Gallen Altenrhein–St.Gallen and Eastern Switzerland could not be in a better location.



St.Gallen	→ Zurich	→ Altenrhein	→ Friedrichshafen	→ Stuttgart	→ Munich
	60 min	20 min	60 min	150 min	150 min
	60 min	35 min	95 min	220 min	190 min

10 good reasons.

1. Switzerland offers economic, social, and political stability.
2. Eastern Switzerland lies in the centre of Europe and is bordered by three attractive countries: the Principality of Liechtenstein, Austria and Germany.
3. It takes just one hour by car or train to reach Zurich Airport.
4. Eastern Switzerland boasts extremely modern, multifunctional congress infrastructure and outstanding event venues.
5. An exciting range of seminar hotels is yours to choose from in Eastern Switzerland.
6. St.Gallen is continually investing in new congress and hotel complexes to ensure your success.
7. St.Gallen is a city known for its density of congress centres, hotels and event venues.
8. St.Gallen and its Abbey District (UNESCO World Heritage site) is one of Switzerland's most significant cities of culture.
9. Eastern Switzerland offers a variety of leisure programmes and excursion destinations from Lake Constance to the foothills of the Alps.
10. St.Gallen-Bodensee Convention will assist you with expert planning for your event – and at no extra charge!





Recommendable partners.

Bustransfer



Gebr. Ebnetter AG
St.Georgenstr. 160a
CH-9011 St.Gallen
T +41 71 222 88 31 / F +41 71 222 88 59
info@ebnetter-reisen.ch
www.ebnetter-reisen.ch

Team experiences



Abenteuer-Zeitreisen TOPAZ GmbH
Hauptstrasse 59
9053 Teufen
T +41 71 787 51 15 / F +41 71 787 51 20
info@zeitreisen.ch
www.zeitreisen.ch



Outivity GmbH
Feldstrasse 8
8890 Flums
T +41 81 740 47 77
www.outivity.ch
info@outivity.ch

Audiovisual providers



scandola light audio media gmbh
Gröblistrasse 18
9014 St.Gallen
T +41 71 279 10 90 / F +41 71 279 33 88
contact@scandola.ch
www.scandola.ch



Stagelight AG
GWZ Walke
9100 Herisau
T +41 71 353 30 80 / F +41 71 353 30 85
info@stagelight.ch
www.stagelight.ch

Recommendable partners.

Event service providers



marbet
Marion & Bettina Würth GmbH & Co KG, Künzelsau
Zweigniederlassung Rorschach
Churerstrasse 10
9400 Rorschach
T +41 44 913 91 02 / F +41 44 913 91 11
info.ch@marbet.com
www.marbet.com



MCI Schweiz AG
Schaffhauserstrasse 550
8052 Zürich
T +41 44 809 42 00 / F +41 44 809 42 01
zurich@mci-group.com
www.mci-group.com/schweiz.aspx



mosaik gmbh
Agentur für Kommunikation und Organisation
Martinsbruggstrasse 35
9016 St.Gallen
T +41 71 280 20 90
info@mosaik-agentur.ch
www.mosaik-agentur.ch



Unforgettable.

Surprise your guests or customers with a gift from eastern Switzerland. Choose a sweet treat or cloth accessory to make yours an event to remember.

Culinary delights



Freshly hand-made chocolate

Enchant your guests with chocolate. This freshly hand-made chocolate is available in boxes of various sizes and a number of different varieties.



Hampers for pleasure

A collection of gastronomic delights from eastern Switzerland. Sour cherry liqueur, Cornelian cherry jam and fresh chocolate.



Taster set

This taster set is refreshingly fruity. Hand-made white chocolate with raspberries and candied lemon peel. We recommend enjoying this with a sip of fruit liqueur.

Textiles



Fabulous textiles from St. Gallen

Present your guests with a cloth accessory from St. Gallen, the textile town. Items range from keyrings and iPhone cases to fabulous brooches and bracelets. All accessories are produced by well-known textiles firms in St. Gallen.

These and other products are available from the St.Gallen-Bodensee Convention Bureau. Ask us for a personal quote.

St.Gallen-Lake Constance	10
Appenzellerland	27
Heidiland	36
Principality of Liechtenstein	42
Schaffhauserland	44
Thurgau	48
Toggenburg	58

Event locations for more than 300 people	63
Event locations for 200 to 300 people	81
Event locations for 100 to 200 people	87
Event locations for up to 100 people	93

St.Gallen-Lake Constance	100
Appenzellerland	107
Heidiland	114
Schaffhauserland	118
Thurgau	120
Toggenburg	123
Principality of Liechtenstein	127
All of eastern Switzerland	129

Hotels

St.Gallen-Lake Constance



Radisson Blu Hotel, St.Gallen **★★★★ Superior**

123 rooms

St.Jakob-Strasse 55

9000 St.Gallen

www.radissonblu.de/hotel-st.gallen

Directly opposite the Olma exhibition and congress center and within a short walking distance from the Old Town, the Radisson Blu Hotel, St.Gallen is optimally situated. The hotel offers eight multifunctional conference rooms, all with natural daylight and equipped with standard technology. Experience Meetings by Radisson Blu is a concept that combines modern meeting rooms, connectivity and balanced nutrition. Whether a boardroom meeting, a major event or catering for up to 500 guests - the Radisson Blu Hotel, St.Gallen is the ideal partner for your event.



Room arrangements	Concert	U-Shape	Seminar	Banquet	Length x Width	Area m ²
Paris + Berlin + Oslo	200	58	120	150	20.4 x 10.9	251
Wien	24	–	–	–	7.75 x 5	39
Paris	80	30	40	50	11.8 x 10.9	124
Berlin	50	18	20	32	8.5 x 10.9	89
Oslo	24	12	14	16	7.75 x 5	39
London / Rom	12	–	–	–	7.5 x 3.25	25
Rom + London	40	20	24	32	7.5 x 6.5	54
St.Gallen	40	18	24	32	8 x 6.75	57
St.Gallen + Foyer	80	30	40	64	13.5 x 8	109
Separé	30	18	–	30	6.6 x 5.75	38





Einstein St.Gallen

Hotel Congress Spa ★★★★★ Superior

113 rooms

Berneggstrasse 2

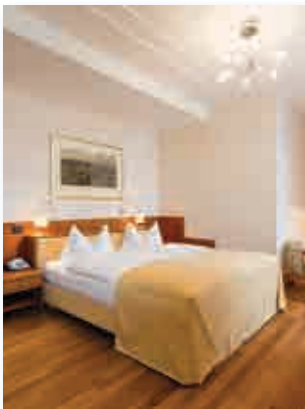
9000 St.Gallen

www.einstein.ch

Being the first house of the town, the Einstein St.Gallen offers 113 exquisite hotel rooms, culinary variety in two restaurants, an English Bar-Pub, a modern fitness park as well as hotel owned car parking. Hotel Einstein boasts a central location just 5 minutes' walk from the main rail station and has its own bus stop. Not only that, but it is right next door to the old town of St.Gallen. Come and enjoy car-free conferencing. 14 elegant conference rooms with natural light, state-of-the-art conference technology and a panoramic view over the old town combine with the stylish Einstein Hall to offer the ideal platform for key conferences, high-profile banquets, concerts and events.



Room arrangements	Concert	U-Shape	Seminar	Banquet	Length x Width	Area m ²
Einstein Saal (Foyer / Gallery)	420	50	160	240 (160)	19 x 18	342 (326)
Buchegg / Friedegg / Spiesegg	180	50	90	n.a.	25 x 9	225
Wienerberg / Rosenberg	120	40	64	n.a.	19 x 8,5	162
4 meeting rooms	60	20	32	n.a.	9,5 x 8,5	80
4 seminar rooms	35 – 60	16	18 – 26	n.a.	8 x 7,5	60
4 workshop rooms	n.a.	n.a.	12	n.a.	7 x 4	28
Boardroom	n.a.	n.a.	14	n.a.	8 x 8	64
Turmzimmer	n.a.	n.a.	n.a.	20	n.a.	35
Various banquet halls	n.a.	n.a.	n.a.	8 to 80	n.a.	12 – 90



Oberwaid Kurhaus & Medical Center ★★★★★ Superior

144 rooms

Rorschacher Strasse 311
Postfach
9016 St.Gallen
www.oberwaid.ch

Quiet, yet central, timeless and elegant: The Oberwaid is a great location for your seminars and celebrations.

Our personal and professional service as well as an excellent infrastructure guarantees the success of your event. Our facilities are ideal for seminars of all kinds, fully equipped with modern conference technology. All rooms feature natural daylight and offer stunning views over our own park and the Lake Constance.

Our conference packages provide full flexibility for your planning. For the special effect we can integrate offers of our medical center, our Tau Spa or our teaching kitchen into your event schedule. We are your partner and look forward to welcoming you.



Extras: Unique location within its own park overlooking Lake Constance, W-LAN throughout all areas free of charge, access to Tau Spa with indoor pool and fitness center, free parking, wheelchair accessible rooms and facilities

Room arrangements	Concert	U-Shape	Seminar	Banquet	Length x Width	Area m ²
Baldegg & Guggeien	122	39	72	60	15 x 17.2	132
Baldegg	65	27	45	30	10 x 9.2	92
Guggeien	27	16	18	–	5 x 8	40
Dr. Theodor Hahn	–	–	8	–	4.5 x 4	18
Sitzungszimmer	–	–	12	–	8 x 5	40





Hotel Säntispark ★★★★★

136 rooms

Haus Park 70 rooms

Haus Säntis 66 rooms

Wiesenbachstrasse 5

9030 Abtwil/St.Gallen

www.hotel-saentispark.ch

Delight in the new Hotel Säntispark – as diverse as life! Covering an area of 637 m², our conference centre boasts 9 rooms with flexible layouts providing enough space for any size of group. As well as state-of-the-art technology and outstanding infrastructure, 6 of these rooms give guests direct access to our park. We would be happy to pamper you with culinary delights in one of our two restaurants or at our lounge bar.

Extras: integrated Centre for Medicine & Sport, free and unlimited access to the 6,800 m² water park, 2,600 m² sauna complex and 690 m² fitness centre for hotel guests.



Room arrangements	Concert	U-Shape	Seminar	Banquet	Length x Width	Area m ²
Bodensee + Foyer	300	–	–	150	13.5 x 25	333
Bodensee (Ober- u. Untersee)	200	49	96	152	10 x 18.6	186
Obersee	100	26	40	–	10 x 10.3	103
Untersee	80	20	32	–	10 x 8.3	83
Appenzell Ausserrhoden	–	10	16	–	5.6 x 6.25	35
3 Gruppenräume	–	8	8	–	5.6 x 4.1	23
Appenzell	40	18	20	–	5.6 x 10.3	58
Graubünden	38	16	20	–	5.8 x 9.3	54.5
Glarus	–	–	–	–	5.8 x 5.6	32.5
Schwyz	30	14	–	–	4.5 x 8.3	38



Hotel Walhalla ★★★★

56 rooms

Bahnhofplatz
Poststrasse 27
9001 St.Gallen
www.hotelwalhalla.ch

Where are banquets and conferences to success.

Whether conferences, seminars or festive occasion? In Hotel Walhalla wait four rooms with 5 to 70 places on you. And here we hospitality above all else: A professional service operated during your food and your meeting are you with the most modern technical aids available. Consulting included. To ensure that your conference or your celebration is a resounding success.



Room arrangements	Concert	U-Shape	Seminar	Banquet	Length x Width	Area m²
Caroline	80	35	48	54	13.8 x 6.8	77
Club	50	18	20	36	6 x 6.7	40
Rosenzimmer	50	18	20	36	6 x 6.7	40
Max	30	10	10	18	5 x 6	33





Hotel Dom ★★★

41 rooms

Webergasse 22

9000 St.Gallen

www.hoteldom.ch

Hotel Dom lies in the heart of the Old Town just steps away from the Abbey District Unesco World heritage site. Thanks to its new design, the hotel was awarded the «Design & Lifestyle» category in 2011. It also distinguishes itself with a special employment concept. People with disabilities are employed and directed by a trained management team.

Extras: W-LAN, handicapped accessible



Room arrangements	Concert	U-Shape	Seminar	Banquet	Length x Width	Area m ²
Conference room	50	20	20	–	11 x 5.2	60
Restaurant	–	–	–	60	–	144
Discussion room	–	–	8	–	2.2 x 2.9	8.5



Hotel Metropol ★★★

32 rooms

Bahnhofplatz 3
9001 St.Gallen
www.hotel-metropol.ch

The charmingly renovated Metropol Hotel is situated directly opposite the main station of St.Gallen. Perhaps you are on a business trip, participating in one of the various conferences in the region, perhaps you are exhibitor at the Olma fair halls or you're just visiting some friends in the East part of Switzerland: You will feel right at home. 365 days a year.

Extras: free W-LAN, telephone, wheelchair accessible, dogs welcome



Room arrangements	Concert	U-Shape	Seminar	Banquet	Length x Width	Area m²
Meeting room	Number of persons, seating and table form facilities on request					22
Conference room	Number of persons, seating and table form facilities on request					45
Erststock restaurant	Number of persons, seating and table form facilities on request					170





Hotel Newstar ★★★

57 rooms

Breitfeldstrasse 9

9015 St.Gallen

www.newstar-hotel.ch

Conference hotel with restaurants/garden restaurant, bar and free parking in a central location with direct motorway/bus connections. Comfortably furnished rooms. Idyllic walking/forest roads, Gründenmoos sports facilities, multiplex-cinema Cine-dome, AFG Arena/Säntispark/Westcenter recreation/shopping centres and the industrial districts Gossau/Herisau are nearby.

Extras: Direct dialling, fax/internet connections (W-LAN free of charge), wheelchair accessible



Room arrangements	Concert	U-Shape	Seminar	Banquet	Length x Width	Area m ²
Vadian	100	40	50	80	11 x 14	154
Gallus	100	36	50	100	10.7 x 11.9	128
Otmar	50	20	25	50	5.95 x 10.82	64
Notker	50	20	25	50	5.95 x 10.77	64
Friedberg	40	15	25	35	6.27 x 7.25	48



Militärkantine

21 rooms

Militärkantine St.Gallen AG
 Kreuzbleicheweg 2
 9001 St.Gallen
www.militaerkantine.ch

Only 10 minutes on foot westward from the city centre, the Kreuzbleicheweg infuses St.Gallen with a cosmopolitan air thanks to its colourful bustle. Here, surrounded by chestnut trees, lies the Militärkantine, a unique timber-framed building that was built as officer's quarters in 1900 and today is a listed heritage building. The 21 spacious rooms with oriels, balcony and claw-foot bathtubs invite you to stay and relax. The hotel is easily accessible by bus and car, a large car park is available in front of the hotel. The two halls, the 110m² historical hall and the 70m² original kitchen can be hired for celebrations, business meetings and banquets. Your culinary needs are taken care of with daily fresh dishes from the hotel's own restaurant.



Room arrangements	Concert	U-Shape	Seminar	Banquet	Length x Width	Area m ²
Saal	100	45	60	100	13 x 8.5	110
alte Küche	50	27	36	50	10 x 6.5	68.5
Restaurant	-	-	-	80	-	162





Bio Schlosshotel Wartegg ★★★ Superior swiss historic hotels

25 rooms

von Blarer Weg 1
9404 Rorschacherberg
www.wartegg.ch

Present-day Schloss Wartegg, a castle restored according to ecological building criteria, looks back on an eventful 450-year history. The castle is located in a park of national importance. The restaurant offers exquisite, seasonal «Slow Food» dishes with many fresh products from the castle's own organic garden. The various rooms and large park provide the perfect setting for successful seminars, workshops and events.

Extras: Historic «Turquoise Bath», music room, library, large English-style park, terrace, playground, quiet room



Room arrangements	Concert	U-Shape	Seminar	Banquet	Length x Width	Area m ²
Seminar 1	30	10	24	20	9.45 x 6.25	59
Seminar 2	25	18	18	–	8.4 x 6.4	53
Seminar 3	10	8	10	–	5.05 x 5.7	29
Konzertsaal	140	30	30	–	17.2 x 6	103
Speisesaal	–	–	–	70	17.2 x 6	103



Hotel Mozart ★★★

35 rooms
 Hafenzentrum
 9400 Rorschach
www.mozart-rorschach.ch

Tranquility, space and flexibility are the main criteria for any successful seminar. Thanks to the personal atmosphere of our small hotel, we are able to fulfil your individual requests spontaneously and easily. The available spaces and technology are optimum and the coffee break and fresh Mozart cake are always a hit! Rorschach is not just a lovely harbour town, but also an ideal conference location on the lake.

Extras: W-LAN, idyllic summer terrace



Room arrangements	Concert	U-Shape	Seminar	Banquet	Length x Width	Area m ²
Amadeus I	50	25	30	28	12 x 5	60
Amadeus II	25	12	14	18	6 x 5	30
Seezimmer	-	-	-	14	9 x 3	27





Wartensee Schloss-Hotel

34 rooms

9404 Rorschacherberg

www.wartensee.ch

One of the special highlights of staying at Schloss Wartensee is its unique setting high above Lake Constance, surrounded by a spacious park with ponds and a labyrinth. At 561 m.a.s.l., the panorama view of Germany and Austria is most impressive. Our castle gardens and many areas within the castle are available for weddings, banquets and birthdays. Enjoy an elegant dinner or refreshing cocktails on our sunny terrace or in the Tower Bar with its historic backdrop and gorgeous view of Lake Constance.



Room arrangements	Concert	U-Shape	Seminar	Banquet	Length x Width	Area m ²
Schloss Saal	80	66/20	60	80	11 x 6.8	70
Blarer Saal	80	66/20	60	80	11 x 6.8	75
Pearsall	40	–	20	–	8 x 5	40
Gotische Stube	30	15	15	20	7 x 5	35
Chemineeraum	–	–	20	30	5 x 7	35
Kräuter Restaurant	–	–	56	56	11 x 6	67
Surprise Restaurant	–	–	50	50	10.5 x 5.5	57



Hotel Uzwil ★★★★★

43 rooms

Bahnhofstrasse 67
9240 Uzwil
www.hotel-uzwil.ch

At Hotel Uzwil, you will find everything you need for a successful event. With professionally-equipped meeting areas, welcoming accommodation, delicious food and first-class service all under one roof, a comfortable and relaxed stay is guaranteed. Our team is happy to offer you advice so that your event can be designed to meet your individual needs and wishes. Discover the versatility of our services and let yourself be enchanted by the unique character of our four-star business hotel in the heart of Uzwil.

Extras: free W-LAN, parking, access to fitness centre, luggage storage and grab&go corner.



Room arrangements	Concert	U-Shape	Seminar	Banquet	Length x Width	Area m²
Saal 1 + 2	70	24	30	64		88
Saal 1	60	24	30	50	10.5 x 6	63
Saal 2	20	–	–	12	5 x 5	25
Arven-Stübli	–	–	–	8	4 x 4	15
Toggenburger-Stübli	–	–	–	8	3.5 x 4.3	15
Uze-Stübli	–	–	–	4	3.5 x 3	11
Tabasco Bar	25	–	–	40	14 x 9	125





Hotel Wolfensberg ★★★

28 rooms

Wolfensberg

9113 Degersheim

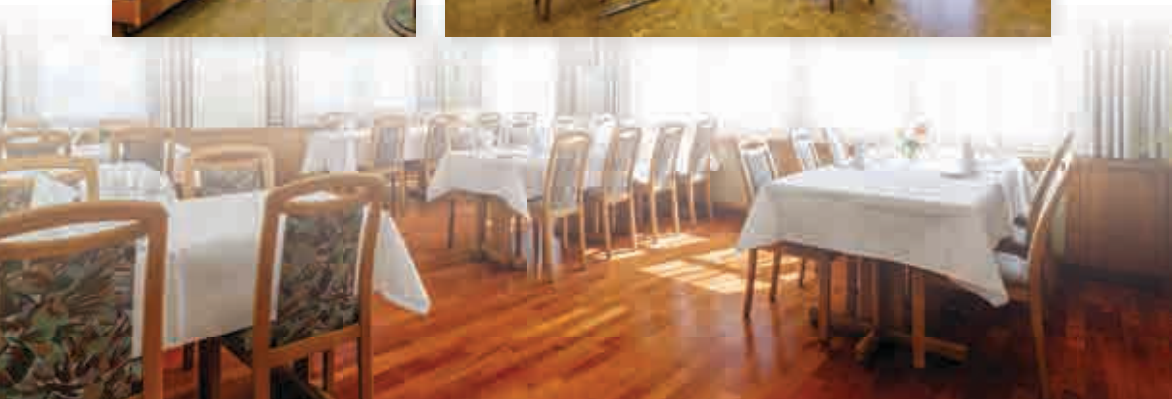
www.wolfensberg.ch

The «Wolfensberg», over 900 m above sea level, is our stage for tourism. The scenery features an idyllic landscape with a spectacular view. In the centre stands a comfortable resort for seminars, weddings and holiday travellers alike. A lovely 3-star hotel, fully furnished with reliable facilities and according to modern standards, offers individual service and refined cuisine.

Extras: modern technical equipment



Room arrangements	Concert	U-Shape	Seminar	Banquet	Length x Width	Area m ²
Grosser Saal	150	70	70	130	19 x 12	200
Bankettsaal 2+3	90	40	40	70	12 x 13	130
Saal 1	–	35	–	35	6 x 10	70
Saal 2	35	25	35	60	6 x 13	80
Saal 3	25	15	25	35	5 x 12	50
Plenum	30	20	30	–	8 x 8	80
Hotelsaal	25	18	18	40	8 x 8	70
Sitzung	–	8	8	–	4 x 4	18
Bibliothek	30	18	30	30	6.6 x 5.75	60
Gaststuben	–	–	–	50	–	–
Gartenrestaurant	–	–	–	180	–	–



More hotels in St.Gallen

Hotel Eastside ***

46 rooms
Langgasse
9008 St.Gallen
www.hoteleastside.ch



Sorell Hotel City Weissenstein ***

32 rooms
9000 St.Gallen
www.cityweissenstein.ch



Gallo Garni ***

24 rooms
St.Jakob-Strasse 62
9000 St.Gallen
www.hotel-gallo.ch



Vreni Giger's Jägerhof ***

19 rooms
Brühlbleichestrasse 11
9000 St.Gallen
www.jaegerhof.ch



Sporting **

19 rooms
Straubenzellstrasse 19
9014 St.Gallen
www.hotel-sporting.ch



Vadian Garni **

21 rooms
Gallusstrasse 36
9000 St.Gallen
www.hotel-vadian.com





More hotels in St.Gallen

Am Spisertor **

12 rooms
Moosbruggstrasse 1
9000 St.Gallen
www.spisertor.ch



One66

83 rooms
Alte Bildstrasse / Postfach
9015 St.Gallen
www.hotel-one66.ch



Elite Garni

25 rooms
Metzgergasse 9
9004 St.Gallen
www.hotel-elite.ch



Weisses Kreuz

14 rooms
Engelgasse 9
9000 St.Gallen



Am Ring

10 rooms
Unterer Graben 9
9000 St.Gallen
www.hotelamring.ch



Schwanen

9 rooms
Webergasse 23
9000 St.Gallen
www.schwanenpizza.ch



Hotels

Appenzellerland





Hotel Heiden ★★★★★

66 rooms

Seeallee 8

9410 Heiden

www.hotelheiden.ch

Hotel Heiden in Appenzell's foothills offers a modern ambience and a professional range of services coupled with the inspiring landscape of the Appenzell region and the lovely panoramic setting of the hotel. The seminar infrastructure available is technically advanced and can be implemented flexibly. The Kursaal located diagonally opposite to the hotel offers an ideal combination for events at Hotel Heiden. Your event will be accompanied by exquisite, palate-pleasing delicacies. As a place of relaxation, the extensive WELL&SEE Spa offers an additional, welcome source of energy. Every seminar day is bound to be a success. Hotel Heiden – seminars with a far-reaching view!

Extras: W-LAN, panorama indoor pool, wellness area, cosmetic treatments, massages



Room arrangements	Concert	U-Shape	Seminar	Banquet	Length x Width	Area m ²
Panoramasaal	–	–	–	150	12.1 x 11.6	160
Dunant 1–3	150	36	55	85	–	136
Dunant 1–2	80	30	40	45	16 x 7	112
Dunant 1	50	20	30	25	10 x 7	70
Dunant 3	–	–	10	–	6 x 4	24
Bodenseesaal	50	20	30	–	10 x 7	106
Gourmetstübli	30	–	–	20	9 x 4	36



Hotel Herisau ★★★ Superior Q

33 rooms

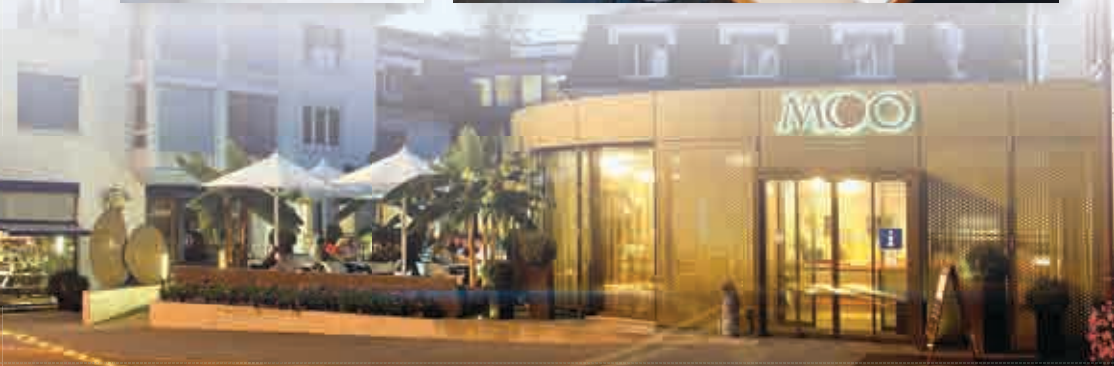
Bahnhofstrasse 14
9100 Herisau
www.hotelherisau.ch

Give your inspiration the perfect setting. Take advantage of our special rates for seminars with up to 80 participants, business meetings and visitors to the St.Gallen trade fair. We have three flexible seminar rooms ranging from 30 to 185 sq m and three conference rooms with natural light, state-of-the-art technology and service included. Outstanding seasonal cuisine fresh from the market thrills the senses at MOO, our in-house restaurant and winner of a Best of Swiss Gastro 2014 award.

Extras: W-LAN, wheelchair accessible rooms, fitness centre, sauna, whirlpool



Room arrangements	Concert	U-Shape	Seminar	Banquet	Length x Width	Area m ²
Herisau	50	28	40	50	11 x 6.5	70
Hundwil	25	10	18	20	7 x 6.5	45
Urnäsch	40	20	30	40	–	70
Herisau/Hundwil	80	–	60	75	18 x 6.5	115



Gasthaus Krone Speicher ★★★ Superior

12 rooms

Hauptstrasse 34

9042 Speicher

www.krone-speicher.ch

Following comprehensive remodelling in the spring of 2015, the Krone Speicher now exudes new charm. The hotel offers bright, modern rooms, cosy lounges on the first floor, a café and a seminar room equipped with the latest technology that is second to none. The beautifully renovated wine cellar will be of particular interest to connoisseurs of the grape. Art and culture are accorded great importance in this beautiful, historic establishment.



Room arrangements	Concert	U-Shape	Seminar	Banquet	Length x Width	Area m ²
Meeting room	60	16	25	32	9.5 x 8.5	83



Säntis - das Hotel ★★★

68 rooms

Säntis-das Hotel
 c/o Säntis-Schwebbahn
 9107 Schwägalp
 www.saentisbahn.ch

«Säntis – das Hotel»: Nestling in one of Europe's most beautiful mountain landscapes, our new hotel is located on the Schwägalp. Comfortably furnished rooms over three floors offer a quiet and relaxing night's sleep. In the wellness zone, you can escape from your everyday worries or relax after the mental exertion of your seminar. Enjoy typical regional dishes in the restaurant with its wonderful sun terrace. The seminar and banqueting rooms offer modern infrastructure, coupled with top-notch service. The Säntis Event Team will be happy to advise you and undertake the organisation of your event on Schwägalp and Säntis.



Room arrangement	Concert	U-Shape	Seminar	Banquet	Length x Width	Area m²
Hungenbüehl 1-3	172	42	72	100	–	168
Hungenbüehl 1&2	108	30	30	60	–	112
Hungenbüehl 1	46	19	19	20	–	56
Hungenbüehl 2	46	19	19	20	–	56
Hungenbüehl 3	46	19	19	20	–	56
Gruppenräume 1-4	–	–	–	60	–	30
Restaurant Schwägalp	–	–	–	110	–	–
Schwingerstobe	–	–	–	70	–	–
Schwägalpstobe	–	–	–	60	–	–



Romantik Hotel Säntis ★★★★★

36 rooms

Landsgemeindeplatz 3

9050 Appenzell

www.saentis-appenzell.ch

Successful development depends on the best care in the right atmosphere. Seminarium means «school of plants». The ancient Romans knew very well that to achieve successful progress you need to be well looked after in a favourable atmosphere. The Romantik Hotel Säntis possesses a totally modern infrastructure. We are fully equipped for meetings and conferences.

Extras: W-LAN, direct dial telephone, fax/modem connections, solarium, sauna



Room arrangements	Concert	U-Shape	Seminar	Banquet	Length x Width	Area m ²
Säntis	120	40	80	120	14 x 8	110
Hoher Kasten	40	20	32	40	9 x 6.5	60
Ebenalp	10	6	8	10	5.75 x 4	23
Kronberg	10	6	8	10	5.75 x 4	23
Ebenalp/Kronberg	30	14	20	30	8 x 5.75	46



Hotel Hecht Appenzell ★★★

38 rooms

Hauptgasse 7-9

9050 Appenzell

www.hecht-appenzell.ch

In the historic pedestrian zone in the centre of Appenzell, we promise you heartfelt and sincere hospitality. The Hotel Hecht Appenzell has large, high conference rooms filled with natural light and modern technology. Thanks to our «hotel guests only» concept, our meeting rooms and our team of employees are there exclusively for you!

Extras: W-LAN, modem connection, lots of natural light



Room arrangements	Concert	U-Shape	Seminar	Banquet	Length x Width	Area m²
Fähnern	100	40	60	120	11.1 x 10.45	116
Kamor	100	30	50	100	10 x 10	100
Fähnern/Kamor	200	70	110	220	21.8 x 10	218
Schwende	-	8	-	-	5.3 x 5.4	28
Sitter	-	10	-	-	4.15 x 6.86	28



Swissdreamshotel Walzenhausen ★★★

70 rooms

Dorf 45

9428 Walzenhausen

www.hotel-walzenhausen.ch

For seminars with inspiring ideas in creative surroundings and seminars with style, put the Panorama Hotel Walzenhausen in charge to make your team successful and your friends happy. Check out our special seminar and event packages. This is where your message will be heard! Take a break and find new ideas! Ask us, we are at your service!

Extras: W-LAN, modem connection, direct dial telephone, kettles with tea and coffee supplies, all rooms with lift access



Room arrangements	Concert	U-Shape	Seminar	Banquet	Length x Width	Area m ²
Festsaal	150	40	60	110	16 x 9	144
Konferenz	45	18	25	30	7,5 x 5,2	40
Panorama	40	20	25	–	6,5 x 6,8	44
Gruppenraum 1	–	–	–	–	3,5 x 5	18
Gruppenraum 2	–	–	–	–	4 x 5,5	22



Hotel Idyll Gais

27 rooms

9056 Gais

www.idyll-gais.ch

The idyllically situated Appenzellerhaus helps you forget the daily grind. And opens up a wider view. An excellent, flexible infrastructure awaits you in our bright seminar and conference rooms. Group work can be carried out in the antique salons and on the sunny garden terraces. The rooms offer a cosy, tranquil atmosphere. Our creative restaurant team will treat you to delicious, predominantly dishes out of regional ingredients. The optimal criteria for your seminar and warm hospitality await you just 15 minutes away from St.Gallen. We can't wait to welcome you!



Room arrangements	Concert	U-Shape	Seminar	Banquet	Length x Width	Area m ²
Hirschberg	70	32	32	50	11 x 8.2	90
Sommersberg Pavillon	70	30	30	40	8,9 x 8,9	80
Gäbris	20	16	16	25	6 x 6,4	38
Appenzeller Stübli	–	6	6	20	8 x 3	24
Wintergarten	10	–	10	10	5,5 x 3,8	20



Hotels

Heidiland



Grand Resort Bad Ragaz ★★★★★ THE LEADING HOTELS OF THE WORLD

267 rooms
 7310 Bad Ragaz
 www.resortragaz.ch

The beautiful setting in Bad Ragaz, breathtaking view of the nearby «Bergfürsten» mountains and an experienced event team that combines inspiration and savoir vivre to create the highest level of hospitality – these are the elements that make your event at the Grand Resort Bad Ragaz absolutely unique. Whether it is an impressive anniversary celebration, stimulating meetings or intensive seminars, flexible room plans for up to 280 people are possible thanks to the multifunctional interior design. Every event is planned individually for you, with accompanying programmes selected carefully and assistance from us from A to Z so that your event will be an unforgettable experience.



Room arrangements	Concert	U-Shape	Seminar	Banquet	Length x Width	Area m²
Bernhard Simon Saal A+B	280	62	176	240	26 x 13,9	362
Bernhard Simon Saal A	110	36	70	140	14,1 x 13,9	196
Bernhard Simon Saal B	80	28	54	112	11,9 x 13,9	165
Rainer Maria Rilke Saal A+B	70	30	48	60	11,2 x 8,2	91
Rainer Maria Rilke Saal A oder B	35	15	24	32	5,6 x 8,2	45
Johanna Spyri Saal A+B	70	30	–	–	11,2 x 8,2	91
Johanna Spyri Saal A oder B	35	15	–	–	5,6 x 8,2	45
Board Room - 18 Personen	–	–	–	–	8,2 x 8,2	69
Victor Hugo Lounge- 10 - 14 Personen	–	–	–	–	2,3 x 4,3	89





Sorell Hotel Tamina ★★★★★

50 rooms

Am Platz 3

7310 Bad Ragaz

www.hoteltamina.ch

The Sorell Hotel Tamina is situated in the heart of the charming holiday destination Bad Ragaz. Recent complete renovations have given the hotel a new polish and shine. A linear, simple design and natural materials create a genuine atmosphere of well-being, while the picturesque setting of the Grisons Maienfeld region ensures that ideas and visions emerge spontaneously. Are you looking for the right place to hold a seminar, meeting or conference? The Sorell Hotel Tamina offers you the optimal setting, located just one hour from Zurich and St.Gallen and boasting modern meeting rooms and equipment.



Room arrangements	Concert	U-Shape	Seminar	Banquet	Length x Width	Area m ²
Locanda 2	30	16	16	16	5 x 8	40
Locanda 3	15	10	10	10	5 x 7	35
Locanda 1+2	80	28	28	42	–	88
Locanda 2+3	42	28	30	34	–	75
Locanda 1–3	100	68	50	72	–	128
Meetingraum 1	30	13	15	16	7 x 4.5	32
Meetingraum 2	27	9	9	25	7 x 4.5	32
Meetingraum 1+2	54	32	30	32	14 x 4.5	63
Boardroom	–	–	14	–	5 x 8	40



Lofthotel ★★★ Q

19 rooms
 alte Spinnerei
 8877 Murg am Walensee
 www.lofthotel.ch

A passion for detail, creativity and a great deal of hard work have transformed this listed spinning mill on the Walensee into a meeting place. At its heart is the lofthotel, where sustainability and maintaining links to its industrial past are just as important as hospitality with a personal touch. Unique seminar rooms, a tennis/event hall, generous loft rooms, a fitness/wellness zone with views over the countryside, two restaurants on the lake with their own pier offering creative, culinary-based activities (cooking as a team, wine tasting, sensory parcours, etc.), crafts, sport, culture and nature – the old mill is an innovative space for your event or seminar.



Room arrangements	Concert	U-Shape	Seminar	Banquet	Length x Width	Area m ²
Eventhalle	250	–	250	250	18 x 35	630
Aula	60	25	40	–	6.9 x 26.9	186
Fitness	40	27	24	–	4 x 10	40
Galerie	50	34	48	–	4.5 x 16	72
Seminar	24	15	18	–	4.5 x 8	36
sagisteg	100	–	60	90	–	200
Loftsuite 5.3	–	–	18	18	–	330
Meetingraum	–	–	4	–	3.5 x 3.5	12



Hotel Cristal Flumserberg ★★★

29 rooms

Tannenboden

8898 Flumserberg

www.cristal-flumserberg.ch

The stylishly renovated Hotel Cristal Flumserberg is centrally located in Tannenboden, just four minutes on foot from the Maschenkamm cable-car station. The ski piste and the first lift are situated right next to the hotel. Each room features a shower/WC, flat-screen TV and free W-LAN. Two seminar rooms with modern conference technology are available for seminars and meetings and offer free Internet and impressive views of the Alvier mountain chain. The hotel is the ideal starting point for a wide variety of accompanying programmes such as dogsled tours, igloo building, outdoor team-building events and local attractions like the unique «Climber» climbing wall and the «Floomzer» summer toboggan run.



Room arrangements	Concert	U-Shape	Seminar	Banquet	Length x Width	Area m ²
1 Stein	50	24	32	–	14,4 x 4,9	70
2 Ender	60	30	42	–	11 x 7.20	80
Grossraum	80	38	60	–	–	150

All rooms are equipped with the following technology: flipchart, moderator's case, digital projector, screen, W-LAN, pinboards, laptop upon request



Swiss Heidi Hotel ★★★

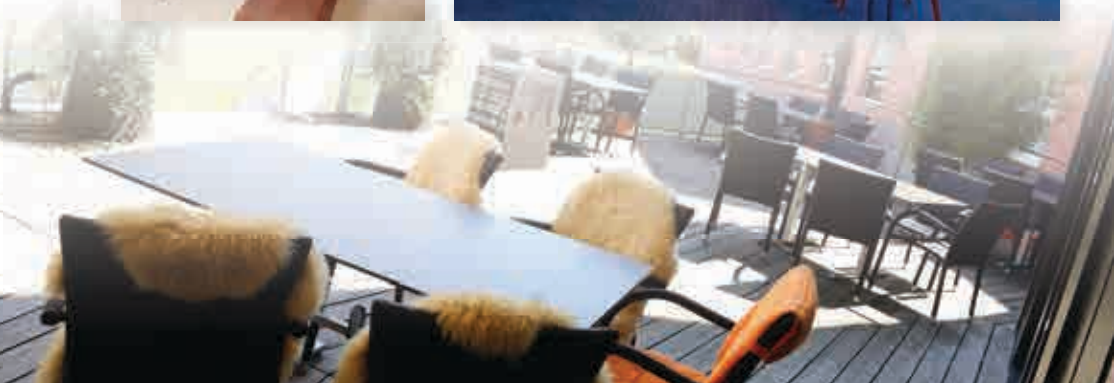
85 rooms
 Werkhofstrasse 1
 7304 Maienfeld-Graubünden
 www.swissheidihotel.ch

The light and airy Swiss Heidi Hotel located in the Grisons region is a hub for seminars and conferences. The 81 rooms and four suites are furnished functionally and afford a modern ambience. The bistro and garden terrace with a touch of Mediterranean flair and the spacious garden offer sun, fresh air and rejuvenation. The hotel is ideally situated near the exit for Maienfeld. The bright seminar rooms of various sizes provide the perfect setting and ensure that every meeting lives up to the most ambitious objectives.

Extras: Special offers for golfers. Traditional Eggtockel wine cellar. Free: parking, standard technology incl. projector, high-speed wireless Internet in all rooms and meeting areas.

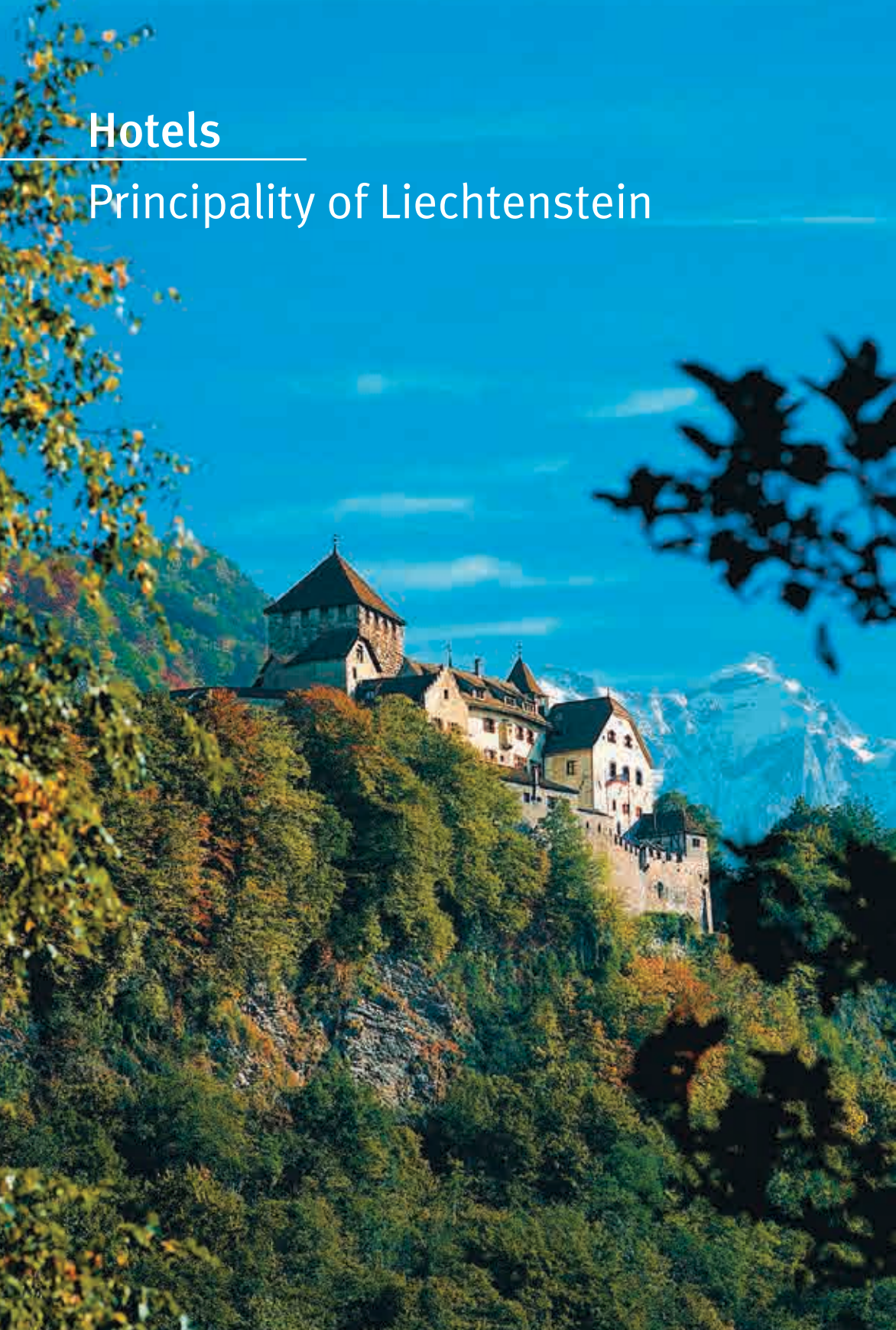


Room arrangements	Concert	U-Shape	Seminar	Banquet	Length x Width	Area m ²
Gipfelstürmer	130	50	100	80	14.2 x 14.2	200
Vilan/Guscha	56	30	40	–	7.4 x 13.4	100
Guscha/Gonzen	56	28	40	–	15.7 x 6.1	91
Heidi	50	25	45	–	11.7 x 6.4	75
Vilan	26	16	18	–	7.6 x 6.5	50
Guscha	30	18	18	–	8.4 x 5.9	20
Pizol	26	14	14	–	6.4 x 6.3	40
Gonzen	34	16	18	–	6.3 x 7.3	45
Calanda	18	–	9	–	6.3 x 3.2	20
Gir	16	10	12	80	6.6 x 5.7	37
Panorama	–	–	–	100	Rund-sicht	200



Hotels

Principality of Liechtenstein



Hotel Meierhof ★★★★★

43 rooms
 Meierhofstrasse 15
 FL- 9495 Triesen
 www.meierhof.li

A family-operated 4-star business hotel with 43 rooms and a lovely view of the Swiss Alps. Centrally located in Triesen, in the heart of Liechtenstein. Five-minute drive from the centre of Vaduz. Our seminar room offers ample space for large and small conferences. Lots of natural light and a welcoming atmosphere make this the ideal spot to develop creative ideas concerning business, social and cultural issues. Our seminar room is equipped with the latest technology and free W-LAN.

Extras: Meierhof gastronomy: restaurant, brasserie and bar. Free parking garage and free W-LAN throughout the hotel.



Room arrangements	Concert	U-Shape	Seminar	Banquet	Length x Width	Area m²
Seminarraum	85	30	40	30	–	100
Stübli	–	–	–	10	–	12
St. Elsa	–	–	–	12	–	15



Hotels

Schaffhauserland



arcona LIVING SCHAFFHAUSEN ★★★★★

130 rooms
 Bleicheplatz 1
 8201 Schaffhausen
www.schaffhausen.arcona.ch

The arcona LIVING SCHAFFHAUSEN conference hotel, part of the arcona HOTELS & RESORTS Group, was opened at the end of 2014.

Just 40 minutes from Zurich and very near to the rail station. The hotel offers 130 highly modern rooms and apartments, the «Weinwirtschaft» lounge and restaurant with show kitchen and sun terrace, a bar, and direct access to the neighbouring 1,200 m2 asia spa. The generous conference space welcomes you with 5 event and function rooms plus 2 board rooms across an area of 500 m2, offering space for up to 340 people. Contemporary interior design, cutting-edge technology, natural light and professional conference support ensure that your event will be a success. There is also a car park with direct access to the hotel available to guests (for an additional charge).



Room arrangements	Concert	U-Shape	Seminar	Banquet	Length x Width	Area m²
Bleiche I-V	340	–	120	220	27.39 x 10.85	300
Bleiche I	90	30	30	40	11.93 x 8.10	92.76
Bleiche II	90	30	30	40	10.70 x 8.62	92.32
Bleiche III	16	8	8	10	4.36 x 4.57	19.93
Bleiche IV	25	12	10	10	6.47 x 4.57	29.57
Bleiche III+IV	45	20	20	20	10.85 x 4.57	49.58
Bleiche V	50	24	20	20	10.59 x 6.10	64.60
Boardroom Munot 1	16	8	8	10	5.43 x 3.42	18.75
Boardroom Munot 2	16	8	8	10	5.43 x 3.42	18.75

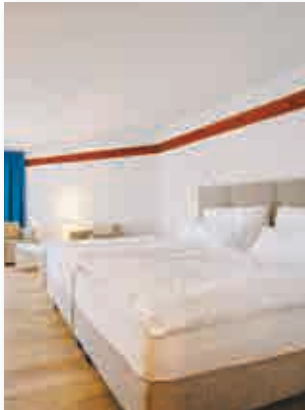


Hotel Chlosterhof Stein am Rhein ★★★★★

67 rooms

Oehningerstrasse 2
8260 Stein am Rhein
www.chlosterhof.ch

Welcome to Hotel Chlosterhof, one of the most beautiful hotels in Switzerland. This 4-star oasis, situated directly on lower Lake Constance and the River Rhine, guarantees an unforgettable stay. It has 67 hotel rooms and suites, a casual and gourmet restaurant, hotel bar, swimming pool, sauna and fitness room, and its own underground garage. At Hotel Chlosterhof, your conference is sure to be a success. There are 9 seminar and groups rooms for up to 220 people with natural light, many with air-conditioning, and all with cutting-edge seminar technology available for you. Our experienced team will assist you with precise planning beforehand and offers you personal care during your event.



Room arrangements	Concert	U-Shape	Seminar	Banquet	Length x Width	Area m ²
Einstein	120	30	80	98	13 x 13	183
Sokrates	70	–	15	–	7 x 10	72
Einstein-Sokrates	220	38	120	160	21 x 12	255
Sokrates-Kant	120	26	80	60	10 x 12	122
Einstein-Sokrates-Kant	220	30	80	180	27 x 13	305
Le Rhin	50	16	18	27	7 x 8	59
Le Rhin-Le Jardinère	60	28	35	50	13 x 8	102
Helferei 2	30	12	18	–	7 x 8	53
Helferei 1,3+4	–	6–14	–	–	–	18–26



Sorell Hotel Rüden ★★★

30 rooms

Oberstadt 20

8201 Schaffhausen

www.rueden.ch

The Sorell Hotel Rüden is a beautiful historic hotel in Schaffhausen's old town, in close proximity to the railway station. It offers sophisticated seminar rooms and a splendid guildhall that is suitable for banquets, impressive presentations and meetings. The event areas feature elegant parquet flooring, stucco ceilings, constant natural light and all the technological equipment you need. The hotel rooms are tastefully furnished and very quiet. The hotel has excellent public transportation connections. The nearby Herrenacker parking garage is available for guests arriving by car.



Room arrangements	Concert	U-Shape	Seminar	Banquet	Length x Width	Area m ²
Plenum	64	24	43	24	9 x 7	76
Seminarsaal	34	16	16	16	4 x 8	40
Gruppenraum1	–	–	12	12	5 x 7	35
Gruppenraum2	–	–	12	12	5 x 7	35
Kuppelraum	32	16	20	20	4 x 10	45
Zunftsaal	112	40	75	80	9 x 14	135
Sitzungszimmer	12	6	8	8	6 x 4,5	27



Hotels

Thurgau



Wellnesshotel Golf Panorama **★★★★ Superior**

55 rooms

Golfpanorama 6
8564 Lipperswil
[www.golfpanorama.ch/
golfpanorama](http://www.golfpanorama.ch/golfpanorama)

Meetings and wellness: Enjoy panoramic views of the Swiss Alps and the Lipperswil golf course from our wellness and seminar hotel. Hold meetings in absolute tranquillity and idyllic surroundings with outstanding infrastructure and service. Not only those seeking respite from their normal routine will find the ideal spot here to regain strength and energy. Every guest will encounter a personal relaxation paradise at the new 4-star Wellnesshotel Golf Panorama. Discover our sport and relaxation packages and combine your seminar with a wellness experience!

Extras: Attractive seminar packages and activity programmes for movement and relaxation, 2000 m² wellness facility with saunas, swimming pool, fitness and treatment rooms



Room arrangements	Concert	U-Shape	Seminar	Banquet	Length x Width	Area m ²
Meeting 1	20	14	16	–	8 x 4	33
Meeting 2	20	14	16	–	8 x 4	33
Meeting 1+2	40	19	24	–	8 x 8	66
Meeting 025	32	18	24	16	6,2 x 6,8	42
Meeting 026	24	14	16	16	4,4 x 6,8	30
Meeting 027	56	22	40	–	10 x 8	80
Festsaal	200	40	60	144	26,5 x 9	238



Hotel Bad Horn ★★★★ Superior

67 rooms

Seestrasse 36

9326 Horn

www.badhorn.ch

Bad Horn is a nautically-themed Hotel directly bordering the Bodensee. We proudly announce the hotel's new addition, the Emerald-Water-World-Spa, an oasis for health and vitality. We offer inspiration-stimulating, lake-view seminar rooms of varying sizes equipped with modern communication technology. For unique events take a cruise on our exclusive motor-yacht, Emily. Dining in style is possible within our two hotel restaurants. And, if navigating for the perfect spot to 'drop anchor' and enjoy a cocktail, enjoy lounging in either our star-lit Faro Bar or waterfront See Lounge.

Extras: Breathtaking location directly bordering the lake 1500m² wellness quarters, including spa, pool, whirlpool and gym facilities, 130 free parking spots, W-LAN



Room arrangements	Concert	U-Shape	Seminar	Banquet	Length x Width	Area m ²
Saal 1+3	200	–	120	200	19 x 15	280
Saal 1+3	100	–	60	80	17 x 7.2	135
Saal 2+4	80	–	60	70	15 x 7.2	110
Seminar 1	–	–	10	–	9 x 4	30
Seminar 2+3	80	30	60	–	10 x 13	130
Seminar 1,2+3	100	–	70	–	12 x 13	160
Seminar 5	–	–	8	–	5 x 4.5	24
Seminar 6	–	–	8	–	5 x 4.5	24
Seminar 5+6	–	20	20	–	10 x 4.5	48



Park-Hotel Inseli ★★★★★

39 rooms

Inselstrasse 6

8590 Romanshorn

www.hotelinseli.ch

Welcome to the «Inseli». Lying directly on Lake Constance in the grounds of Romanshorn Park, our hotel is the ideal location for seminars and workshops. The flexible room arrangements, with lots of natural light, offer diverse possibilities for training sessions, discussions and brainstorming. All 39 comfortably furnished rooms, some with a view of the park and lake, have Internet access. Hotel guests may use the whirlpool, sauna and fitness room freely as well. We will spoil you with fresh fish from Lake Constance, regional dishes and seasonal specialities. Put the finishing touch on your day in our bar.

Extras: Panorama restaurant, sunny terrace, seminar infrastructure, natural light, analogue and public W-LAN



Room arrangements	Concert	U-Shape	Seminar	Banquet	Length x Width	Area m ²
Schloss-Hydrel-Saal	150	36	50	120	–	145
Schloss-Saal	85	24	25	60	–	90
Schlossparkstube	50	18	20	44	–	58



Kartause Ittingen ★★★ Superior

68 rooms

8532 Warth bei Frauenfeld

www.kartause.ch

The historic buildings of the Ittingen Carthusian Monastery have been restored over time and tastefully expanded with modern architecture and contemporary comfort. This modern seminar centre blends perfectly with its peaceful, beautiful setting – the ideal conditions for intensive training and inspired encounters. A total of 26 rooms are available for conferences and banquets. Two hotels with 68 comfortable rooms ensure a pleasant night's sleep. Whether you have a small group or several hundred people, we will organise your event with the same consistency and attention to detail.

Extras: Abbey Shop, wine tasting, make your own cheese, the exhibits of the Art Collection of the Canton Thurgau and the Ittingen Muesum, rose garden



Room arrangements	Concert	U-Shape	Seminar	Banquet	Length x Width	Area m ²
Remise	450	60	180	350	22.8 x 16.1	367
Obere Aula	110	42	75	–	16 x 8.5	136
Untere Aula	120	36	75	–	14.5 x 7.2	104
Firstbühne	36	20	30	–	10.5 x 5.35	56
Kurszimmer 1	60	22	36	–	8 x 10.5	84
Kurszimmer 2	52	20	30	–	8.4 x 7.8	65,5
Kurszimmer 3 / 4	50	15	24	–	7.8 x 6.4	50
13 Gruppenräume	15–40	10–16	6–16	–	–	9,3 – 39,6
5 Banketträume	n.a.	n.a.	n.a.	32–160	–	164



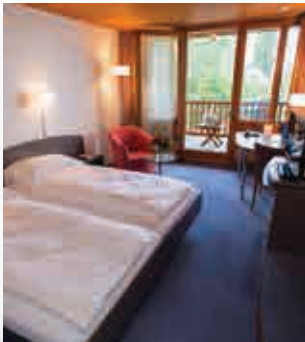
Seehotel Schiff ★★★

18 rooms
 Seestrasse 4
 8268 Mannenbach-Salenstein
 www.seehotel.ch

Are you looking for a truly remarkable location to hold your seminar or course? Then Seehotel Schiff is the place for you. It is situated so close to Lake Unter that the waves lap the front of the hotel. The expansive body of water, peaceful green nature, and mild climate create an atmosphere that is absolutely unique. It is perfectly suited to fostering concentration, enabling encounters, stimulating exchange and giving birth to visions. The hospitality of the Seehotel and the buildings themselves is particularly inviting. The staff are so warm, professional, and attentive that everyone feels at home here immediately. Variable, bright seminar rooms with all the modern infrastructure you could wish for, 18 rooms with balconies facing the lake, a lakeside restaurant with a well-stocked wine cellar as well as three lakeside terraces and a private beach ensure that all participants will be raving about your event here for a long time to come.



Room arrangements	Concert	U-Shape	Seminar	Banquet	Length x Width	Area m ²
Plenum	50	20	33	32	12 x 6	75
Plenum + GZ 2 + GZ 3	110	46	60	90	21 x 6	127
Plenum + GZ 1 + GZ 2 + GZ 3	120	52	70	100	26 x 6	158
GZ 1	16	–	14	12	5 x 6	31
GZ 2 + GZ 3	35	14	22	20	8 x 6	52



See & Park Hotel Feldbach **★★★**

36 rooms

8266 Steckborn

www.hotel-feldbach.ch

The superb setting of this former monastery from the 13th century, the personal atmosphere, expertise and attractive packages provide a foundation for successful seminars and conferences in the See & Park Hotel Feldbach. There are 36 bright, welcoming full-comfort rooms, two plenary halls and five meeting rooms filled with natural light and contemporary infrastructure, a breathtaking lakeside terrace and cosy lounge, while the Turmbar with fireplace is the ideal spot to end a perfect seminar day. The entire hotel can be hired for exclusive events during the winter months.



Room arrangements	Concert	U-Shape	Seminar	Banquet	Length x Width	Area m ²
Feldbachsaal	80	25	36	80	11.3 x 8.5	96
Rosengartensaal	80	25	36	–	10.3 x 9.3	96
Klosterstube	–	–	6	–	4.5 x 4.2	19
Gegaufstube	–	–	10	–	5.8 x 4.5	26
Wügerstube	–	–	14	–	8 x 4.5	36
Wüger-Gegaufstube	–	–	22	30	14.2 x 4.5	64
Rosengarten Gruppenraum 1	–	–	8	–	6.2 x 3.2	20
Rosengarten Gruppenraum 2	–	–	8	–	6.2 x 3.2	20
Turmbar	(Apéros ca. 40)	–	–	18	14.5 x 5.5	80



Seminarhotel Arenenberg

40 rooms

Bildungs- und Beratungszentrum
Arenenberg (BBZ)
8268 Salenstein
www.arenenberg.ch

There are places that are simply magical. The Arenenberg mountain with its unique view of Lake Unter all the way to the volcanic landscape of Hegau is undoubtedly one of them. As far back as Napoleon's time, guests have been fed and treated royally here. Today, they sleep in completely renovated rooms in a historic ambience, and new, bright conference rooms offer space for groups of 10 to 350 people. Event organisers can take advantage of the various local cultural highlights to create an attractive accompanying programme. Modern technology and diverse gastronomy round off the offering. Give your next event a royal touch in this majestic setting above Lake Unter.



Room arrangements	Concert	U-Shape	Seminar	Banquet	Length x Width	Area m ²
Mehrzweckhalle	350	–	150	250	24 x 12	288
Raum Triamant	–	25	60	–	13 x 10	130
Raum Ephoros	–	25	30	–	10.5 x 10	105
Raum Arina	–	20	20	–	8.2 x 6.8	56



Seminarhotel Kloster Fischingen

30 rooms

8376 Fischingen

www.klosterfischingen.ch

Kloster Fischingen – a monument brought to life. Kloster Fischingen is home to Benedictine monks. The seminar and congress hotel is located under the same roof. The abbey's architecture creates space for innovative ideas and target-oriented work. Generously sized rooms, now with integrated meditation centre, exude a sense of calm and sanctuary whilst providing a range of possibilities for a variety of functions. Any event can be enriched with a visit to the restaurant, a guided tour or the simple pleasures of a concert. Where else but at Kloster Fischingen can you concentrate so fully on what is truly important?



Room arrangements	Concert	U-Shape	Seminar	Banquet	Length x Width	Area m ²
Bibliothek	180	–	70	–	16.4 x 13.5	221
Kapitelsaal + Allerheiligen je ca.	50	30	48	–	13.5 x 6.8	92
Matthäus	50	30	40	–	13.2x6.5	86
Selina + Ruth je ca.	40	20	32	–	9.6 x 6.4	60
Wiborada + Florin je ca.	–	12	16	24	6.4 x 6.5	41
6 Gruppenräume je ca.	–	–	10	–	6.1 x 3.4	21
Restaurant + Pilgerstube	–	–	–	120	–	140
Festsaal	–	–	–	80	15 x 7	105
Zendo Meditationsraum	–	–	40	–	15 x 7	105



Schloss Freudenfels

25 rooms

Schlossweg

Postfach

8264 Eschenz

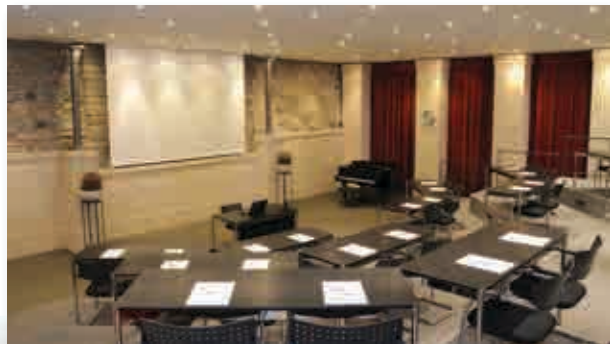
www.schloss-freudenfels.ch

Surrounded by vineyards and with views over Stein am Rhein on Lake Constance, this compact Baroque castle offers an inspirational atmosphere for new thinking and creative ideas. Our guests enjoy not only a top-quality gastronomic experience and facilities boasting the latest equipment, but also 25 single and double rooms, all available for seminars, family and corporate celebrations and weddings, accommodating up to 80 people. The library, the fireside lounge and the beautiful rose garden all offer the perfect opportunity to relax and replenish your strength and energy.

Extras: Fitness centre, mountain bikes, racing shells on Lake Constance, guided tour of the castle, clay pigeon shooting



Room arrangements	Concert	U-Shape	Seminar	Banquet	Length x Width	Area m ²
Aula	80	–	36	–	12 x 10	–
Foyer	–	20	–	64	24 x 8	–
Plenarsaal	30	18	12	–	8 x 7	60
Festsaal	20	10	–	–	7 x 6	40
4 Gruppenräume	–	6	–	–	6 x 5	30
Speiseraum 1	–	–	–	20	7 x 5	35
Speiseraum 2	–	–	–	16	7 x 5	35



Hotels

Toggenburg



Hotel Hirschen ★★★

63 rooms
 Passhöhe
 9658 Wildhaus
www.hirschen-wildhaus.ch

Our traditional 3-star hotel offers you ten seminar rooms up to 210 m² in size, all with natural light. Restaurant with a rustic ambience. Lounge with smokers corner, two skittle alleys, billiards, darts. The 65 comfortable hotel rooms are fully equipped. Spa with large jet whirlpool bath, sauna, steam room, gym, relaxation area. Solarium, massage and cosmetics available for a fee. To the rear of the building you will find parkland with an old-growth forest.

Extras: W-LAN, seminar infrastructure with natural light, Carpe Diem spa



Room arrangements	Concert	U-Shape	Seminar	Banquet	Length x Width	Area m ²
Wildhusersaal	150	70	100	200	18 x 12	210
Wildhusersaal Süd	90	40	60	64	12 x 10	120
Wildhusersaal Nord	60	30	40	45	12 x 8	90
Churfürstenzimmer	35	20	20	16	8 x 6	48
Alpsteinzimmer	-	-	-	10	6 x 4	24
Edelmannstube	40	24	20	56	12 x 6	70



Hotel Stump's Alpenrose

50 rooms

Am Schwendisee

9658 Wildhaus

www.stumps-alpenrose.ch

With its lovely location in Toggenburg's pre-Alpine landscape, the spacious hotel facilities of Stump's Alpenrose on Lake Schwendi offer individuals and groups room for development in an energising setting. Stump's team place a high priority on regional fresh cuisine and an accompanying programme with a local flavour. The excellent conference infrastructure is complemented by a diverse leisure and wellness programme. Stump's Alpenrose is surrounded by the unique natural landscape of the Schwendi lakes, offering the perfect conditions for all kinds of outdoor activities. Simple, enjoyable, personal!

Extras: free W-LAN, wellness area, fitness, mountain bikes, snowshoeing, supervised outdoor activities.



Room arrangements	Concert	U-Shape	Seminar	Banquet	Length x Width	Area m ²
Schwendi I	160	40	80	–	15 x 13	195
Schafberg II	90	25	35	–	11 x 11	121
Silberplatten III	35	15	30	–	8.3 x 8.5	70
Churfürsten IV	100	25	45	–	8.4 x 10.9	91
Churfürsten V	40	15	30	–	8.4 x 7.9	66
Churfürsten IV und V (unterteilbar)	140	30	60	150	18.8 x 8.4	157
Säntis VI	30	15	25	90	8 x 7.3	58



Sunnehus - centre for cure and education

28 rooms

Moosstrasse 41
9658 Wildhaus
www.sunnehus.ch

The Sunnehus is in a unique location with views of the Churfirsten in the upper Toggenburg district. The garden and the landscape exude tranquillity and beauty. The warm and serene atmosphere creates the perfect backdrop for inspirational seminars. Our rooms are furnished in a clear, simple style, with shower/WC and telephone. The classrooms are bright, offering a wide range of infrastructure, as well as mats, meditation cushions and woollen blankets. The healthy and wholesome organic cuisine has been awarded the Swiss «Knospe» [Bio Bud] for organic food and the Goût Mieux certificate. We look forward to pampering you in our establishment.



Room arrangements	Concert	U-Shape	Seminar	Banquet	Length x Width	Area m ²
Saal	100	26	26	30	10 x 8.5	85
Speisesaal	-	-	-	50	14 x 6.5	90
Atemraum	-	-	25	-	13 x 5.5	72
Malatelier	-	20	20	-	12 x 4	48
Bibliothek	-	-	12	-	8 x 4	32
Meditationsraum	-	-	10	-	8.5 x 4	34



Hotel/Landgasthof Rössli

26 rooms

Tufertschwil 20

9604 Lütisburg

www.roessli-tufertschwil.ch

You'll find Hotel Rössli high up in the idyllic village of Tufertschwil above the community of Lütisburg, where the Necker and Thur rivers flow together. The hotel with its lovely view is managed by the owners, Magnus and Esther Thalmann. They and their staff offer you excellent service so that you'll feel at ease in the conference rooms with plenty of daylight and modern technology, as well as in the snug guest rooms, the cosy, rustic restaurant and in the enchanting natural surroundings.

Extras: Free W-LAN. Journey of 10 minutes from Wil. Hotel shuttle to and from Lütisburg train station.



Room arrangements	Concert	U-Shape	Seminar	Banquet	Length x Width	Area m ²
Thur-Neckersaal	100	30	40	72	11.5 x 8	90
Thursaal	36	20	24	32	8 x 6	50
Neckersaal	32	16	18	16	8 x 5	40
Alpsteinblick	20	12	12	–	8 x 4	32
Rösslistube	30	14	14	16	7 x 4.5	30



Event locations

Eastern Switzerland



CongressEvents St.Gallen

Genossenschaft
 Olma Messen St.Gallen
 Splügenstrasse 12
 9008 St.Gallen
www.congressevents.ch

Whether you are organising a banquet, congress, seminar or party, the Olma Messen St.Gallen congress and event department offers you full-service venues. A variable room and furniture concept, many years of experience and extreme flexibility are our hallmarks. The latest technology, attractive design and culinary highlights guarantee the success of your event and will inspire your participants.



Room arrangements	Concert	U-Shape	Seminar	Banquet	Length x Width	Area m ²
Hall 2.1	1100	–	600	1000	72 x 35	3000
Hall 3.1	2000	–	1200	1000	68 x 35	2665
Hall 9.0	–	–	–	2000	107 x 77	7430
4 workshop rooms in Hall 9.0 (plus foyer)	200	50	100	–	22 x 11	240
Hall 9.1	3800	–	2500	1800	73 x 54	3935
Hall 9.1.2	800	–	600	530	42 x 25	1050
Hall 9.2	800	–	600	600	39 x 36	1185
3 Workshop-rooms in Hall 9.2 (B/C/D)	80 to 300	15 to 50	30 to 200	–	–	–
Foyer Hall 9.2	–	–	–	300	–	342



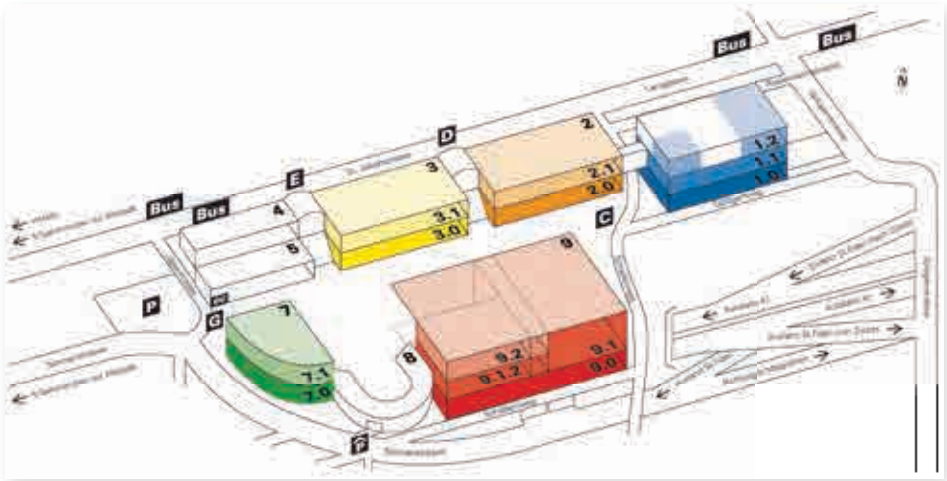
CongressEvents St.Gallen

Genossenschaft
Olma Messen St.Gallen
Splügenstrasse 12
9008 St.Gallen
www.congressevents.ch

Most of the rooms enjoy natural daylight and have generously proportioned foyers, which are perfect for breaks or drinks receptions. We can also provide additional rooms for side events or workshops should you require them.

We have many years' experience in the holding of events, coupled with extremely creative ideas. We have extraordinarily flexible premises in a very central location, easily accessible in no time at all from the town's hotels by public transport, by car or on foot.





Range of services:

- General business service from planning to realisation
- Individual consultation and event planning such as conferences with exhibitions, meetings, banquets, festive occasions, cultural events, parties, trade fairs and sales events
- Concept and budgeting
- Design and arrangement of the halls
- Organisation and planning of necessary measures before, during and after the event
- Catering for large events and smaller occasions
- Arrangement for auxiliary services, such as decor, technical equipment, building, catering, etc.
- Conference room arrangements
- Public relations and advertising of events



Seeparksaal Arbon Bodensee

Wassergasse 14
9320 Arbon
www.arbon.ch
(Facilities in Arbon)

The modern Seeparksaal, located directly on Lake Constance, is attractive thanks to its functional infrastructure and suitability for occasions such as conferences, congresses, general meetings, banquets, large weddings, cultural and sporting events, exhibitions and fairs. The Seeparksaal offers space for 1200 visitors with concert seating and 1000 people with banquet seating. **Extras:** Choice of room arrangements, stage, modern technology, winter garden, large foyer, conference bureau, equipped kitchen, office, choice of catering, approx. 200 free parking spots, handicapped accessible



Room arrangements	Concert	U-Shape	Seminar	Banquet	Length x Width	Area m ²
3/3 hall	1200	600	425	850	45 x 27	1200
2/3 hall	700	400	300	600	32 x 27	800
1/3 hall	300	150	100	200	13 x 27	400
Panorama foyer	100	50	40	100	7 x 18	150
Entrance foyer	-	-	-	-	-	150
Shower	-	-	-	-	-	-
Cloakrooms	-	-	-	-	-	-
Office	-	-	-	-	-	-
Kitchen	-	-	-	-	-	-
Conference office	-	-	-	-	-	-





Fürstenlandsaal Gossau

Bahnhofstrasse 29
9200 Gossau
www.fuerstenlandsaal.ch

Friendly, bright, expansive and well-appointed – the perfect ingredients to present your event in the right light. The Fürstenlandsaal in the centre of Gossau provides the ideal location for your event. The different available hall sizes give you the chance to meet your requirements and fulfil your wishes.



Room arrangements	Concert	U-Shape	Seminar	Banquet	Length x Width	Area m ²
Hall 1	250	–	80	160	–	220
Hall 1 + 2	700	–	220	450	–	540
Hall 1 + 2 + 3 (gymnasium)	1150	–	400	800	–	950
Foyer	–	–	–	–	–	100
Foyer common area Hall 1-3	–	–	–	–	–	250
Powder room 1+2 on upper floor with	–	–	–	–	–	12
Recreational room 1 on upper floor	–	–	14	–	–	35
Recreational room 2 on upper floor	–	–	10	–	–	25
Stage	–	–	–	–	11,3x20,6	230



Pentorama

Arbonerstrasse 4
8580 Amriswil
www.pentorama.ch

The Pentorama is no ordinary event centre. With its pentagonal, irregular design and striking yellow interior façade, it resembles a party tent and is suitable for all kinds of events. This building with its brilliant copper shell provides a special setting for everything from concerts, theatre productions and parties to conferences and congresses. The available spaces include an 853 m² hall, two galleries and a foyer; the hall can also be divided into any size using the space dividers provided.



Room arrangements	Concert	U-Shape	Seminar	Banquet	Length x Width	Area m ²
Hall	1057	–	561	846	34.5 x 35.5	853
Large gallery	95	–	84	84	22.8 x 8.8	168
Small gallery	65	–	–	43	21.4 x 7.3	65
Foyer	–	–	84 Plätze an Stehtischen	84 Plätze an Stehtischen	–	170
Kitchen	–	–	–	–	–	103
Stage	–	–	–	–	–	140
Courtyard	–	–	–	–	–	1600





Tonhalle St.Gallen

Museumstrasse 25
9004 St.Gallen
www.theatersg.ch

The «Tonhalle St.Gallen» is a beautiful concert hall located on the eastern outskirts of the historic city centre in the heart of the city gardens. This architectural gem was built at the beginning of the 20th century and newly renovated in 1993. The Tonhalle St.Gallen can be rented for concerts, conferences and banquets. Catering is available from our own in-house Concerto restaurant.



Room arrangements	Concert	U-Shape	Seminar	Banquet	Length x Width	Area m ²
Great Hall (incl. gallery)	891	–	–	280*	–	750
Great Hall (front area)	558	–	180*	250*	–	550
Small Hall (incl. balcony)	253	–	–	–	–	180
Schoeck Foyer	50	–	–	60	–	90
Intermezzo (ground floor)	100	–	100	120	–	160
Foyer EG	180	–	180	200	–	370
Foyer (UG)	140	–	120	90	–	210

*Hall floor



SAL Saal am Lindaplatz

Landstrasse 19
 FL-9494 Schaan
www.sal.li

The municipality's modern cultural and events centre distinguishes the town centre of Schaan. The SAL with its two halls joined by a spacious foyer, the covered Lindahof in front, and the Lindaplatz opposite, offer 2200 m² inside and 1500 m² outside for your special event. Whether you are planning a seminar, congress, fair, exhibition, cultural event, ball or club meeting, both private and professional organisers will find the right setting here.



Room arrangements	Concert	U-Shape	Seminar	Banquet	Length x Width	Area m ²
Great Hall	880	95	372	552	26 x 20	533
Small Hall	400	72	150	256	21 x 12	260
Foyer	-	-	-	-	28 x 41	580
Lindahof - covered entrance hall	1100	-	-	480	15 x 32	555
Seminar room 1	30	16	-	-	5 x 6	31
Seminar room 2	30	20	-	-	5 x 7	34
Seminar room 3	60	30	30	-	8 x 10	80





Universität St.Gallen

Universität St.Gallen (HSG)
 Dufourstrasse 50
 9000 St.Gallen
 www.unisg.ch

The HSG is not merely a university; it is also a setting for workshops, conferences and congresses of all types. Events such as the St.Gallen Symposium (ISC), World Demographic & Ageing Forum and the International Seminar for Oncological Care are proof of this. The HSG is a popular and desirable event location and offers the right infrastructure for almost any event. Its peaceful situation on the Rosenberg hill, the spacious architectural dimensions in the middle of a park setting and works by Miró, Giacometti and Richter make the HSG a highly renowned place of art and culture. Combined with modern infrastructure, the University of St.Gallen is the ideal venue for your congress or conference.



Room arrangements	Concert	U-Shape	Seminar	Banquet	Length x Width	Area m ²
Auditorium	bis 700	–	384	–	–	736
Audimax	640	–	–	–	–	534
Seminar rooms	–	15 to 60	60 to 100	–	–	35-255
Classrooms	–	–	150 to 200	–	–	200
Computer labs	–	–	30	–	–	100
Gastronomy	–	–	–	upon request	–	→1000
Foyer	–	–	–	–	–	195-610

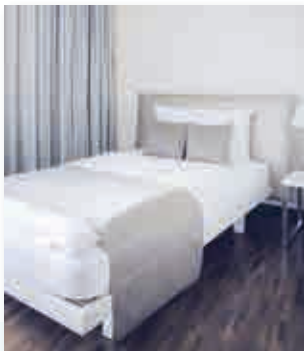


Weiterbildungszentrum Holzweid mit HSG Alumni Haus

54 rooms

Weiterbildungszentrum Holzweid
 Holzstrasse 15
 9010 St.Gallen
www.wbz.unisg.ch

This is where ideas are born. The Executive Campus HSG is used by the institutes of the University of St.Gallen for their continuing education events. External clients are also welcome and can profit from many years of experience of a trained crew. The center is located in the beautiful, tranquil Rotmonten neighbourhood surrounded by nature yet is only 10 minutes by bus from the city's downtown. The HSG Alumni House is also part of the Executive Campus HSG and offers 54 stylish rooms. The accommodation is directed at visitors to events at the University of St.Gallen.



Room arrangements	Concert	U-Shape	Seminar	Banquet	Length x Width	Area m ²
Peter Kaiser Saal	257	36 - 56	106	-	13 x 20	257
Handelskammer Saal	155	32 - 48	68	-	11 x 15	174
Walter Adolf Jöhr Saal	155	32 - 44	60	-	11 x 15	165
Hans Ulrich Auditorium 1 - 2	128	30 - 48	60	-	15 x 13	204
Hans Ulrich Auditorium 3 - 4	176	36 - 48	72	-	18 x 13	237
Hans Ulrich Auditorium 1 - 4	320	-	182	-	33 x 13	447
21 Gruppen-/ Workshopräume	-	8 - 32	12 - 56	-	diverse	20 - 120
Foyers (EG & UG)*	-	-	-	320 stehend	-	520
Restaurant Intermezzo & Bistro	-	-	-	190/40 sitzend	-	400





Stadtsaal Wil

Bahnhofplatz 6
9500 Wil
www.stadtsaal-wil.ch

The Stadtsaal Wil is available for top-level events. Centrally located in the Winterthur – St.Gallen – Frauenfeld triangle, its five flexibly combinable halls with modern infrastructure and top-class catering offer the optimum conditions for concerts, conferences, seminars, banquets and events of every kind. Accessibility is also first class. The Stadtsaal is located right by the railway station and has a large underground car park for guests who arrive by car. The Stadtsaal Wil – the convention and cultural centre in the heart of Eastern Switzerland.



Room arrangements	Concert	U-Shape	Seminar	Banquet	Length x Width	Area m ²
Grosser Saal	684	–	300	468	23 x 20	460
Alleesaal	60	30	36	60	10 x 8	80
Gallussaal (G)	28	12	12	24	6 x 5,5	33
Pestalozzisaal (P)	28	12	12	24	6 x 5,5	33
Notkersaal (N)	28	12	12	24	6 x 5,5	33
3 meeting rooms	92	–	42	72	–	–
2 meeting rooms	56	30	24	48	–	–



Stadthof Rorschach

Kirchstrasse 9
 9400 Rorschach
www.stadthof-rorschach.ch

The Stadthof Rorschach and our Gault Millau-recognised restaurant are ideal for congresses, seminars, company, club and family parties, cocktails and concerts. Our facilities are equipped with the most modern technical systems. We are happy to assist you starting with your reservation and continuing all the way through to the successful realisation of your event. Let yourself be inspired by our ideas and the different options available (from delectable cocktails to open-air concerts in the lakeside pavilion).



Room arrangements	Concert	U-Shape	Seminar	Banquet	Length x Width	Area m ²
Saal A&B	600	120	250	580	27 x 16.3	430
Saal A	320	80	150	240	14.5 x 16.3	240
Saal B	230	60	80	180	12 x 15.5	186
Pavillon am See	400	–	–	250	–	–
Blumenau (Zentrum)	100	35	40	80	unterteilbar	102
Notker (Zentrum)	80	25	40	60	unterteilbar	95
Casino (Zentrum)	60	20	30	40	unterteilbar	60
El Cid (Zentrum)	25	15	15	20	–	25
Kegelbahn	–	–	–	30	–	–



Würth Haus Rorschach

Würth Haus Rorschach
Churerstrasse 10
9400 Rorschach
www.wuerth-haus-rorschach.ch

The Würth Haus Rorschach invites you to spend «moments that will inspire you». The building, designed by Zurich architects Gigon/Guyer, has been a visionary meeting place since opening in April 2013. Consisting of the Carmen Würth Hall and 16 seminar rooms, the venue offers space for events of all types. Its Restaurant Weitblick and KunstCafé ensure that the highest culinary expectations of event organizers will be fulfilled. The rotating art exhibitions at the Forum Würth Rorschach provide cultural highlights. Additional services and support for event planning and implementation can be booked via the market agency.



Room arrangements	Concert	U-Shape	Seminar	Banquet	Length x Width	Area m ²
Carmen Würth Hall	600	–	210	320	26.0 x 19.0	500
4 seminar rooms	40	16	16	–	6.60 x 9.00	60
2 seminar rooms	30	14	16	–	5.50 x 9.00	50
Double room combo	70	24	50	–	11.50 x 9.00	105
Triple room combo	150	40	100	–	18.00 x 9.00	160
6 seminar rooms	30	12	18	–	7.00 x 7.00	50
4 seminar rooms	–	8	–	–	5.00 x 4.00	20
Restaurant Weitblick	–	–	–	200	–	–



Säntis – der Berg

Säntis-Schwebebahn
 Hotel, Gastronomie, Events
 9107 Schwägalp
www.saentisbahn.ch

Mount Säntis: meetings at the highest level. There are many venues, but only a few can boast such excellent infrastructure and such an impressive backdrop. Mount Säntis is suitable for all types of seminars or conventions, no matter what the size or nature, since it offers efficient catering capabilities, exclusive activity programmes and outstanding accommodation options at Schwägalp. The Säntis Event Team would be happy to advise you and help organise and coordinate your event at Schwägalp and Mount Säntis.

PS: You should also visit our new «Säntis - das Hotel» on the Schwägalp, with its large seminar and banqueting rooms.



Room arrangements	Concert	U-Shape	Seminar	Banquet	Length x Width	Area m ²
Appenzeller Event-Halle	250	–	100	150	–	300
Panorama-Halle	500	–	–	–	–	400
Panorama-Säli	60	20	35	50	–	58
Terrassen-Säli	60	20	35	50	–	58
Selun	–	8 (Block)	–	–	–	12
Panorama-Restaurant	–	–	–	180	–	260
Schwarzwaldblick	40	20	30	–	–	91



Chäserrugg

Toggenburg Bergbahnen AG
9657 Unterwasser
chäserrugg.ch

The mountain Chäserrugg, the most easterly of the seven Churfirsten, is a bracing place, influenced by a unique nature and a marvellous architecture. Built in 2015 by the architects Herzog & de Meuron, the building on top of the Chäserrugg can be used for seminars, meetings, presentations, concerts or corporate events or festivities. The mountain experience can also contain guided tours, hiking in summer or winter, skiing or sledding. The kitchen is influenced by local specialities and fulfils the culinary requirement with high quality.



Room arrangements	Concert	U-Shape	Seminar	Banquet	Length x Width	Area m²
Chäserrugg Saal + Stube	500	150	300	450	–	440
Chäserrugg Saal	350	100	180	290	–	300
Chäserrugg Stube	150	50	100	150	–	140
Alpzimmer	70	25	40	60	–	80
Tenn & Balkon	200	–	–	–	–	200
Terrasse	100	–	–	100	–	160



Kursaal Heiden

Seeallee 3
9410 Heiden
www.kursaalheiden.ch

The Kursaal Heiden is ideally suited for conferences, seminars, celebrations and cultural events. Hold your event in stylish and inspiring surroundings. Five exceptional, sunlit rooms covering 500 m² and with the latest technical infrastructure offer more than enough space for up to 360 guests. Let yourself be inspired by the beautiful terrace, century-old trees, adjacent park, and the building's unique Bauhaus design. The Kursaal Heiden can be combined ideally with Hotel Heiden for events. The facilities are located across from one another and their services complement each other perfectly.



Room arrangements	Concert	U-Shape	Seminar	Banquet	Length x Width	Area m ²
Festsaal	360	72	165	240	21,8 x 12	265
Ecksaal	35	22 (Block)	18	24	8,7 x 4,5	40
Kaffee	30	16 (Block)	10	24	5,8 x 5,5	32
Tanzsaal	45	20 (Block)	–	24	9 x 7	63
Lesesaal	63	24	30	40	9,8 x 6,2	60
Foyer	–	–	–	–	10,5 x 5,3	55





Eventschiff MS Sonnenkönigin

komitee eventservice
marberger GmbH
A-6850 Dornbirn
www.sonnenkoenigin.cc

The charter ship MS Sonnenkönigin, the breathtaking floating location on Lake Constance, offers a unique setting for your event. Your guests will spend an unforgettable evening on board. Perfect event planning, capacity for 1000 people, the most modern technical event equipment and four decks enable you to host a variety of events. On top of that, you may choose the harbour and the course to be followed within the lake area between Switzerland, Germany and Austria.



Room arrangements	Concert	U-Shape	Seminar	Banquet	Length x Width	Area m ²
Main deck	ca. 350	ca. 130	ca. 120	ca. 200	–	ca. 350
1st upper deck	–	–	–	ca. 160	–	ca. 305
2nd upper deck	–	–	–	ca. 160	–	ca. 256
Sun deck	–	–	–	–	–	ca. 300



St.Galler Pfalz, Regierungsgebäude

Klosterhof 3
9000 St.Gallen
www.pfalzkeller.sg.ch

The abbey district of St.Gallen is a UNESCO World Heritage Site and provides a beautiful backdrop for conventions, celebrations and exhibitions. The «Pfalzkeller» premises comprise two impressive vaults – the «Pfalzkeller» itself and the «Hofkeller» – with the new square designed by architect Santiago Calatrava. These special rooms are particularly suited for receptions with refreshments, exhibitions, banquets and occasions of all kinds.



Room arrangements	Concert	U-Shape	Seminar	Banquet	Length x Width	Area m ²
Pfalzkeller	–	–	–	180	–	750
Forum vor Pfalzkeller	280	–	60	120	–	540
Hofkeller	140	–	40	100	–	190
Kantonsratssaal	–	–	180	–	–	320
Ratsstübli	–	–	–	48	–	54





Schloss Laufen

Areal Schloss Laufen
8447 Dachsen
www.schlosslaufen.ch

With five rooms and space for two to 200 people, Schloss Laufen offers outstanding presentation possibilities for unforgettable events, whether private or corporate. With expert advice, polished service and vast experience, we surround your special moment with the right decorations, accompanying entertainment and tasteful creations. Come right in, Schloss Laufen loves to spoil you and your guests. During your event or celebration, Schloss Laufen will tell its impressive stories high above the rushing Rhine Falls. This is definitely an event location like no other.



Room arrangements	Concert	U-Shape	Seminar	Banquet	Length x Width	Area m ²
Rittersaal 1	100	20	40	56	n/a	120
Rittersaal 2	100	20	40	56	n/a	120
Rittersaal 1+2	200	35	80	120	n/a	240
Rheinfallsaal	60	15	30	n/a	n/a	110
Castello	n/a	n/a	n/a	60	n/a	120
Rundturm	n/a	n/a	n/a	15	n/a	25



Stadthaus der Ortsbürgergemeinde St.Gallen

Gallusstrasse 14
9001 St.Gallen
www.ortsbuerger.ch

The Stadthaus is situated in the heart of the monastery quarter near the abbey church and library. This representative building built in 1589 with its beautiful rooms is excellently suited for small to medium-sized events, seminars, conferences and concerts (grand piano available). The newly renovated Stadthauskeller reopened in 2012 and welcomes you to all manners of stylish events. All rooms offer modern infrastructure. Parking and accommodations are available very close by.



Room arrangements	Concert	U-Shape	Seminar	Banquet	Length x Width	Area m ²
Party hall (Yamaha C3 grand piano upon request)	100	20	24	60	12 x 8	95
Bürgerratssaal	–	–	12	–	7.5 x 5.5	40
Vaulted room	–	–	18	–	8 x 5	40
Stadthauskeller	80	10	12	60	15 x 7.5	110



Athletik Zentrum

Capacity:
up to 3000 people

St.Gallen

www.athletikzentrum.ch



Business meets sports. The St.Gallen Athletics Centre is setting new standards. The multifunctional hall features attractive modern architecture with the only covered 200-m track with adjustable curve heights in Switzerland. The St.Gallen Athletics Centre also impresses with its individuality and almost unlimited options. Flexible sport halls, seminar rooms, accommodations, free choice of gastronomy selections, attached parking garage and extremely modern equipment and facilities. The seminar area can accommodate around 100 people and is equipped with the latest technology. The Athletics Centre is easily accessible with public transportation. The attached (public) parking garage has space for 100 vehicles.

Swiss Lake Constance Navigation Company

Capacity:
up to 700 people

Bodensee

www.bodenseeschiffe.ch



The ships of the Swiss Lake of Constance Navigation Company provide a unique location for your special occasion. Seven ships and two ferries accommodate groups from 20 to 700 people. You choose not only the ship, but also the duration and destination. We organise our customers also a complete program – whether thrills on the murder mystery boat, Mexican boat, fajita-, fondue- or pirate boat – the ideas and possibilities are unlimited. Carry weight and be impressed... more lake – more event – on the sea of Switzerland!

Lokremise St.Gallen

Capacity:
up to 500 people

St.Gallen

www.lokremise.ch



The Lokremise, located in the heart of St.Gallen, is a unique multifunctional cultural centre for theatre, film, art exhibitions and gastronomy. The Lokremise can also be rented by third-party event organisers for conferences, presentations, company parties and celebrations. Built during the textile industry boom, this urban building is the largest preserved locomotive roundhouse in Switzerland.

Winery Tobias Schmid & Son

Capacity:
up to 300 people

Berneck

www.tobiasschmid.ch



Set amongst nature and the vines, Tobias Schmid & Sohn is a 5th generation family winery and distillery providing many options for your perfect event. Ideally located, just 10 minutes drive from the Berneck/Au motorway exit, we invite you to take a break and step inside our world of winemaking and celebrations.

Join us for a wine tasting and sample our handcrafted wines and wide range of spirits, or hold your event in one of our spacious rooms. The 2 storey Winzerhaus, a newly renovated stable and barn with a rustic, yet modern feel, is the perfect setting for events of up to 200 people.



autobau™ Romanshorn

Capacity:

up to 300 people

Romanshorn

www.autobau.ch



Experience Eastern Switzerland's unique automobile collection. Vehicles from national and international car racing as well as elegant sports cars will impress you in the unique ambience of the former Romanshorn fuel depot. The autobau Erlebniswelt is a fascinating world of experiences that also offers fantastic opportunities for events. The modern, high-quality infrastructure is ideal for cocktail receptions, seminars or gala dinners. Thanks to a spacious outdoor area and its own racetrack, your private or corporate event will be enhanced by an exciting accompanying programme.

Markthalle Altenrhein

(based on an idea and design by Friedensreich Hundertwasser)

Capacity:

up to 300 people

Altenrhein

markthalle-altenrhein.ch



Gold-plated onion domes, bright colours, sweeping lines, asymmetrical windows, uneven floors, colourful ceramic pillars, shady ambulatories, and roof gardens are the distinctive features of Friedensreich Hundertwasser's architecture. His dream and aim were to create an appealing environment for people, while simultaneously helping nature to flourish. The unique architecture of the building with its extraordinary atmosphere is an ideal setting for banquet meals, receptions, exhibitions, product presentations, etc.

Kunsthalle Ziegelhütte Appenzell

Capacity:
up to 250 people

Appenzell

www.kunsthalleziegelhuette.ch



The 2nd house of the Heinrich Gebert culture foundation was opened in 2003. The brickwork is back to the 16th century with a walk-in brick baking oven at its heart (1566). It was converted by the architect Robert Bamert into a multi-functional cultural centre with a café, music and theatre stage together with a three-floor display wing. This building has become a monument to earlier Appenzell industry and an exhibition space for modern and contemporary art. The stage over the baking oven is used as a location for meetings, wedding drinks etc.

Burg Hohenklingen

Capacity:
up to 200 people

Stein am Rhein

www.burghohenklingen.com



In a magnificent location high above the little town of Stein am Rhein, is the medieval castle of Burg Hohenklingen, which was fully renovated from 2005 to 2007. In this unique castle ambiance with a touch of the modern, we offer culinary and eventful highlights. You will experience personal hospitality and unforgettable moments with us when you are enchanted by the charm of castle. Are you looking for somewhere really special for your special celebration? Then feel free to contact us for further information about our range of options. Incidentally, Burg Hohenklingen can also be booked exclusively.



Gonzenbergwerk

Capacity:

up to 200 people

Sargans

www.restaurant-gonzenbergwerk.ch



Restaurant Gonzenbergwerk is located right inside a mountain! Surrounded by massive rock, the gallery portal also leads to a cavern, where an original and elegant restaurant offering classic Swiss specialities has been established. The furnishings of this one-of-a-kind restaurant with a small integrated museum have a close connection to the former iron ore mine located in Gonzen, Sargans' local mountain. The restaurant can be visited without being part of a tour, either by individual guests or for banquets, weddings and corporate events with up to 200 people.

Aviation Museum

Capacity:

up to 200 people

Altenrhein

www.fliegermuseum.ch



The Altenrhein Aviation Museum is dedicated to the people and machines <writing> history in the skies. The museum includes an auditorium with 70 airplane seats and an event hangar that can be adapted to meet your needs and make your event an unforgettable experience.

Brewery St.Johann

Capacity:
up to 190 people

Neu St. Johann

www.brauereistjohann.ch



Welcome to the Brewery St. Johann. Regional, authentic, unique, modern-rustic, warm, relaxed, straightforward, down-to-earth, flexible, young and dynamic – that is what we are and what characterise us. Are you looking for a hall up to 150 people, a meeting room up to 35 people or for a board room? With us, you enjoy seminars, receptions, meetings, banquets or individual events. We are looking forward to your visit.

Restaurant Schnuggebock Waldegg

Capacity:
up to 150 people

Teufen

www.waldegg.ch



The best from yesterday.

We carefully turn the clock back. Hearty food. No snooty, unpronounceable names from the other end of the world. Local apples instead of exotic oranges. Here, with Granny in the farmhouse, everything moves slightly more slowly – and more enjoyably. Suddenly, at the next table, you hear a lively discussion in a foreign language. Japanese, Russian, English. Guests come from all over, seeking the same thing. The real deal, genuine and unadorned. That's what the Schnuggebock epitomizes. Unique in the world. The best from yesterday.



Wasserschloss Hagenwil

Capacity:

up to 150 people

Hagenwil / Amriswil

www.schloss-hagenwil.ch



The only moated castle in Eastern Switzerland is the ideal location for weddings, company gatherings, team-building events, atmospheric dinners and events of all kinds, both private and corporate. The restaurant team places great value on regional products and freshly prepared dishes. The 800-year-old castle walls, various rooms and natural setting between horse pastures and vineyards offer an authentic ambience for groups of up to 150 people or for cocktail receptions with up to 250 guests.

Hohentwiel Steamboat

Capacity:

up to 125 people

Lake Constance

www.hohentwiel.com



A ride on the most beautiful paddle steamer on Lake Constance is a true pleasure. Experience the incomparable magic of travelling in turn-of-the-century style. Charter the «Hohentwiel» for a company anniversary, an extra-special office outing or an important conference. Lean back, listen to the gentle pounding of the steam engine and enjoy the maritime flair on deck and the refined elegance in the salons. The exquisite ambience and personal, first-class service turn every event into a special experience.

Gaststuben zum Schlössli

Capacity:

up to 120 people

St.Gallen

www.schloessli-sg.ch



At the «Schlössli» on the edge of St.Gallen's Old Town, «haute cuisine regional» is right at home. The former feudal estate of an old St.Gallen family offers the perfect setting. In the building from the 16th century, halls, salons, and alcoves give the «Schlössli» a special air. Kings, presidents, and other high-ranking guests appreciate the culinary creations just as much as do lovers of modern, open-concept, classic cuisine with St.Gallen specialities and select wines from Eastern Switzerland.

Kultur im Bären

Capacity:

up to 120 people

Häggenchwil

www.kulturimbaeren.ch



Kultur im Bären, Häggenchwil – Enjoy the triple combination of event, dining and culture here. Whether it is an anniversary celebration, customer appreciation activity, seminar, wedding, birthday party or cooking class, the charm of this restaurant always lends your event a very special flair. If you are looking for that certain something and would like to give your event a unique setting, then you've come to the right place. The entire facilities are available for you and your guests and thus the possibilities for using the rooms and the schedule of activities are extremely diverse and flexible. Experience for yourself how unique your event can be. You'll have sufficient opportunities to do so.



Kronberg

Capacity:

up to 120 people

Jakobsbad

www.kronberg.ch



An Appenzell insider's tip at 1668 metres above sea level. The cosy mountain guesthouse on the Kronberg peak invites you to enjoy a programme of pleasure in true Appenzell style. As an appetiser, we serve up a heavenly view from the Alpstein over Lake Constance all the way to the Bernese Oberland region. We then recommend an authentic Swiss speciality from our well-known Appenzell cuisine as your main course. As dessert, we garnish your experience with a few more relaxing hours spent high up on the Kronberg. The aerial cable car is also available outside of regular operating hours to take you safely and comfortably back down to the valley. Both the mountain guesthouse and the newly opened valley restaurant are ideal for meetings and seminars.

Schloss Oberberg

Capacity:

up to 120 people

Gossau

www.schloss-oberberg.ch



Welcome to your castle.

Schloss Oberberg is not just the landmark of Gossau; it is also a place where you can enjoy a royal repast, hold intensive seminars or relax in a comfortable setting. The classy castle restaurant invites you to enjoy and the cosy garden pub is the perfect place to linger for a while. The chapel and banqueting halls offer an enchanting backdrop for weddings. The modern seminar infrastructure is ideal for conferences and workshops in an inspiring location. The Schloss Oberberg gift shop is available for fans of stylish gifts and decorations to create those truly magical moments.

Historischer Saal

Capacity:
up to 100 people

St.Gallen



The hall with its foyer and gallery, the historic ambience, great attention to detail and various options for refreshments constitute the ideal environment for successful events. The hall is equipped with modern technology and is ideally suited to training or workshop events. The historic hall is situated in the railway station building and is thus easily accessible by public transport. Multi-storey car parks are also located in close proximity.

Lapidarium

Capacity:
up to 100 people

St.Gallen



The former vegetable storehouse and wine cellar of the monastery stands out thanks to its austere stone arches. Today, surrounded by a one-of-a-kind collection of medieval architectural sculpture, it is known as the Lapidarium (stone museum). Carolingian and Ottonian pieces from the 9th and 10th centuries are exhibited and are among the most brilliant and monumental examples of Carolingian architectural sculpture. A space in the heart of the city with a direct connection to the St.Gallen Abbey Library UNESCO world heritage site.



Textilmuseum

Capacity:

up to 100 people

St.Gallen

www.textilmuseum.ch



Whether it is a company party, conference, meeting or private celebration, the Textile Museum, located in the Palazzo Rosso built in 1886, offers the right setting. Hold your events in the unique ambience of this palace, where the grandiose past and innovative future of the Swiss textile industry meet. Is your programme still lacking a special highlight? A visit to the library with thousands of pattern books and fashion photos, a tour of the exhibit rooms full of splendid textiles or a demonstration of the hand embroidery machine will introduce you to a world of imagination, creativity and advanced technical performances.

Kaufmännischer Verband

Capacity:

up to 80 people

St. Gallen

www.kfmv-ostschweiz.ch



Are you planning a seminar, conference, negotiations, congress, workshop, meeting or other function? We offer rooms of various sizes with state-of-the-art infrastructure at a fair price. Your ideal venue is located centrally in St.Gallen, immediately behind the main rail station between the college and the Lokremise cultural centre.

Sitterwerk

Capacity:
up to 80 people

St.Gallen

www.sitterwerk.ch



The Sitterwerk on the premises of a former textile dye works is a lively spot characterized by art and artistic production. The Art Library and Material Archive, a diverse collection of materials used to produce art, are both open to the public. As is the Kesselhaus Josephsohn, which serves as an exhibition space, gallery and storage area for plaster models and bronzes by Zurich sculptor Hans Josephsohn (1920–2012). The rooms of the Art Library and Material Archive are available to rent, including catering, as a special venue for smaller conferences, seminars and festive occasions. Tours of the Sitterwerk and Kunstgiesserei are also given.

Tröckneturm St.Gallen

Capacity:
up to 60 people

St.Gallen

www.troeckneturm.ch



The Tröckneturm is a distinctive tower from the glory days of St.Gallen's textile industry. The «Tröckneturm Foundation» has carefully renovated this industrial building and set up a documentation point about the economic history of the city of St.Gallen and the history of the most important branches of the St.Gallen textile industry. There is a lovely room for more intimate encounters that is especially suited to aperitifs and banquets and has a cosy fireplace.



Motor yacht «Emily»

Capacity:

up to 56 people

Horn

www.badhorn.ch



The hotel's motor yacht, «Emily», is anchored in its own harbour right next to Bad Horn. Emily is resplendent in the style of the legendary wooden yachts of the 1930s and invites you to come aboard and sail nostalgically around Lake Constance – in summer or in winter! The yacht offers an extraordinary, very elegant setting for your family or corporate event with groups of up to 56 people. Everything you need to make your experience perfect is included, of course: pristine nature, lake breezes, lakeside views, culinary delights, culture, adventure...

Event kitchen Urnäsch

Capacity:

up to 54 people

Urnäsch AR

www.eventkueche.ch



Enjoy a family celebration, corporate party, customer event or simple «Zemehöckle» in a cosy atmosphere with good friends surrounded by food and drink. The technical infrastructure also allows for seminars and workshops. The event kitchen is more than just a kitchen. Along with the dining room and outdoor area, this is an ideal space for your event – whatever it might be. We also offer professional barbecue courses as an official Weber Grill Academy.

Abenteuerland Walter Zoo

Capacity:

up to 48 people

9200 Gossau

www.walterzoo.ch



Welcome to a very special kind of seminar facility. In the Abenteuerland Walter Zoo, every occasion becomes an unforgettable experience, between the tiger enclosure and the tropical greenhouse. Depending on seating arrangements, the well-lit Octagon has room for up to 48 people. With car parks right next to the zoo site, two restaurants and the experience gained from a large number of functions, everything is completely taken care of. And where else can you gain inspiration during the breaks from playful chimpanzees, colourful parrots or graceful leopards? We look forward to meeting you.

Altes Rathaus Schwänberg

Capacity:

up to 40 people

Herisau

www.schwaenberg.ch



This magnificent half-timbered building with rooms in the late Renaissance style was constructed between 1627 and 1630. The historic museum is to be found in a very fine location in the idyllic village of Schwänberg in Herisau. Make use of the «Altes Rathaus» for your family celebrations, team retreats, club or corporate functions. You and your guests will be enchanted by the charm and the special charisma of the old town hall. Conferences, weddings, exhibitions, courses, private viewings, meditations and much more become unparalleled experiences here.



More event locations Eastern Switzerland

Restaurant Netts Schützengarten

up to 200 people
9000 St.Gallen
www.netts.ch



Restaurant Candela

up to 180 people
9000 St.Gallen
www.restaurantcandela.ch



Restaurant Lagerhaus

up to 160 people
9000 St.Gallen
www.restaurantlagerhaus.ch



Kulturzentrum Casino Herisau

up to 610 people
9102 Herisau
www.herisau.ch



Drehrestaurant Hoher Kasten

up to 250 people
9058 Brülisau
www.hoherkasten.ch



Flumserei

up to 480 people
8890 Flums
www.flumserei.ch



More event locations Eastern Switzerland

Panoramarestaurant Aurea

up to 100 people
7310 Bad Ragaz
www.aureapizol.ch



Alte Post

up to 50 people
7326 Weisstannen
www.post-ab.ch



Güterhof

up to 700 people
8200 Schaffhausen
www.gueterhof.ch



Bergrotte Osterfingen

up to 300 people
8218 Osterfingen
www.bergrotte.ch



Eisenwerk

up to 450 people
8500 Frauenfeld
www.eisenwerk.ch



Propstei Alt Sankt Johann

up to 190 people
9656 Alt St.Johann
www.sanktjohann.ch



Social activities

Eastern Switzerland



St.Gallen city tour

Capacity:
up to 250 people

St.Gallen



It is as if the houses suddenly start to speak – a guided tour is always an exciting voyage of discovery. The well-qualified and charming tour guides know all about the history of the city of St. Gallen. During the tour, you will not only hear stories about strong women, rich textile mill owners, refugee rescuers or the art of modern construction. You will also learn interesting facts about the status of the city as a UNESCO World Heritage Site, city of education and attractive business location.

St.Gallen themed tours

Capacity:
up to 250 people

St.Gallen



In addition to the traditional guided tours, St.Gallen is also perfect for themed explorations. Go on a voyage of discovery through the textile history of St.Gallen, or listen to the stories about the houses in the old town. On the labyrinthine paths through the charming old town you will get an impression of daily life from the Middle Ages to the present day. Did you know that there are 111 oriels in the old town? The expert guides will also tell of female personalities or of the relationship between Vadian and Paracelsus. And if you are not afraid of heights or climbing stairs, you can also get a view over the roofs of St.Gallen. These and other themed tours are available on request.



St.Gallen's history of beer

Capacity:
up to 30 people
St.Gallen



The juice of the barleycorn also has a tradition stretching back over 1,200 years in the city of St.Gallen. You will have the opportunity to immerse yourself in the world of hops and malted barley, not only with beery facts and figures but also with amusing stores and anecdotes, and by tasting the local brew. Cheers!

Culinary walk around town

Capacity:
up to 200 people
St.Gallen



Would you like to combine culture with culinary delights? Learn about the history of St.Gallen in the course of a carnival ramble, occasionally stopping off at one or more restaurants. Or discover delightful stories about the culinary specialities of the city on a «tasting tour». Under expert guidance, you can dip into the lip-smacking history of the 1400-year-old city of culture and try various delicacies right on the spot. The programme is rounded off by the «Christmas Tasting Tour» with festive delights to tickle the palate.

Foxtrail – play with the city

Capacity:
up to 200 people

St.Gallen



Sightseeing is passé...now it's time for a scavenger hunt! Crack codes. Solve riddles. Sniff out the trail – on land, in the water and all over the place. That's Foxtrail. The most exhilarating way to get to know a city. Thousands of companies, clubs, families and private groups have already hunted the «fox». No team has captured it yet, but everyone had a tremendous amount of fun. Now it's your turn!

Markthalle Altenrhein – Creative workshops

Capacity:
up to 200 people

Altenrhein



Gold-plated onion domes, bright colours, flowing lines, asymmetrical windows, uneven floors, colourful ceramic pillars, shady ambulatories, and roof gardens are the distinctive features of Friedensreich Hundertwasser's architecture. However, there remains much to be done in and around the Market Hall. Use this opportunity for your team to create its own building in Hundertwasser style under expert guidance.



Factory tours in Maestrani's SchoggiLand

Capacity:
up to 50 people

Flawil



Have you always wanted to know how chocolate is made? Where the ingredients come from? What makes Swiss chocolate so special? Share our passion for this sweet temptation. Find out at close quarters how cocoa beans are transformed into exquisite chocolate specialities. Our guides will take you on a journey to discover the origins of our chocolate. On the 80-metre gallery, you can watch with your own eyes how our many and varied creations are produced – and of course you can also try them to your heart's content. We will be happy to air the secrets of Swiss chocolate artistry for you.

Corporate Health: Physically and mentally fit

Capacity:
up to 100 people

Abtwil,
Eastern Switzerland



Experts provide workshops, presentations and events on all matters relating to health. They can show your team how to optimise their personal health, performance and satisfaction in targeted ways. Health and medical checks help people understand their own situation, and individual consultations allow for discussion of specific tips and recommendations for improvement. Your team will also enjoy highlights in the form of presentations by top athletes. A selection of our modules: How to stay healthy and powerful, Stress/burnout, Regeneration is half the battle, Power foods in everyday life, Fitness for the spine, Let's move.

Precious Tasting Tour

Capacity:
up to 100 people
St.Gallen



This tour is the upmarket version of the culinary tasting tour. It links culinary delicacies of the region with St.Gallen's textile-related history in an enticing way. The question is, what has the textile industry to do with culinary delights? It is well known that presentation is just as important as flavour, so even regionally produced, high-quality food tastes significantly better when served up and presented on a carefully laid table and pretty crockery. Hospitality means not only fine food and a fine bottle to go with it, but also a feel for the «how» and «what» when it comes to serving and dishing up.

Embroidery workshop experience

Capacity:
up to 10 people
St.Gallen



Immerse yourself in St.Gallen's world of couture and create your own accessory using St.Gallen embroidery. At the Atelier der Manufaktur workshop, you will be introduced with great enthusiasm to the creativity of sewing and can create your own personal accessory as well. A one-of-a-kind experience for the entire group.



Textilland Eastern Switzerland

Capacity:

up to 50 people

St.Gallen



Textile St.Gallen. A pioneering spirit and world-renowned tradition. Eastern Switzerland is true «textile country», internationally recognised for its textile tradition and special know-how in this sector. «Textilland Eastern Switzerland» (www.textilland.ch) allows you to experience it with its special offers. The founding members of the association – renowned St.Gallen textile companies such as Jakob Schlaepfer and Bischoff Textil AG – offer you the opportunity to take an exclusive inside look at the textile city and region of St.Gallen. Tradition, innovation and exciting, tactile experiences. We can organise fascinating programmes tailored to your exact requirements. Exclusive, once each per year and Textilland company.

Textile reading – A tangible journey through the textile history of eastern Switzerland

Capacity:

up to 100 people

All of eastern Switzerland



Texts from various literary publications on the subject of «eastern Switzerland textiles» are read. For example, from the novel «Die Sticker» by Elisabeth Gerter, «Schürzennäherinnen» by Jolanda Spirig and «Lock-Stoffe» by Monika Kritzmöller. The reader takes on different roles, reading from the perspective of the workers at one point, and then from the viewpoint of the factory owners. This sheds a light on the past and creates a link with the present. The reading comes to life and is as exciting as a mystery novel and as revealing as a biography or a well-polished historical anecdote.

Appenzell village tour

Capacity:
up to 200 people

Appenzell



A tour around town offers a wealth of interesting information not usually found in day-to-day activities. View the colourful houses along main street, the quaint parish church, castle, village square, artwork on Adlerplatz and living traditions. Join us in Switzerland's smallest township! Or choose a tour from our diverse array of offers, including a night watchman tour, a culinary village tour or a tasty town tour.

Tour of Appenzeller Alpenbitter AG

Capacity:
10-60 people

Appenzell



When 20-year-old Emil Ebnetter started his Appenzell liquor shop in 1902, he laid the foundation for today's Appenzeller Alpenbitter AG. Take the tour to gain clues to the secret of Appenzeller Alpenbitter AG. You'll find not only the entire range of Appenzeller Alpenbitter but also a large selection of Swiss and international specialities, including fine spirits, liqueurs and non-alcoholic beverages.



A taste of Appenzell quality of life

Capacity:
up to 50 people
Appenzell



During an exciting tour (with audio player) through the visitor centre of the Locher AG brewery, you will hear many interesting facts about our brewing skills and learn how Appenzeller beer and Sântis malt are made from fresh spring water. A short film shown in the historic hops cellar provides insights into the brewery, and our small museum revives days long gone. Beer tastings are held afterwards in the traditional «Gross-Stöbli» room.

Tour of Appenzell Cheese Dairy

Capacity:
up to 150 people
Stein



see – experience - enjoy: A special experience for the senses, tradition and good company: The Appenzeller show cheese dairy is where the famous, traditional Appenzeller® cheese is produced. Peer over the shoulder of the cheeses from the visitors' gallery, straight into the cheese vat. Experience the show cheese dairy with its impressive cheese cellar, housing up to 12,500 cheeses, on an hour-long guided tour (please book in advance). Then enjoy fine cheese dishes in the cosy, rustic restaurant, as well as regional specialities.

Design your own key fob

Capacity:
up to 20 people
Appenzell



Under expert instruction you can produce your own key fob. A hand-made, useful work of art from Appenzell! In the process, you will learn lots of new and interesting facts about this exciting craft.

Bake an Appenzell «Biber» (gingerbread)

Capacity:
up to 40 people
Heiden, Hundwil,
Waldstatt, Appenzell



Look over the baker's shoulder as Appenzell «Biber» gingerbread is made. Get to know our small region from its sweetest side and bake your own Biber to take home.



Ziträdli – The nostalgic wood-oven bakery

Capacity:

up to 45 people

Teufen



Head baker Chreste and baker's assistant Anneli make their guests feel right at home. The wood-fired oven radiates cosiness. And then... What happens next is a secret, but it certainly will not be boring. Guests tie on aprons and lend a hand themselves in the bakery. A mouth-watering sausage roll is due reward for rolling out the dough. The homemade dessert is the highlight of the evening and a special digestif ends the evening on the right note.

Alpine experience

Capacity:

up to 500 people

Appenzellerland



The lovely Appenzell landscape at your feet and Lake Constance close enough to touch! Immerse yourself in the impressive geography of the Alpstein and discover one of the four Alpstein mountain peaks. The Säntis mountain offers exclusive tours at the summit, the Hoher Kasten tempts you with its modern revolving restaurant and panorama views, the Kronberg mountain thrills young and old alike with its 1000-m-long bobsleigh track, and on the Eben Alp, a visit to the prehistoric Wildkirchli cave is definitely worthwhile. Experience Appenzell's warm hospitality and join us on this journey of discovery.

Cultural Workshop Appenzellerland

Capacity:
up to 60 people

Herisau



Welcome to the cultural workshop Appenzellerland, in the middle of the village Herisau. Immerse yourself in the fascinating world of dulcimer construction, in the diversity of traditions that endured over centuries, the unique jodelling and atmospheric Appenzell folk music. Learn with all your senses a real piece of traditional culture.

Kabier

Capacity:
10–40 people

Stein AR



Kabier cattle receive the finest feed and invigorating massages. The result: contented cows and the best beef. A visit to the Kabier farm is ideal for anyone who is interested in finding out what distinguishes true specialities from run-of-the-mill products. The entire operation is presented during tours. You will learn about the housing, care, feeding and marketing of the cattle and the story behind the concept. Try giving a cow a massage, or help with mucking out or feeding. You can then enjoy a well-earned aperitif along with our products.



Tracking down culture

Capacity:

up to 40 people

Gais AR



Enter the world of traditional folk painting and complete your own work of art as a group. Our exciting quiz including product sampling and a handicraft competition round off the event in style! Enjoy the unique atmosphere in and around our period farmhouse with a spectacular view of the Alpstein massif.

Appenzeller Cup

Capacity:

up to 70 people

Gais AR



All it takes is common sense and coordination. Experience Appenzellerland up close and personal as part of a team. The ideal mix of fun, excitement and camaraderie is sure to please everyone. Enjoy the unique atmosphere in our farmhouse, the lovely view of the Säntis mountain and the team spirit during the different activities. The traditional team competition is a hit with young and old alike and is suitable for both athletic and not-so-athletic participants.

Kronberg exclusive

Capacity:
up to 120 people

Kronberg



In the middle of Appenzellerland, you have the extraordinary opportunity of hiring a mountain exclusively for your event. During the cocktail reception, your participants can take a wild, curvy ride on a bobsled, swing from tree to tree like Tarzan in the rope park, or just relax and watch everyone else. Right on time for dinner, you will take the aerial cable car up the Kronberg, where you can taste typical Appenzeller specialities and enjoy the lovely panorama view at 1663 metres above sea level.

Build a sledge just like in the olden days

Capacity:
up to 20-80 people

Appenzellerland



It's time to get out of the office and head for the mountains. Gonte Kari is overjoyed to welcome you here. His sledge was smashed to smithereens during a breakneck ride down to the valley. Now he is counting on the active help of his lowland guests. Teams will build a sledge out of simple materials just like they used to back in grandfather's time. The team-building activities promote creativity and inventiveness. After well-deserved drinks and finger foods, you will test your «handmade» brand of sledge. Everyone will be able return home with a personal victory to remember. Upon request, you can finish things off with a delicious cheese fondue in the restaurant as you contemplate the evening and its enriching experiences.



Hagerbach testing gallery

Capacity:
up to 500 people

Flums



Experience underground research up close! Tests, research, and development work for underground mining and tunnel safety are carried out in this almost five-km-long gallery system. The unique environment is not only appealing for tours but also lends itself perfectly to conferences, seminars, company events and presentations. The gallery's own restaurant will help you keep up your strength underground.

Gonzen Mine tour

Capacity:
up to 130 people

Sargans



Iron-rich rock was discovered in and on Mount Gonzen as early as 2000 years ago. Up until 1966, iron ore was mined here profitably. This created a labyrinth of galleries and tunnels of up to 90 km in length. A small area of the mine has been open to the public since 1983. Different tours are offered, including a short railway station ride and a two-day tour with a night spent in the mountain itself.

Tamina Gorge

Capacity:

up to 120 people

Bad Ragaz / Pfäfers



Discover the origin of the baths culture in Bad Ragaz and visit the oldest preserved Baroque baths in Switzerland and the thermal springs in a gorge. A wheelchair-accessible path takes you from the «Altes Bad Pfäfers» into the gorge and to the spring, the source of the 36.5° water. The Museum im Alten Bad provides you with interesting information about the baths. The Altes Bad and gorge spring can be toured individually or on a guided tour. A restaurant is available for any hunger pangs. An hour-long walking route leads from Bad Ragaz to the Altes Bad Pfäfers. The route can also be travelled in a horse-drawn carriage or in a post-autobus.

Make your own pasta

Capacity:

up to 45 people

Sargans



The special event for your company, friends or family. Have a look behind the scenes at PASTA PEER and become part of the process. Under expert instruction you can produce your own pasta to take home with you. Then you can enjoy fresh pasta in the cosy Pasta Lounge at Sargan's railway station. Upon request, we can put together a drinks reception, organise a wine-tasting or pamper you with a pasta extravaganza.

Alpine Traditional Cheese Dairy (summer)

Capacity:
on request

Flumserberg

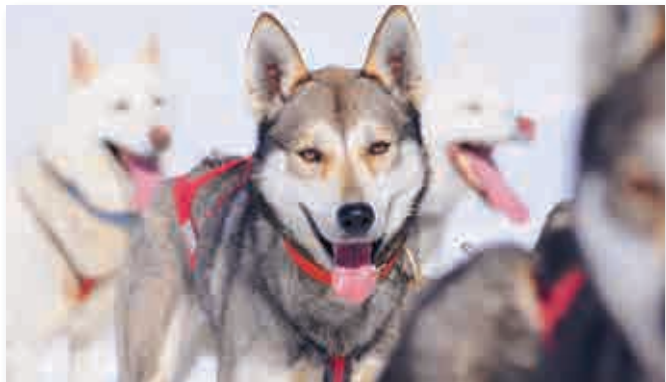


In the traditional cheese dairy, you can make your own cheese during a 2.5-hour programme. Over an open fire, you will experience cheesemaking in its original form in the Tannenboden Alpine Traditional Cheese Dairy, built at the turn of the 19th century. Combine your visit to the Tannenboden Alp with a hearty meal (raclette, fondue, «Älper» macaroni) in the Alprestaurant Sennenstube (on the sunny terrace, weather permitting). In addition to the dishes listed above, there are other delicious options to choose from on the menu.

Husky feeling

Capacity:
up to 60 people

Flumserberg, Toggen-
burg, Schwägalp



An introduction to the world of dog-sledding. With the help of an experienced guide, you will put the harnesses on the huskies and hitch them up before heading out on the trail. Each guest will have the opportunity to guide the sled themselves. To ensure that no one is bored, larger groups are divided into two groups and additional activities are rotated. You can choose from other group activities such as snowshoeing, igloo building, avalanche beacon treasure hunt, etc. Mulled wine cocktails finish off the event.

Wine walk around Walensee

Capacity:
up to 60 people

Walensee



Spoil your friends, employees or customers. Start off gently with coffee and pear bread at the mountain inn, then hike to the glorious banks of the Walensee for a delicious BBQ on the meadow next to the lake, wine tasting at the wine cellar in Quinten, finishing with a boat tour on the Walensee itself. A wonderful experience.

Bike treasure hunt around Walensee

Capacity:
up to 40 people

Walensee



A brief introduction to the rules and then it's off to solve the first challenge: breaking the code to open the bike lock. The next obstacle is the treasure map itself. Decrypting the map will take all your team spirit, ideas, inventiveness and creativity. And away we go! Take a seat on one of these comfortable country bikes! The treasure hunt takes us along the Walensee with its magical views of the Churfirsten mountain range. Who will find the most treasure and still make it back on time...? Following the event, all you thirsty and hungry treasure hunters have the option to enjoy a cocktail or two next to the lake.



Stein am Rhein and Schaffhausen city tours

Capacity:

up to 300 people

Stein am Rhein,
Schaffhausen



Get to know the medieval cities of Stein am Rhein and Schaffhausen with one of our expert tour guides. You will learn exciting facts about the special buildings with their exquisite façade murals, impressive oriel windows and the former, excellently preserved Allerheiligen and St. Georgen monasteries.

Tour of the Rhine Falls

Capacity:

up to 300 people

Neuhausen am Rheinfall,
Dachsen



Learn interesting facts during a Rhine Fall tour about elements that are not obvious at first glance and listen to remarkable stories about the past and present. Choose between a tour along the Rhine Fall basin or through the impressive Laufen Castle. The tours can be combined perfectly with a boat cruise and/or an evening meal in Laufen Castle.

Night watchman tour

Capacity:
up to 50 people

Schaffhausen



After darkness sets in, the «Dark Ages» come alive in Schaffhausen's mediaeval streets. The night watchman takes you along on his rounds and tells you chilling stories of terrible court decisions, of executioners, pestilence, and city fires, as well as all sorts of anecdotes about old Schaffhausen.

Cow trekking – One-of-a-kind experience!

Capacity:
up to 240 people

Hemishofen



Join us on a fabulous 1.5- to 4-hour ride on mild-mannered dairy cows. Explore rambling fields and meadowlands along the Rhine and Biber rivers.

And there's even more to experience at Bolderhof Farm. Make your own soft cheese or take part in a «Rüebliade» – a fun competition with activities all around the organic farm. Complete your trip with a superlative meal from the organic gastronomic kitchen at Bolderhof Farm. Book today.



Cider-making at Feierlenhof

Capacity:

up to 25 people

Altnau



Make your own apple juice in the apple canton. This is possible at Feierlenhof [farm] in Altnau, right here on the Altnauer Apfelweg [apple trail]. Find out more about the world of the apple and juice some apples with the old juicing machine.

Fondue in the forest

Capacity:

up to 40 people

Thurgau



Enjoy fondue in the countryside over an open fire. At every time of year in «almost» every conceivable location. The fondue is prepared directly on site. You will be enchanted by this special occasion, suitable for groups up to 40 people. Enjoy it with friends, colleagues or your family. It is you who determines place and time.

Canoe tours

Capacity:
up to 50 people
(more on request)

Lake Constance



Take to the waterways and discover new areas. Canoeing is an excellent company activity. Employees will get to know each other in an unusual setting and will take many positive memories with them when they return to their normal work situation. All tours are led by experienced and certified guides.

Cruise on Lake Constance or Rhine

Capacity:
unlimited

Bodensee, Rhein,
Untersee



Enjoy the gentle waves of Lake Constance and the tranquil waters of the Rhine. On board, we make sure that you feel comfortable and that you arrive safely at specific locations as well as at sights. Featured villages, medieval towns, monasteries, castles and palaces tell stories about the cultural and historical development of the region. The unspoilt Rhine landscape and the idyllic Untersee offer an impressive natural experience.



partying – The grill party on Lake Constance

Capacity:

up to 10 people
(more on request)

Kreuzlingen, or according
to prior agreement



New for hire on Lake Constance: the ultimate blend of fun, grilling and chilling. A circular grill with space for 10 people around it sits in the middle of the partyring. Equipped with a brilliant sound system, your excursion on the partyring will be a guaranteed success. Attach your own MP3 player and get things rocking. Beverages and various food items can be ordered online when you make your reservation.

Mainau Island

Capacity:

up to 200 people

Lake Constance



With its southern flair, colours, shapes, and fragrances, Mainau offers a new experience every time you visit. Palm and orange trees flourish here, as do other exotic treasures. In spring, there are tulip blossoms as far as the eye can see, and the orchid show attracts visitors to the Palmenhaus. During the summer, there are roses in full bloom; in autumn, dahlias take centre stage. The park's flowerbeds shine with exotic colours from March until October. Mainau Island can be yours every day. It's the perfect place to dream, relax and blossom! Discover the enchantment!

«Klangschmiede» sound-making workshop

Capacity:
up to 30 people

Alt St. Johann



We will take you on a trip through the rich soundscape of the Obertoggenburg. The guided tour starts at the sound smithy. Along with information about the mighty water wheel, you will learn some exciting facts about the forging of bells, meet a melodious set of «Haueis» bells and the magnificently decorated Toggenburg house organ, and be amazed by the fantastic oscillating shapes created by sound in sand and water.

«Klangweg» hiking trail

Capacity:
up to 50 people

Toggenburg



A fence made of metal flutes, a woodpecker that plays the drum at the pull of a cord – on the Toggenburg sound trail you can play these unusual instruments and compose your own tune. The sounds have the optimum effect in the quiet surroundings of the Toggenburg. Together with the sound of bells from the grazing cows and the song of the birds, a harmonious whole is created. An open-air yodelling taster course on the sound trail is the perfect addition to your days walking.



Natural yodelling introductory course

Capacity:

up to 30 people

Toggenburg, Appenzel-
lerland



Enter a unique world of sound with a natural yodelling course in an inspirational setting. Spend several days focussing on natural yodelling, your own voice, the dulcimer, monochord or a different instrument. Experience music firsthand by enrolling in a music course in Toggenburg.

Cheese Academy

Capacity:

up to 20 people

Toggenburg



During a three-hour workshop, participants are introduced to the secrets of cheesemaking. Learn about milk and cheese and enjoy tasting the many cheese varieties. Under the guidance of an expert, participants can produce their own cheeses to take home.

Balik Farm

Capacity:
up to 25 people
Ebersol



For more than 35 years, the famous Balik smoked salmon has been produced here in the heart of the breathtaking foothills of the Alps. Experience truly authentic cuisine combined with a tour through the smokehouse followed by a salmon tasting – fresh from the oven. Or hold your strategy meeting in an enchanting room with an open fireplace. Spend an unforgettable time with your clients in Europe's most extraordinary salmon smokehouse.

Igloo building on a mountain

Capacity:
60-80 people
Toggenburg, Heidiland,
Appenzellerland



This is where Arctic dreams come true. With simple tools, we will help you to build a wind- and weather-proof shelter. When designing your igloo, you can let your imagination run wild. Depending on the snow conditions, a team of five people can build an igloo measuring approx. 3 m in circumference in 4-5 hours. If you wish to, you can also spend the night in your freshly constructed «home».



Snowshoe evening with outdoor fondue feast

Capacity:

20–100 people

Toggenburg,
Appenzellerland and
Heidiland



Far from the beaten track, we tramp softly through the snow on snowshoes, feeling the fresh winter air or the silently dancing snowflakes on our skin and enjoying refreshing hours in the midst of nature. Together, we will cook and enjoy a hearty cheese fondue by torchlight in the wintry landscape of the Toggenburg region.

Curling introductory course

Capacity:

up to 32 people

Wildhaus , St.Gallen,
Uzwil



Curling emphasises important elements of teamwork and requires total concentration from all players, a steady hand and the right touch. Get a taste of curling fever. Wildhaus is the curler's mecca in eastern Switzerland. Beginners can take a two-hour introductory course in the four-rink hall, and experienced players can take part in friendly games.

City-Classic Tour

Capacity:
up to 250 people

Vaduz



Discover the capital of Liechtenstein on foot. The approximately two-hour tour of Vaduz provides thrilling insights and princely views.

On the tour you will also learn interesting things about the form of government under a constitutional, hereditary monarchy, political and economic development and the people of Liechtenstein.

Birds-of-prey show

Capacity:
up to 100 persons

Malbun, Goldingen



The Galina Falconry in Malbun offers unrivalled thrills. At 3 p.m. every day except for Mondays, a professional falconer puts on a unique air show with birds of prey. The majestic hawks and swift falcons shoot into the air and then dive at amazing speeds of up to 150 km/hr right over the audience's heads to return to the falconer's glove. Breathtakingly beautiful. You can also try your hand at being a falconer! Tip: The Eagle Adventure Hike is the only one of its kind in the world (reservation essential).

Citytrain Wingert tour

Capacity:

up to 100 people

Vaduz



During this 60-minute tour through Vaduz, the Citytrain makes a stop at the royal vineyard, where you will learn all about wine-growing. Each guest will be served a glass of Vaduz wine in the palace wine cellar of the prince of Liechtenstein. After enjoying the fine wine, the glass with the original royal crest emblazoned on it can be taken home as a souvenir.

The princes of Liechtenstein

Capacity:

up to 32 people

Vaduz



Learn more about the centuries-old history of the royal family of Liechtenstein on this guided tour of the city of Vaduz. Where did today's Principality of Liechtenstein originate? Where do its roots lie and what role did Napoleon play in the history of the Liechtensteins? In addition, you will tour the national museum with its numerous princely exhibits, including a replica of the «prince's hat», part of the Liechtenstein crown jewels. New opening: Starting in Easter 2015, the «Fürstenhut» will take its place alongside other unique objects and extraordinary exhibits relating to the Principality of Liechtenstein in the new Liechtenstein Treasury.

On the trail of wine and its history

Capacity:

up to 100 people

Eastern Switzerland



Start off on an exciting journey of discovery through the fascinating world of wine. Follow the historic trail of St.Gallen wine with all of your senses. You can choose to explore the history of the vineyards along one of the wine hiking trails or learn more about winemaking then and now during a tour of the vineyards and wine cellar. Watch while a cooper or glassblower shows you their handicraft. Discover the top quality and wide assortment of St.Gallen wines during a relaxing tasting. Upon request, an impressive wine bus will take you to the heart of St.Gallen's wine country. You can also choose a similar offer for topics such as spirits, apples and cider, cheeses and oils.

Cooking – Creative workshops

Capacity:

up to 30 people

Eastern Switzerland



Leave your desk for once and spend an evening in the kitchen with your team. Watch your boss as he tries to cook or be amazed by how an intern can julienne carrots perfectly. Of course, many items will be prepared in advance and the cooking time will fly by with help from the event leader. Then it will be time to enjoy the different dishes while relaxing and conversing. Get to know a different side of your colleagues, guests or clients, and experience the motivation and group dynamic created by an unusual round of cooking.

Dragon boat

Capacity:

up to 1000 people

Eastern Switzerland



Would you like to improve the togetherness of your team and foster a sense «all in the same boat»? Dragon boating is a group-dynamic experience and both an active and an innovative entertainment. You are involved from the beginning, you support the dragonboatevents.ch team to macerate the boats and you are inaugurated by professionals in the secrets of the paddling technique. You will learn about the many legends that have grown up around the origins of dragon boating. The roots of this Asian sport go back into the year 400 B.C.

helldriver

Capacity:

up to 20 – 200 people

indoor and outdoor possible



When the starting pistol sounds, the engine starts to roar and the speed rush sets in, you can be sure «helldriver» has really begun. In small groups, you will race after the remote-controlled bolides on the mobile racetrack with electronic lap counting. Luckily, even the most spectacular accidents are completely painless here. The game show combines competition, fun and sophisticated animation on a professional level. After the final lap, there's champagne for the winner, of course. Option 1: Comedy moderation as a race steward, Option 2: Design your own car, Option 3: Paint your car with your corporate design, Option 4: Manoeuvrability exercises for team events

Chain-reaction workshop

Capacity:

20 – 2000 people

Indoors and outdoors

Possible all over
Switzerland



Awaken the inventor in you! Participants form into small groups and build a component of the larger chain reaction. First comes imagination, planning and tinkering. There is an enormous amount of all kinds of materials available for the construction phase. All of the participants must work hand in hand for the chain reaction to succeed. Communication is key. Only by talking things out will you ultimately find success. After the construction and test phases, everything is ready. The first group starts the chain reaction to the sound of thunderous applause. The excitement is palpable. Will it actually work? As the chain reaction nears the grand finale, the relief and joy are shared by all.

Rope parks

Capacity:

up to 100 people

St.Gallen, Jakobsbad,
Schaffhausen, Flumser-
berge and Triesen FL



Balance, soar, climb or leap through the treetops. Various courses with differing degrees of difficulty and many diverse activities await you at the rope parks in Eastern Switzerland and the Principality of Liechtenstein. From a safe beginner's course near the ground to tricky challenges at a height of 27 metres, there is something for everyone to enjoy. You will be given challenges during the team course and your team must work together to find a common solution. After a challenge has been solved, time is taken for a short reflective pause to understand the experiences cognitively and apply them from a professional perspective. Be brave and test your limits!

TOPAZ Outdoortrainings

Capacity:

up to 8 - 20 people

Eastern Switzerland



Your team takes centre stage during TOPAZ outdoor training sessions. Depending on the situation, personal development using methods from the outdoor adventure sector can be focussed on team or personality development, for example. The goal of the training is to equip participants with the tools they need to be more successful in the long term. They learn how to optimise cooperation, pool resources, improve communication and thus increase productivity. Nature serves as the perfect training ground and the coach creates the ideal setting for development. The knowledge and skills gained from the exercises will be applied in a very short time.

Atzmännig

Kapazität:

unlimited

Goldingen



Incentive offer - everything at first hand

We are your contact, organiser and supervisor in one. «Everything at first hand» is our magic word. We take care of everything, so you can enjoy a light-hearted day. Whether you are looking for the rope park adventure, for a ride on the toboggan run, an exclusively night ride on our ski trail, for a husky trekking in winter, for carving sculptures or performing team trophies and finish all with a culinary offer according to your wishes – we will not say «no». Try it out - we look forward to meeting you!

Discovery tours

Capacity:

up to 10 - 200 people

St.Gallen, Appenzell,
Stein AR, Säntis, Walzen-
hausen, Speicher



Discover the cultural treasures, artistic oriel windows and historic old town of the city of St.Gallen or the living traditions, colourful houses of the village of Appenzell, and Appenzell cheeses. During an exciting search for clues through the narrow streets, you will solve mysteries and search out hidden nooks. You will also be tested with team tasks and riddles. A sense of orientation and team-thinking take top priority in these games, while speed and mobility are less important. After finding all the answers, you can enjoy aperitifs or a meal together. The best detectives will be properly honoured, of course.

Mystery in the Old Town

Capacity:

up to 50 people

All of eastern Switzerland



Gianni Milanese, a stone sculptor and artist well known in the city, was found lifeless on a bench near the old-age home yesterday morning at 8.00 by a jogger out for his morning run. The exact cause of death is still unclear and Inspector Gübeli is completely flummoxed. Throughout a three-course mystery dinner, the amateur sleuths will work with the inspector to solve the case and find the murderer amongst their own ranks. The excitement begins even before the event starts, as eight people from the group are given a role to play and thus have time to prepare their characters beforehand. What happened? Who has a motive?

Swiss Casinos St.Gallen/Schaffhausen

Capacity:
up to 150 people

St.Gallen, Schaffhausen



Leave the daily routine behind and enjoy an extraordinary gambling experience in a distinctive atmosphere. Thrilling table games, a multitude of slot machines as well as a cosy bar ensure plenty of entertainment. For your special occasion, we offer various packages of casino tours, exclusive gambling lessons and your own private reception. We will transform your event into a unique and unforgettable experience.

Onewheel Tour

Capacity:
up to 8 people

Eastern Switzerland



Onewheel Tours in Eastern Switzerland – limitless electrically propelled fun on one wheel. Have you always wanted to try surfing through Eastern Switzerland and experience this incredible carving and floating sensation? The Onewheel is electrically propelled and is ridden by merely shifting your weight. Thanks to its wide tyre, it can be easily ridden after around 10 minutes practice and we are then ready for a one- or two-hour tour.

Der *Alltag* kann warten.



SWISS CASINOS
St. Gallen



Need more inspiration?

Just visit our new platform:

www.st.gallen-convention.ch

Fresh ideas, surprising offers, daily updates. For congresses. For meetings. For events. For social activities.

For your event.



St.GallenBodensee
explore enjoy learn

St.Gallen-Bodensee Convention

Bankgasse 9

CH-9001 St.Gallen

Tel. +41 (0)71 227 37 32

Fax +41 (0)71 227 37 67

congress@st.gallen-bodensee.ch

www.st.gallen-convention.ch

ostschweiz.ch



UND FÜRSTENTUM LIECHTENSTEIN

Switzerland.
meeting excellence.



Vier Länder. Ein Eventpartner.